

Product datasheet

Anti-DIMT1L antibody ab71302

画像数 1

製品の概要

製品名	Anti-DIMT1L antibody
製品の詳細	Rabbit polyclonal to DIMT1L
由来種	Rabbit
アプリケーション	適用あり: ELISA, WB
種交差性	交差種: Human
免疫原	Synthetic peptide (Human) from the C terminus conjugated to KLH
ポジティブ・コントロール	T47D cell lysate

製品の特性

製品の状態	Liquid
保存方法	Shipped at 4°C. Upon delivery aliquot and store at -20°C or -80°C. Avoid repeated freeze / thaw cycles.
バッファー	Preservative: 0.09% Sodium Azide Constituents: PBS
精製度	Protein G purified
特記事項 (精製)	This antibody is purified through a protein G column, eluted with high and low pH buffers and neutralized immediately, followed by dialysis against PBS.
ポリ/モノ	ポリクローナル
アイソタイプ	IgG

アプリケーション

Our [Abpromise guarantee](#) covers the use of **ab71302** in the following tested applications.

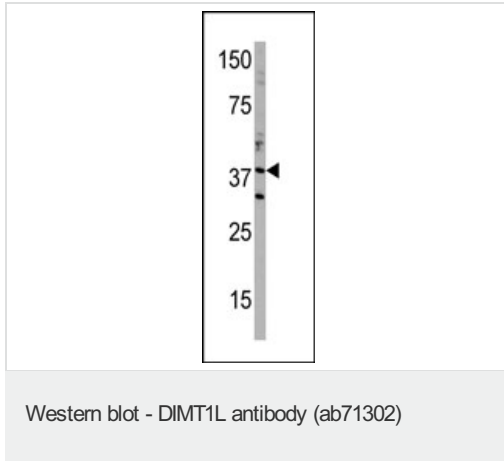
The application notes include recommended starting dilutions; optimal dilutions/concentrations should be determined by the end user.

アプリケーション	Abreviews	特記事項
ELISA		1/1000.
WB		1/100 - 1/500. Detects a band of approximately 38 kDa (predicted molecular weight: 36 kDa).

ターゲット情報

機能	Specifically dimethylates two adjacent adenosines in the loop of a conserved hairpin near the 3'-end of 18S rRNA in the 40S particle.
配列類似性	Belongs to the methyltransferase superfamily. rRNA adenine N(6)-methyltransferase family.
細胞内局在	Nucleus > nucleolus.

画像



Anti-DIMIT1L antibody (ab71302) at 1/60 dilution + T47D cell lysate at 35 µg

Predicted band size: 36 kDa

Observed band size: 32 kDa

Additional bands at: 35 kDa. We are unsure as to the identity of these extra bands.

Please note: All products are "FOR RESEARCH USE ONLY AND ARE NOT INTENDED FOR DIAGNOSTIC OR THERAPEUTIC USE"

Our Abpromise to you: Quality guaranteed and expert technical support

- Replacement or refund for products not performing as stated on the datasheet
- Valid for 12 months from date of delivery
- Response to your inquiry within 24 hours
- We provide support in Chinese, English, French, German, Japanese and Spanish
- Extensive multi-media technical resources to help you
- We investigate all quality concerns to ensure our products perform to the highest standards

If the product does not perform as described on this datasheet, we will offer a refund or replacement. For full details of the Abpromise, please visit <http://www.abcam.co.jp/abpromise> or contact our technical team.

Terms and conditions

- Guarantee only valid for products bought direct from Abcam or one of our authorized distributors