



Product datasheet

Anti-Eco1 antibody ab70442

画像数 1

製品の概要

製品名	Anti-Eco1 antibody
製品の詳細	Mouse polyclonal to Eco1
由来種	Mouse
特異性	This antibody is reactive against mammalian transfected lysate.
アプリケーション	適用あり: WB
免疫原	Recombinant fragment corresponding to Human Eco1 aa 669-840 (C terminal). Sequence: MVLPEDPKYALKKVVDEIREMVDNDLGFQQAPLMCYSRTKTLLEISNDKKV VGCLIAEHIQWGYRVIEEKLPVIRSEEEKVRFERQKAWCCSTLPEPAICG ISRIWVFSMMRRKKIASRMIECLRSNFIYGSYLSKEEIAFSDPTPDGKLF ATQYCGTGQFLVYNFINGQNST Database link: Q5FWF5 <div style="display: flex; justify-content: flex-end; gap: 20px;">  Run BLAST with  Run BLAST with </div>
ポジティブ・コントロール	Transfected 293T cell lysate.

製品の特性

製品の状態	Liquid
保存方法	Shipped at 4°C. Upon delivery aliquot and store at -20°C or -80°C. Avoid repeated freeze / thaw cycles.
バッファー	Preservative: None Constituents: 1X PBS, pH 7.2
精製度	Protein G purified
ポリ/モノ	ポリクローナル
アイソタイプ	IgG

アプリケーション

Our [Abpromise guarantee](#) covers the use of **ab70442** in the following tested applications.

The application notes include recommended starting dilutions; optimal dilutions/concentrations should be determined by the end user.

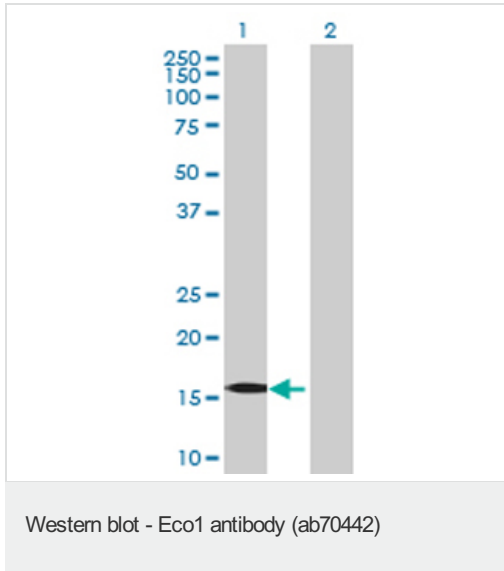
アプリケーション	Abreviews	特記事項
----------	-----------	------

WB 1/500 - 1/1000. Detects a band of approximately 16 kDa (predicted molecular weight: 95 kDa).
The actual band size corresponds to the size of the immunizing protein fragment which was transfected into lysate. We do not yet have data to indicate that the antibody will work in endogenously expressed samples.

ターゲット情報

機能	Acetyltransferase required for the establishment of sister chromatid cohesion and couple the processes of cohesion and DNA replication to ensure that only sister chromatids become paired together. In contrast to the structural cohesins, the deposition and establishment factors are required only during S phase. Acts by mediating the acetylation of cohesin component SMC3.
組織特異性	Widely expressed. Expressed in heart, brain, liver, placenta, lung, kidney and pancreas. Highly expressed in muscle.
配列類似性	Belongs to the acetyltransferase family. GCN5 subfamily.
ドメイン	The N-terminal region seems to be responsible for the association with chromosomes, thus excluding any involvement of the Zn finger in this process.
翻訳後修飾	Phosphorylated during mitosis. Phosphorylated upon DNA damage, probably by ATM or ATR.
細胞内局在	Nucleus. Chromosome. Nuclear at interphase, associated with chromosomes during mitosis.

画像



All lanes : Anti-Eco1 antibody (ab70442) at 1/500 dilution

Lane 1 : Eco1 transfected 293T cell lysate

Lane 2 : Non-transfected 293T cell lysate

Lysates/proteins at 25 µg/ml per lane.

Secondary

All lanes : Goat Anti-Mouse IgG (H&L)-HRP

Conjugate at 1/2500 dilution

Predicted band size: 95 kDa

Observed band size: 16 kDa

Actual band size corresponds to the size of the transfected immunizing protein fragment.

Please note: All products are "FOR RESEARCH USE ONLY AND ARE NOT INTENDED FOR DIAGNOSTIC OR THERAPEUTIC USE"

Our Abpromise to you: Quality guaranteed and expert technical support

- Replacement or refund for products not performing as stated on the datasheet
- Valid for 12 months from date of delivery
- Response to your inquiry within 24 hours
- We provide support in Chinese, English, French, German, Japanese and Spanish
- Extensive multi-media technical resources to help you
- We investigate all quality concerns to ensure our products perform to the highest standards

If the product does not perform as described on this datasheet, we will offer a refund or replacement. For full details of the Abpromise, please visit <http://www.abcam.co.jp/abpromise> or contact our technical team.

Terms and conditions

- Guarantee only valid for products bought direct from Abcam or one of our authorized distributors