

Product datasheet

Anti-AP1M2 antibody ab70143

画像数 1

製品の概要

製品名	Anti-AP1M2 antibody
製品の詳細	Mouse polyclonal to AP1M2
由来種	Mouse
アプリケーション	適用あり: WB
種交差性	交差種: Human
免疫原	AP1M2 (NP_005489, 423 a.a), full-length human protein.
ポジティブ・コントロール	AP1M2 transfected 293T cell lysate

製品の特性

製品の状態	Liquid
保存方法	Shipped at 4°C. Upon delivery aliquot and store at -20°C or -80°C. Avoid repeated freeze / thaw cycles.
バッファー	Preservative: None Constituents: 1X PBS, pH 7.2
精製度	Protein G purified
ポリ/モノ	ポリクローナル
アイソタイプ	IgG

アプリケーション

Our [Abpromise guarantee](#) covers the use of **ab70143** in the following tested applications.

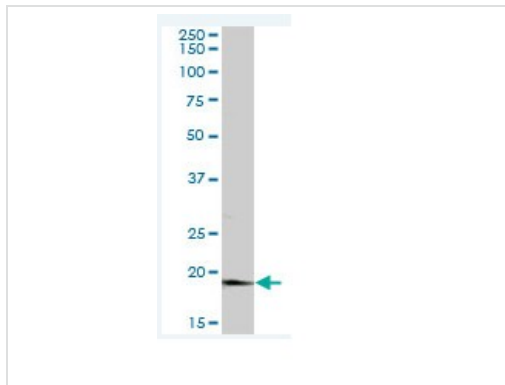
The application notes include recommended starting dilutions; optimal dilutions/concentrations should be determined by the end user.

アプリケーション	Abreviews	特記事項
WB		1/500 - 1/1000. Detects a band of approximately 48 kDa (predicted molecular weight: 48 kDa).

ターゲット情報

機能	Subunit of clathrin-associated adaptor protein complex 1 that plays a role in protein sorting in the trans-Golgi network (TGN) and endosomes. The AP complexes mediate the recruitment of clathrin to membranes and the recognition of sorting signals within the cytosolic tails of transmembrane cargo molecules.
配列類似性	Belongs to the adaptor complexes medium subunit family. Contains 1 MHD (mu homology) domain.
翻訳後修飾	Phosphorylation of membrane-bound AP1M1/AP1M2 increases its affinity for sorting signals.
細胞内局在	Golgi apparatus. Cytoplasmic vesicle > clathrin-coated vesicle membrane. Component of the coat surrounding the cytoplasmic face of coated vesicles located at the Golgi complex.

画像



Western blot - AP1M2 antibody (ab70143)

All lanes : Anti-AP1M2 antibody (ab70143) at 1/500 dilution

Lane 1 : AP1M2 transfected 293T cell lysate

Lane 2 : non transfected 293T cell lysate

Lysates/proteins at 25 µg per lane.

Secondary

All lanes : Goat Anti-Mouse IgG (H&L)-HRP

Conjugate at 1/2500 dilution

Predicted band size: 48 kDa

Observed band size: 48 kDa

Please note: All products are "FOR RESEARCH USE ONLY AND ARE NOT INTENDED FOR DIAGNOSTIC OR THERAPEUTIC USE"

Our Abpromise to you: Quality guaranteed and expert technical support

- Replacement or refund for products not performing as stated on the datasheet
- Valid for 12 months from date of delivery
- Response to your inquiry within 24 hours
- We provide support in Chinese, English, French, German, Japanese and Spanish
- Extensive multi-media technical resources to help you
- We investigate all quality concerns to ensure our products perform to the highest standards

If the product does not perform as described on this datasheet, we will offer a refund or replacement. For full details of the Abpromise, please visit <http://www.abcam.co.jp/abpromise> or contact our technical team.

Terms and conditions

- Guarantee only valid for products bought direct from Abcam or one of our authorized distributors