


## Product datasheet

# Anti-PHKA1 antibody ab70068

### 画像数 2

#### 製品の概要

製品名	Anti-PHKA1 antibody
製品の詳細	Rabbit polyclonal to PHKA1
由来種	Rabbit
特異性	ab70068 detects endogenous levels of total PHKA1 protein.
アプリケーション	適用あり: WB, ELISA, ICC/IF
種交差性	交差種: Human 交差が予測される動物種: Mouse, Rat 
免疫原	Synthetic peptide derived from an internal sequence of PHKA1
ポジティブ・コントロール	HeLa cells and extracts from Jurkat and COLO205 cells.

#### 製品の特性

製品の状態	Liquid
保存方法	Shipped at 4°C. Upon delivery aliquot and store at -20°C. Avoid freeze / thaw cycles.
バッファー	Preservative: 0.02% Sodium Azide Constituents: 50% Glycerol, PBS (without Mg <sup>2+</sup> and Ca <sup>2+</sup> ), 150mM Sodium chloride, pH 7.4
精製度	Immunogen affinity purified
特記事項 (精製)	ab70068 was affinity-purified from rabbit antiserum by affinity-chromatography using epitope-specific immunogen.
ポリ/モノ	ポリクローナル
アイソタイプ	IgG

#### アプリケーション

Our [Abpromise guarantee](#) covers the use of **ab70068** in the following tested applications.

The application notes include recommended starting dilutions; optimal dilutions/concentrations should be determined by the end user.

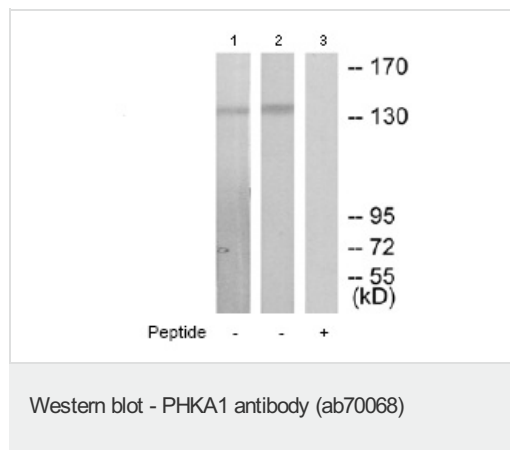
アプリケーション	Abreviews	特記事項
WB		1/500 - 1/1000. Detects a band of approximately 138 kDa (predicted molecular weight: 138 kDa).

アプリケーション	Abreviews	特記事項
ELISA		1/20000.
ICC/IF		1/500 - 1/1000.

## ターゲット情報

機能	Phosphorylase b kinase catalyzes the phosphorylation of serine in certain substrates, including troponin I. The alpha chain may bind calmodulin.
組織特異性	Muscle specific. Isoform 1 is predominant in vastus lateralis muscle. Isoform 2 predominates slightly in heart, and it predominates clearly in the other tissues tested.
パスウェイ	Glycan biosynthesis; glycogen metabolism.
関連疾患	Glycogen storage disease 9D (GSD9D) [MIM:300559]: A metabolic disorder characterized by slowly progressive, predominantly distal muscle weakness and atrophy. Clinical features include exercise intolerance with early fatigability, pain, cramps and occasionally myoglobinuria. Note=The disease is caused by mutations affecting the gene represented in this entry.
配列類似性	Belongs to the phosphorylase b kinase regulatory chain family.
翻訳後修飾	Although the final Cys may be farnesylated, the terminal tripeptide is probably not removed, and the C-terminus is not methylated.
細胞内局在	Cell membrane.

## 画像



**All lanes** : Anti-PHKA1 antibody (ab70068) at 1/500 dilution

**Lane 1** : Jurkat cell extracts

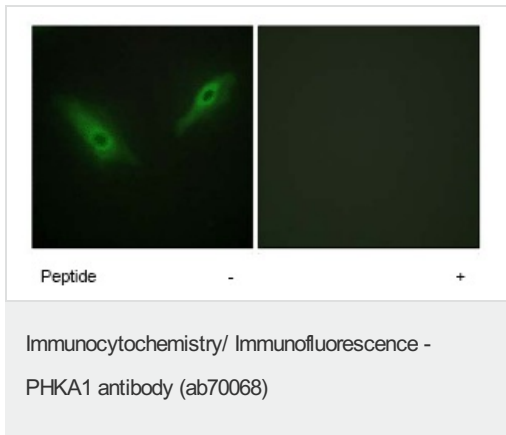
**Lane 2** : COLO205 cell extracts

**Lane 3** : Jurkat cell extracts with immunising peptide at 10 µg

Lysates/proteins at 30 µg per lane.

**Predicted band size:** 138 kDa

**Observed band size:** 138 kDa



ab70068 at 1/500 dilution staining PHKA1 in HeLa cells by Immunofluorescence, in the absence or presence of the immunising peptide.

**Please note:** All products are "FOR RESEARCH USE ONLY AND ARE NOT INTENDED FOR DIAGNOSTIC OR THERAPEUTIC USE"

### Our Abpromise to you: Quality guaranteed and expert technical support

- Replacement or refund for products not performing as stated on the datasheet
- Valid for 12 months from date of delivery
- Response to your inquiry within 24 hours
- We provide support in Chinese, English, French, German, Japanese and Spanish
- Extensive multi-media technical resources to help you
- We investigate all quality concerns to ensure our products perform to the highest standards

If the product does not perform as described on this datasheet, we will offer a refund or replacement. For full details of the Abpromise, please visit <http://www.abcam.co.jp/abpromise> or contact our technical team.

### Terms and conditions

- Guarantee only valid for products bought direct from Abcam or one of our authorized distributors