

## Product datasheet

# Anti-Cystatin D antibody ab69706

### 画像数 1

#### 製品の概要

製品名	Anti-Cystatin D antibody
製品の詳細	Mouse polyclonal to Cystatin D
由来種	Mouse
アプリケーション	適用あり: WB
種交差性	交差種: Human
免疫原	Full length human Cystatin D protein (NP_001891.2).
ポジティブ・コントロール	Cystatin D transfected 293T cell lysate.

#### 製品の特性

製品の状態	Liquid
保存方法	Shipped at 4°C. Upon delivery aliquot and store at -20°C or -80°C. Avoid repeated freeze / thaw cycles.
バッファー	Preservative: None Constituents: 1X PBS, pH 7.2
精製度	Protein G purified
ポリ/モノ	ポリクローナル
アイソタイプ	IgG

#### アプリケーション

Our [Abpromise guarantee](#) covers the use of **ab69706** in the following tested applications.

The application notes include recommended starting dilutions; optimal dilutions/concentrations should be determined by the end user.

アプリケーション	Abreviews	特記事項
----------	-----------	------

WB

#### 追加情報

WB: 1/500 - 1/1000. Detects a band of <10 kDa (predicted molecular weight: 16 kDa).

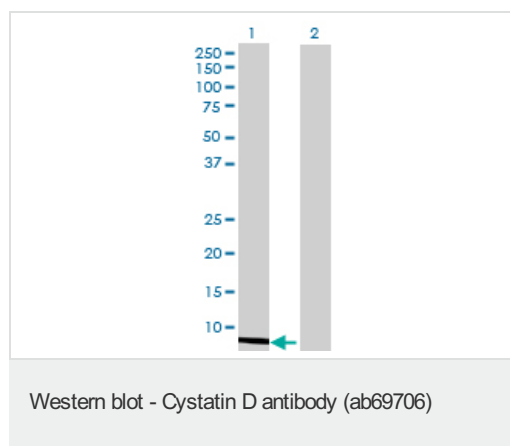
Not yet tested in other applications.

Optimal dilutions/concentrations should be determined by the end user.

## ターゲット情報

機能	Cysteine proteinase inhibitor that possibly plays a protective role against proteinases present in the oral cavity. The order of preference for inhibition is cathepsin S > cathepsin H > cathepsin L > cathepsin B.
組織特異性	Expressed in submandibular and sublingual saliva but not in parotid saliva (at protein level). Expressed in parotid gland but not in seminal vesicle, prostate, epididymis, testis, ovary, placenta, thyroid, gastric corpus, small intestine, liver, or gall bladder tissue.
配列類似性	Belongs to the cystatin family.
細胞内局在	Secreted.

## 画像



**All lanes** : Anti-Cystatin D antibody (ab69706) at 1/500 dilution

**Lane 1** : Cystatin D transfected 293T cell lysate

**Lane 2** : Non-transfected 293T cell lysate

Lysates/proteins at 25 µg per lane.

### Secondary

**All lanes** : Goat Anti-Mouse IgG (H&L)-HRP Conjugate at 1/2500 dilution

**Predicted band size:** 16 kDa

**Observed band size:** <10 kDa

**Please note:** All products are "FOR RESEARCH USE ONLY AND ARE NOT INTENDED FOR DIAGNOSTIC OR THERAPEUTIC USE"

## Our Abpromise to you: Quality guaranteed and expert technical support

- Replacement or refund for products not performing as stated on the datasheet
- Valid for 12 months from date of delivery
- Response to your inquiry within 24 hours
- We provide support in Chinese, English, French, German, Japanese and Spanish
- Extensive multi-media technical resources to help you
- We investigate all quality concerns to ensure our products perform to the highest standards

If the product does not perform as described on this datasheet, we will offer a refund or replacement. For full details of the Abpromise, please visit <http://www.abcam.co.jp/abpromise> or contact our technical team.

## Terms and conditions

---

- Guarantee only valid for products bought direct from Abcam or one of our authorized distributors