

## Product datasheet

# Anti-TEM7 antibody ab68354

### 画像数 2

#### 製品の概要

製品名	Anti-TEM7 antibody
製品の詳細	Mouse monoclonal to TEM7
由来種	Mouse
アプリケーション	<b>適用あり:</b> WB, ELISA
種交差性	<b>交差種:</b> Human
免疫原	Recombinant fragment, corresponding to amino acids 313-422 of Human TEM7, with a tag. MW of the tag alone is 26kDa.
ポジティブ・コントロール	Transfected 293T cell lysate

#### 製品の特性

製品の状態	Liquid
保存方法	Shipped at 4°C. Upon delivery aliquot and store at -20°C or -80°C. Avoid repeated freeze / thaw cycles.
バッファー	Preservative: None Constituents: 1X PBS, pH 7.2
精製度	Protein A purified
ポリ/モノ	モノクローナル
アイソタイプ	IgG2b
軽鎖の種類	kappa

#### アプリケーション

Our [Abpromise guarantee](#) covers the use of **ab68354** in the following tested applications.

The application notes include recommended starting dilutions; optimal dilutions/concentrations should be determined by the end user.

アプリケーション	Abreviews	特記事項
WB		
ELISA		

## 追加情報

Sandwich ELISA and ELISA: Use at a concentration of 10 µg/ml.

WB: 1/500. Detects a band of approximately 75 kDa (predicted molecular weight: 56 kDa).

Not yet tested in other applications.

Optimal dilutions/concentrations should be determined by the end user.

## ターゲット情報

### 機能

Plays a critical role in endothelial cell capillary morphogenesis.

### 組織特異性

Detected in endothelial cells from colorectal cancer, and in endothelial cells from primary cancers of the lung, liver, pancreas, breast and brain. Not detectable in endothelial cells from normal tissue. Expressed in fibrovascular membrane with increased expression in individuals with proliferative diabetic retinopathy.

### 配列類似性

Belongs to the plexin family.

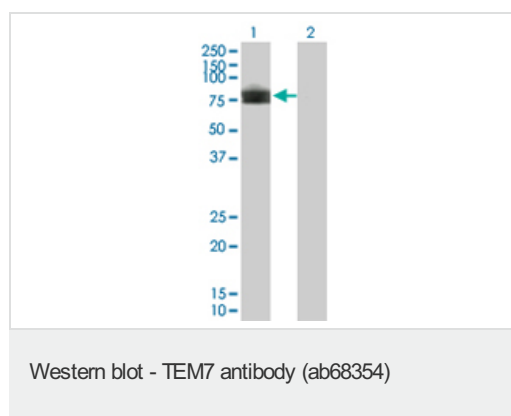
### 翻訳後修飾

N-glycosylated.

### 細胞内局在

Cytoplasm; Secreted and Cell membrane. Cell junction > tight junction. Localized predominantly at the tight junctions of vascular endothelial cells and to a lesser extent at the luminal surface of vascular endothelial cells.

## 画像



**All lanes** : Anti-TEM7 antibody (ab68354) at 1/500 dilution

**Lane 1** : TEM7 transfected 293T cell lysate

**Lane 2** : Non-transfected 293T cell lysate

Lysates/proteins at 25 µg per lane.

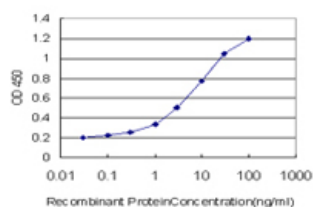
### Secondary

**All lanes** : Goat Anti-Mouse IgG (H&L)-HRP

Conjugate at 1/2500 dilution

**Predicted band size:** 56 kDa

**Observed band size:** 75 kDa



ELISA - TEM7 antibody (ab68354)

ab68354 at 10 $\mu$ g/ml in Sandwich ELISA.

Detection limit for ab68354 is approximately 0.03ng/ml as a capture antibody.

**Please note:** All products are "FOR RESEARCH USE ONLY AND ARE NOT INTENDED FOR DIAGNOSTIC OR THERAPEUTIC USE"

### Our Abpromise to you: Quality guaranteed and expert technical support

- Replacement or refund for products not performing as stated on the datasheet
- Valid for 12 months from date of delivery
- Response to your inquiry within 24 hours
- We provide support in Chinese, English, French, German, Japanese and Spanish
- Extensive multi-media technical resources to help you
- We investigate all quality concerns to ensure our products perform to the highest standards

If the product does not perform as described on this datasheet, we will offer a refund or replacement. For full details of the Abpromise, please visit <http://www.abcam.co.jp/abpromise> or contact our technical team.

### Terms and conditions

- Guarantee only valid for products bought direct from Abcam or one of our authorized distributors