

## Product datasheet

# Anti-SASS6 antibody ab67395

1 Abreviews [画像数 1](#)

### 製品の概要

製品名	Anti-SASS6 antibody
製品の詳細	Mouse polyclonal to SASS6
由来種	Mouse
アプリケーション	<b>適用あり:</b> WB
種交差性	<b>交差種:</b> Human
免疫原	Full length human SASS6 protein (AAI01027.1, 1 a.a. ~ 490 a.a)
ポジティブ・コントロール	SASS6 transfected 293T cell lysate.

### 製品の特性

製品の状態	Liquid
保存方法	Shipped at 4°C. Upon delivery aliquot and store at -20°C or -80°C. Avoid repeated freeze / thaw cycles.
バッファー	Preservative: None Constituents: 1X PBS, pH 7.2
精製度	Protein G purified
ポリ/モノ	ポリクローナル
アイソタイプ	IgG

### アプリケーション

Our [Abpromise guarantee](#) covers the use of **ab67395** in the following tested applications.

The application notes include recommended starting dilutions; optimal dilutions/concentrations should be determined by the end user.

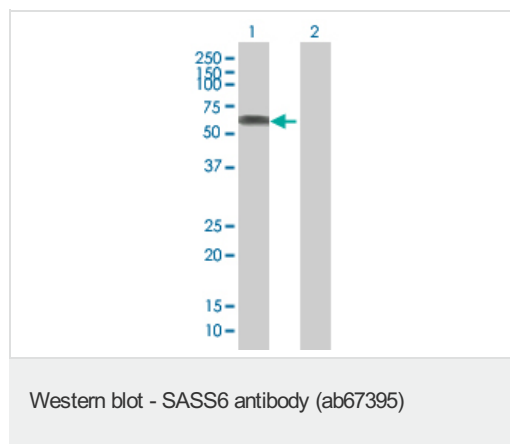
アプリケーション	Abreviews	特記事項
WB		1/500 - 1/1000. Detects a band of approximately 60 kDa (predicted molecular weight: 74 kDa).

### ターゲット情報

**関連性** SASS6 (Spindle assembly abnormal protein 6 homolog) is required for centrosome duplication. It functions to ensure that each centriole seeds the formation of a single procentriole per cell cycle. Overexpression results in excess foci bearing centriolar markers.

**細胞内局在** Cytoplasm; cytoskeleton; centrosome. Cytoplasm; cytoskeleton; centrosome; centriole. Note: Component of the centrosome. Associated only transiently with nascent procentrioles during centriole biogenesis.

## 画像



**All lanes** : Anti-SASS6 antibody (ab67395) at 1/500 dilution

**Lane 1** : SASS6 transfected 293T cell lysate

**Lane 2** : Non-transfected 293T cell lysate

Lysates/proteins at 25 µg per lane.

### Secondary

**All lanes** : Goat Anti-Mouse IgG (H&L)-HRP Conjugate at 1/2500 dilution

**Predicted band size:** 74 kDa

**Observed band size:** 60 kDa

**Please note:** All products are "FOR RESEARCH USE ONLY AND ARE NOT INTENDED FOR DIAGNOSTIC OR THERAPEUTIC USE"

## Our Abpromise to you: Quality guaranteed and expert technical support

- Replacement or refund for products not performing as stated on the datasheet
- Valid for 12 months from date of delivery
- Response to your inquiry within 24 hours
- We provide support in Chinese, English, French, German, Japanese and Spanish
- Extensive multi-media technical resources to help you
- We investigate all quality concerns to ensure our products perform to the highest standards

If the product does not perform as described on this datasheet, we will offer a refund or replacement. For full details of the Abpromise, please visit <http://www.abcam.co.jp/abpromise> or contact our technical team.

## Terms and conditions

- Guarantee only valid for products bought direct from Abcam or one of our authorized distributors