

Product datasheet

Anti-MRPL1 antibody ab67245

画像数 2

製品の概要

製品名	Anti-MRPL1 antibody
製品の詳細	Mouse polyclonal to MRPL1
由来種	Mouse
アプリケーション	適用あり: WB, ICC/IF
種交差性	交差種: Human
免疫原	Full length MRPL1 protein (Human)
ポジティブ・コントロール	Hela cells and MRPL1 transfected 293T cell lysate

製品の特性

製品の状態	Liquid
保存方法	Shipped at 4°C. Upon delivery aliquot and store at -20°C or -80°C. Avoid repeated freeze / thaw cycles.
バッファー	Preservative: None Constituents: PBS, pH 7.2
精製度	Protein A purified
ポリ/モノ	ポリクローナル
アイソタイプ	IgG

アプリケーション

Our [Abpromise guarantee](#) covers the use of **ab67245** in the following tested applications.

The application notes include recommended starting dilutions; optimal dilutions/concentrations should be determined by the end user.

アプリケーション	Abreviews	特記事項
WB		
ICC/IF		

追加情報

ICC/IF: Use at a concentration of 10 µg/ml.
WB: 1/500 - 1/1000. Detects a band of approximately 34 kDa (predicted molecular weight: 34

kDa).
Detection Antibody Pair.

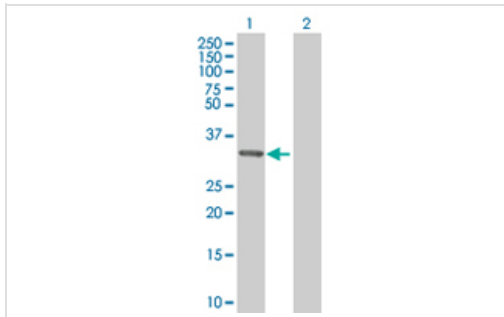
NOTE: Product requires purification with Protein A prior to use in ICC/IF.

Not yet tested in other applications.
Optimal dilutions/concentrations should be determined by the end user.

ターゲット情報

配列類似性 Belongs to the ribosomal protein L1P family.
細胞内局在 Mitochondrion.

画像



Western blot - MRPL1 antibody (ab67245)

All lanes : Anti-MRPL1 antibody (ab67245) at 1/500 dilution

Lane 1 : MRPL1 transfected 293T cell lysate

Lane 2 : Non-transfected 293T cell lysate

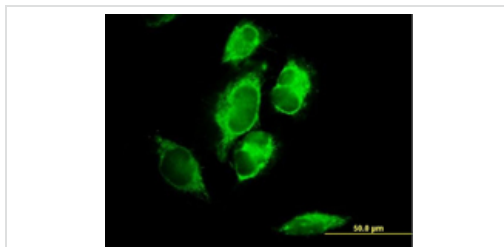
Lysates/proteins at 25 µg/ml per lane.

Secondary

All lanes : Goat Anti-Mouse IgG (H&L)-HRP Conjugate at 1/2500 dilution

Predicted band size: 34 kDa

Observed band size: 34 kDa



Immunocytochemistry/ Immunofluorescence - MRPL1 antibody (ab67245)

ab67245 at 10µg/ml staining MRPL1 in HeLa cells.

Please note: All products are "FOR RESEARCH USE ONLY AND ARE NOT INTENDED FOR DIAGNOSTIC OR THERAPEUTIC USE"

Our Abpromise to you: Quality guaranteed and expert technical support

- Replacement or refund for products not performing as stated on the datasheet
- Valid for 12 months from date of delivery
- Response to your inquiry within 24 hours

- We provide support in Chinese, English, French, German, Japanese and Spanish
- Extensive multi-media technical resources to help you
- We investigate all quality concerns to ensure our products perform to the highest standards

If the product does not perform as described on this datasheet, we will offer a refund or replacement. For full details of the Abpromise, please visit <http://www.abcam.co.jp/abpromise> or contact our technical team.

Terms and conditions

- Guarantee only valid for products bought direct from Abcam or one of our authorized distributors