

Product datasheet

Anti-MCM8 antibody ab66761

画像数 1

製品の概要

製品名	Anti-MCM8 antibody
製品の詳細	Rabbit polyclonal to MCM8
アプリケーション	適用あり: WB, ELISA
種交差性	交差種: Human 交差が予測される動物種: Mouse, Rat, Rabbit, Horse, Chicken, Guinea pig, Cow, Cat, Dog
免疫原	A region within synthetic peptide: LRDAPEKTLA CMGLAIHQVL TKDLERHAAE LQAQEGLSND GETMV/NVPHI, corresponding to N terminal amino acids 145-194 of Human MCM8 Run BLAST with ExPASy Run BLAST with NCBI
ポジティブ・コントロール	Jurkat cell lysate

製品の特性

製品の状態	Liquid
保存方法	Shipped at 4°C. Upon delivery aliquot and store at -20°C or -80°C. Avoid repeated freeze / thaw cycles.
バッファー	Preservative: None Constituents: 2% Sucrose, PBS
精製度	Protein A purified
ポリ/モノ	ポリクローナル
アイソタイプ	IgG

アプリケーション

Our [Abpromise guarantee](#) covers the use of **ab66761** in the following tested applications.

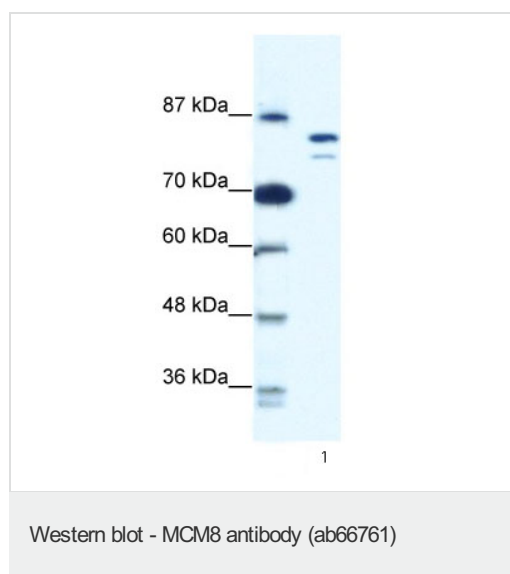
The application notes include recommended starting dilutions; optimal dilutions/concentrations should be determined by the end user.

アプリ ケーション	Abreviews	特記事項
WB		Use a concentration of 0.125 µg/ml. Detects a band of approximately 78, 82 kDa (predicted molecular weight: 93 kDa). Good results were obtained when blocked with 5% non-fat dry milk in 0.05% PBS-T.
ELISA		Use at an assay dependent concentration. ELISA titre using peptide based assay 1:62500.

ターゲット情報

機能	Component of the MCM8-MCM9 complex, a complex involved in homologous recombination repair following DNA interstrand cross-links and plays a key role during gametogenesis. The MCM8-MCM9 complex probably acts as a hexameric helicase downstream of the Fanconi anemia proteins BRCA2 and RAD51 and is required to process aberrant forks into homologous recombination substrates and to orchestrate homologous recombination with resection, fork stabilization and fork restart. May also play a non-essential for DNA replication: may be involved in the activation of the prereplicative complex (pre-RC) during G(1) phase by recruiting CDC6 to the origin recognition complex (ORC). Binds chromatin throughout the cell cycle.
組織特異性	Highest levels in placenta, lung and pancreas. Low levels in skeletal muscle and kidney. Expressed in various tumors with highest levels in colon and lung cancers.
配列類似性	Belongs to the MCM family. Contains 1 MCM domain.
細胞内局在	Nucleus. Localizes to nuclear foci and colocalizes with RAD51.

画像



Anti-MCM8 antibody (ab66761) at 0.125 µg/ml + Jurkat cell lysate at 10 µg

Secondary

HRP conjugated anti-Rabbit IgG at 1/50000 dilution

Predicted band size : 93 kDa

Observed band size : 82 kDa

Additional bands at : 78 kDa. We are unsure as to the identity of these extra bands.

Please note: All products are "FOR RESEARCH USE ONLY AND ARE NOT INTENDED FOR DIAGNOSTIC OR THERAPEUTIC USE"

Our Abpromise to you: Quality guaranteed and expert technical support

- Replacement or refund for products not performing as stated on the datasheet
- Valid for 12 months from date of delivery
- Response to your inquiry within 24 hours

- We provide support in Chinese, English, French, German, Japanese and Spanish
- Extensive multi-media technical resources to help you
- We investigate all quality concerns to ensure our products perform to the highest standards

If the product does not perform as described on this datasheet, we will offer a refund or replacement. For full details of the Abpromise, please visit <http://www.abcam.co.jp/abpromise> or contact our technical team.

Terms and conditions

- Guarantee only valid for products bought direct from Abcam or one of our authorized distributors