

## Product datasheet

# Anti-UPF3B/RENT3B antibody ab66753

### 画像数 2

#### 製品の概要

製品名	Anti-UPF3B/RENT3B antibody
製品の詳細	Rabbit polyclonal to UPF3B/RENT3B
由来種	Rabbit
アプリケーション	<b>適用あり:</b> WB, IHC-P, ELISA
種交差性	<b>交差種:</b> Human <b>交差が予測される動物種:</b> Mouse, Rat, Rabbit, Cow, Cat, Dog, Pig
免疫原	A region within synthetic peptide: MKEEKEHRPK EKRVTLTPA GATGSGGGTS GDSSKGEDKQ DRNKEKKEAL, corresponding to N terminal amino acids 1-50 of Human UPF3B/RENT3B <a href="#">Run BLAST with ExPASy</a> <a href="#">Run BLAST with NCBI</a>
ポジティブ・コントロール	Jurkat cells. Stomach.

#### 製品の特性

製品の状態	Liquid
保存方法	Shipped at 4°C. Upon delivery aliquot and store at -20°C. Avoid freeze / thaw cycles.
バッファー	Preservative: None Constituents: 2% Sucrose, PBS
精製度	Protein A purified
ポリ/モノ	ポリクローナル
アイソタイプ	IgG

#### アプリケーション

Our [Abpromise guarantee](#) covers the use of **ab66753** in the following tested applications.

The application notes include recommended starting dilutions; optimal dilutions/concentrations should be determined by the end user.

アプリケーション	Abreviews	特記事項

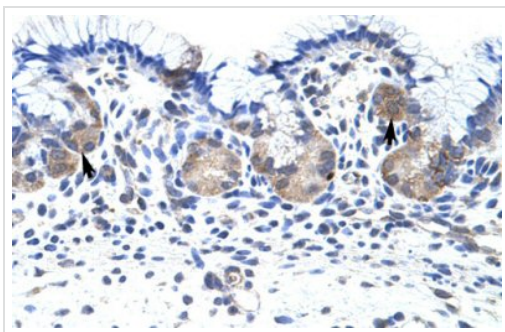
アプリケーション	Abreviews	特記事項
WB		Use a concentration of 1.25 µg/ml. Predicted molecular weight: 57 kDa. Good results were obtained when blocked with 5% non-fat dry milk in 0.05% PBS-T.
IHC-P		Use a concentration of 4 - 8 µg/ml.
ELISA		Use at an assay dependent concentration. Titre using peptide based assay: 1/312500.

## ターゲット情報

**関連性** UPF3B is part of a post-splicing multiprotein complex involved in both mRNA nuclear export and mRNA surveillance. mRNA surveillance detects exported mRNAs with truncated open reading frames and initiates nonsense-mediated mRNA decay (NMD). When translation ends upstream from the last exon-exon junction, this triggers NMD to degrade mRNAs containing premature stop codons. UPF3B binds to the mRNA and remains bound after nuclear export, acting as a nucleocytoplasmic shuttling protein. It forms with Y14 a complex that binds specifically 20 nt upstream of exon-exon junctions. This gene is located on the long arm of chromosome X (referenced from entrez gene).

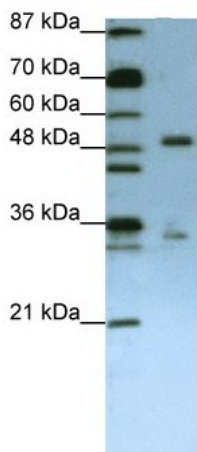
**細胞内局在** Nucleus. Cytoplasm. Note: Shuttling between the nucleus and the cytoplasm.

## 画像



Immunohistochemistry (Formalin/PFA-fixed paraffin-embedded sections) analysis of human stomach tissue labelling UPF3B/RENT3B with ab66753 at 4-8µg/ml. Arrows indicate positively labeling epithelial cells of the fundic gland. Magnification: 400X.

Immunohistochemistry (Formalin/PFA-fixed paraffin-embedded sections) - UPF3B/RENT3B antibody (ab66753)



Western blot - UPF3B/RENT3B antibody (ab66753)

Anti-UPF3B/RENT3B antibody (ab66753) at  
1.25 µg/ml + Jurkat cell lysate at 10 µg

**Secondary**

HRP-conjugated anti-rabbit IgG at 1/50000  
dilution

**Predicted band size:** 57 kDa

**Observed band size:** 52 kDa

**Additional bands at:** 35 kDa. We are unsure  
as to the identity of these extra bands.

**Please note:** All products are "FOR RESEARCH USE ONLY AND ARE NOT INTENDED FOR DIAGNOSTIC OR THERAPEUTIC USE"

**Our Abpromise to you: Quality guaranteed and expert technical support**

- Replacement or refund for products not performing as stated on the datasheet
- Valid for 12 months from date of delivery
- Response to your inquiry within 24 hours
- We provide support in Chinese, English, French, German, Japanese and Spanish
- Extensive multi-media technical resources to help you
- We investigate all quality concerns to ensure our products perform to the highest standards

If the product does not perform as described on this datasheet, we will offer a refund or replacement. For full details of the Abpromise, please visit <http://www.abcam.co.jp/abpromise> or contact our technical team.

**Terms and conditions**

- Guarantee only valid for products bought direct from Abcam or one of our authorized distributors