


Product datasheet

Anti-MTHFSD antibody ab66752

画像数 2

製品の概要

製品名	Anti-MTHFSD antibody
製品の詳細	Rabbit polyclonal to MTHFSD
由来種	Rabbit
アプリケーション	適用あり: WB, IHC-P, ELISA
種交差性	交差種: Human 交差が予測される動物種: Mouse, Rat, Rabbit, Horse, Chicken, Guinea pig, Cow, Cat, Dog, Pig 
免疫原	Synthetic peptide: LLVLQSKKTL LVPTPRLRTG LFNKITPPPG ATKDILRKCA TSQGVRNYSV, corresponding to amino acids 74-123 of Human MTHFSD <a href="#">Run BLAST with ExPASy</a> <a href="#">Run BLAST with NCBI</a>
ポジティブ・コントロール	Jurkat cells. Kidney.

製品の特性

製品の状態	Liquid
保存方法	Shipped at 4°C. Upon delivery aliquot and store at -20°C. Avoid freeze / thaw cycles.
バッファー	Preservative: None Constituents: 2% Sucrose, PBS
精製度	Protein A purified
ポリ/モノ	ポリクローナル
アイソタイプ	IgG

アプリケーション

Our [Abpromise guarantee](#) covers the use of **ab66752** in the following tested applications.

The application notes include recommended starting dilutions; optimal dilutions/concentrations should be determined by the end user.

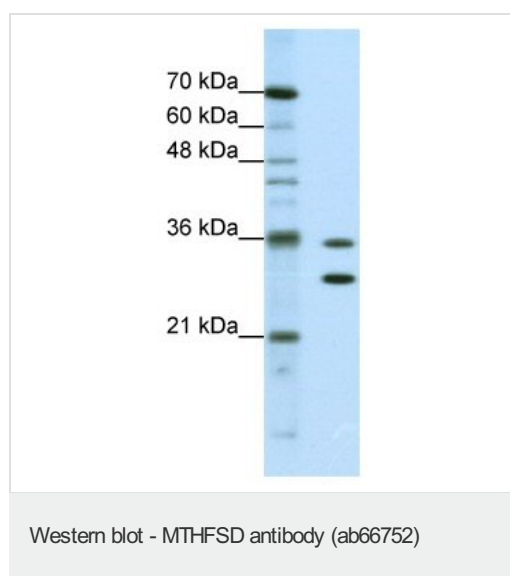
アプリ ケーション	Abreviews	特記事項
WB		Use a concentration of 0.625 µg/ml. Detects a band of approximately 34 kDa (predicted molecular weight: 42 kDa). Good results were obtained when blocked with 5% non-fat dry milk in 0.05% PBS-T.
IHC-P		Use a concentration of 4 - 8 µg/ml.
ELISA		Use at an assay dependent concentration. Titre using peptide based assay: 1/1562500.

## ターゲット情報

### 配列類似性

Contains 1 RRM (RNA recognition motif) domain.

## 画像



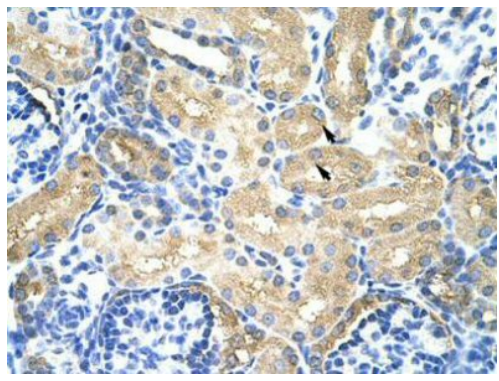
Anti-MTHFSD antibody (ab66752) at 0.525 µg/ml + Jurkat cell lysate at 10 µg

### Secondary

HRP-conjugated anti-Rabbit at 1/50000 dilution

**Predicted band size:** 42 kDa

Gel concentration 12%



Immunohistochemistry (Formalin/PFA-fixed paraffin-embedded sections) - MTHFSD antibody (ab66752)

Immunohistochemistry (Formalin/PFA-fixed paraffin-embedded sections) analysis of human kidney tissue labelling MTHFSD with ab66752 at 4-8 $\mu$ g/ml. Arrows indicate positively labelled epithelial cells of the renal tubule. Magnification: 400X.

**Please note:** All products are "FOR RESEARCH USE ONLY AND ARE NOT INTENDED FOR DIAGNOSTIC OR THERAPEUTIC USE"

### **Our Abpromise to you: Quality guaranteed and expert technical support**

- Replacement or refund for products not performing as stated on the datasheet
- Valid for 12 months from date of delivery
- Response to your inquiry within 24 hours
- We provide support in Chinese, English, French, German, Japanese and Spanish
- Extensive multi-media technical resources to help you
- We investigate all quality concerns to ensure our products perform to the highest standards

If the product does not perform as described on this datasheet, we will offer a refund or replacement. For full details of the Abpromise, please visit <http://www.abcam.co.jp/abpromise> or contact our technical team.

### **Terms and conditions**

- Guarantee only valid for products bought direct from Abcam or one of our authorized distributors