

Product datasheet

Anti-FOXG1 antibody ab66394

画像数 1

製品の概要

製品名	Anti-FOXG1 antibody
製品の詳細	Rabbit polyclonal to FOXG1
由来種	Rabbit
アプリケーション	適用あり: WB
種交差性	交差種: Human 交差が予測される動物種: Mouse, Rat, Horse, Chicken, Cow, Cat, Dog, Zebrafish 
免疫原	Synthetic peptide corresponding to Human FOXG1 aa 434-482. Sequence: MSARAASSSTSPQAPSTLPCESLRPSLPSFTTGLSGGLSDYFTHQNQGSS Database link: P55316 Run BLAST with Run BLAST with
ポジティブ・コントロール	Transfected 293T lysate

製品の特性

製品の状態	Liquid
保存方法	Shipped at 4°C. Upon delivery aliquot and store at -20°C or -80°C. Avoid repeated freeze / thaw cycles.
バッファー	Preservative: None Constituents: 2% Sucrose, PBS
精製度	Protein A purified
ポリ/モノ	ポリクローナル
アイソタイプ	IgG

アプリケーション

Our [Abpromise guarantee](#) covers the use of **ab66394** in the following tested applications.

The application notes include recommended starting dilutions; optimal dilutions/concentrations should be determined by the end user.

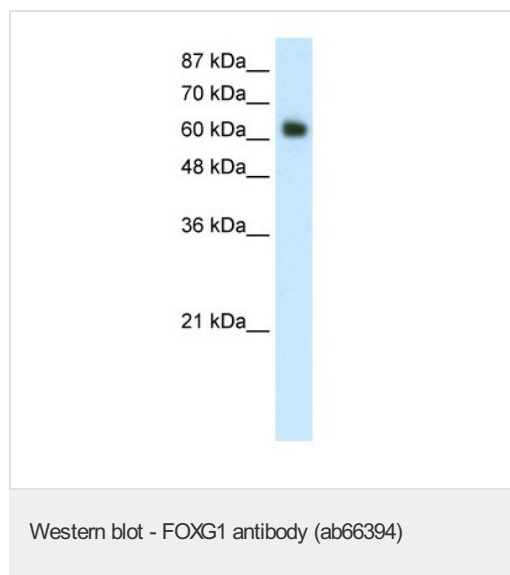
アプリ ケーション	Abreviews	特記事項
--------------	-----------	------

WB Use a concentration of 1.25 µg/ml. Detects a band of approximately 63 kDa (predicted molecular weight: 50 kDa). Good results were obtained when blocked with 5% non-fat dry milk in 0.05% PBS-T.

ターゲット情報

機能	Transcription repression factor which plays an important role in the establishment of the regional subdivision of the developing brain and in the development of the telencephalon.
組織特異性	Expression is restricted to the neurons of the developing telencephalon.
関連疾患	Defects in FOXC1 are the cause of congenital variant of Rett syndrome (RTTCV) [MIM:613454]. RTTCV is a severe neurodevelopmental disorder with features of classic Rett syndrome but earlier onset in the first months of life. Clinical features include progressive microcephaly, hypotonia, irresponsiveness and irritability in the neonatal period, mental retardation, psychomotor regression and stereotypical movements.
配列類似性	Contains 1 fork-head DNA-binding domain.
細胞内局在	Nucleus.

画像



Anti-FOXC1 antibody (ab66394) at 1.25 µg/ml
+ Transfected 293T lysate at 10 µg

Secondary

HRP conjugated anti-Rabbit IgG at 1/50000 dilution

Predicted band size: 50 kDa

Observed band size: 63 kDa

Gel concentration: 12%

Please note: All products are "FOR RESEARCH USE ONLY AND ARE NOT INTENDED FOR DIAGNOSTIC OR THERAPEUTIC USE"

Our Abpromise to you: Quality guaranteed and expert technical support

- Replacement or refund for products not performing as stated on the datasheet
- Valid for 12 months from date of delivery
- Response to your inquiry within 24 hours

- We provide support in Chinese, English, French, German, Japanese and Spanish
- Extensive multi-media technical resources to help you
- We investigate all quality concerns to ensure our products perform to the highest standards

If the product does not perform as described on this datasheet, we will offer a refund or replacement. For full details of the Abpromise, please visit <http://www.abcam.co.jp/abpromise> or contact our technical team.

Terms and conditions

- Guarantee only valid for products bought direct from Abcam or one of our authorized distributors