

## Product datasheet

# Anti-TGF beta antibody ab66043

★★★★☆ 28 Abreviews 62 References 画像数 7

### 製品の概要

製品名	Anti-TGF beta antibody
製品の詳細	Rabbit polyclonal to TGF beta
由来種	Rabbit
アプリケーション	適用あり: WB, IP, ELISA, ICC/IF, IHC-P, Flow Cyt
種交差性	交差種: Mouse, Rat, Human
免疫原	A synthetic peptide (17 aa) derived from C terminal human TGF beta 3 protein. (Peptide available as <a href="#">ab119811</a> .)
ポジティブ・コントロール	Breast carcinomas (MCF-7), Human Placenta, Intestine.

### 製品の特性

製品の状態	Liquid
保存方法	Shipped at 4°C. Upon delivery aliquot and store at -20°C or -80°C. Avoid repeated freeze / thaw cycles.
バッファー	Preservative: 0.05% Proclin Constituents: 1% BSA, PBS, pH 7.2
精製度	Immunogen affinity purified
ポリモノ	ポリクローナル
アイソタイプ	IgG

### アプリケーション

Our [Abpromise guarantee](#) covers the use of **ab66043** in the following tested applications.

The application notes include recommended starting dilutions; optimal dilutions/concentrations should be determined by the end user.

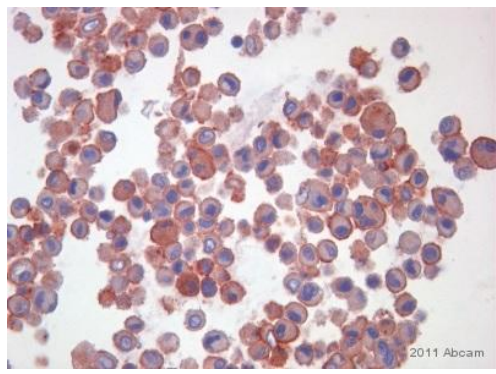
アプリケーション	Abreviews	特記事項
WB	★★★★☆	Use a concentration of 0.1 - 1 µg/ml. Detects a band of approximately 13 kDa (predicted molecular weight: 13 kDa).

アプリケーション	Abreviews	特記事項
IP		Use a concentration of 2 - 5 µg/ml.
ELISA	★★★★☆	Use a concentration of 0.01 - 0.1 µg/ml.
ICC/IF	★★★★★	Use a concentration of 1 µg/ml.
IHC-P	★★★★★	Use a concentration of 2 - 5 µg/ml. Perform heat mediated antigen retrieval with citrate buffer pH 6 before commencing with IHC staining protocol.
Flow Cyt	★★★★☆	Use at an assay dependent concentration. <a href="#">ab171870</a> - Rabbit polyclonal IgG, is suitable for use as an isotype control with this antibody.

## ターゲット情報

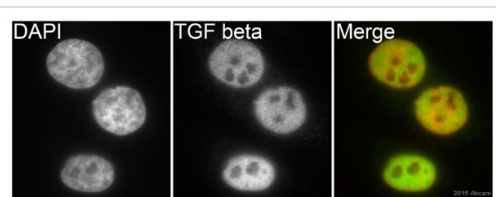
機能	Multifunctional protein that controls proliferation, differentiation and other functions in many cell types. Many cells synthesize TGFB1 and have specific receptors for it. It positively and negatively regulates many other growth factors. It plays an important role in bone remodeling as it is a potent stimulator of osteoblastic bone formation, causing chemotaxis, proliferation and differentiation in committed osteoblasts.
組織特異性	Highly expressed in bone. Abundantly expressed in articular cartilage and chondrocytes and is increased in osteoarthritis (OA). Co-localizes with ASPN in chondrocytes within OA lesions of articular cartilage.
関連疾患	Defects in TGFB1 are the cause of Camurati-Engelmann disease (CE) [MIM:131300]; also known as progressive diaphyseal dysplasia 1 (DPD1). CE is an autosomal dominant disorder characterized by hyperostosis and sclerosis of the diaphyses of long bones. The disease typically presents in early childhood with pain, muscular weakness and waddling gait, and in some cases other features such as exophthalmos, facial paralysis, hearing difficulties and loss of vision.
配列類似性	Belongs to the TGF-beta family.
翻訳後修飾	Glycosylated. The precursor is cleaved into mature TGF-beta-1 and LAP, which remains non-covalently linked to mature TGF-beta-1 rendering it inactive.
細胞内局在	Secreted > extracellular space > extracellular matrix.

## 画像



Immunohistochemistry (Formalin/PFA-fixed paraffin-embedded sections) - Anti-TGF beta antibody (ab66043)

ab66043 staining TGF beta in Human BAL cell tissue sections by Immunohistochemistry (IHC-P - paraformaldehyde-fixed, paraffin-embedded sections). Tissue was fixed with HOPE and blocked with 100% blocking solution for 5 minutes at 25°C. Samples were incubated with primary antibody (1/200 in blocking buffer) for 1 hour at 25°C. A HRP-conjugated Rat IgG polyclonal was used as the secondary antibody.



Immunocytochemistry/ Immunofluorescence - Anti-TGF beta antibody (ab66043)

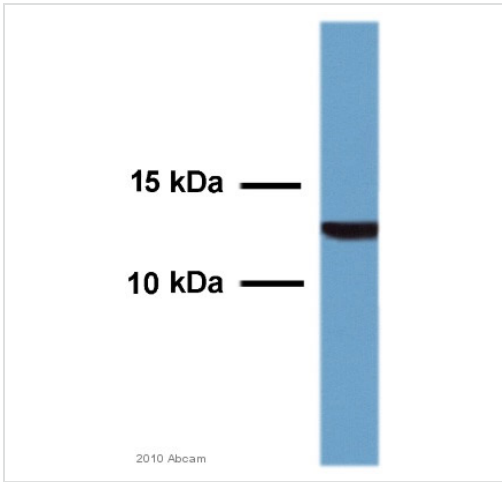
ab66043 staining TGF beta in HeLa cells by ICC/IF (Immunocytochemistry/immunofluorescence). Cells were fixed with paraformaldehyde and permeabilized with 0.5% TritonX100 in PBS. Samples were incubated with primary antibody (1/1000 in PBS) for 1 hour at 22°C. [ab150081](#) was used as the secondary antibody at 1/200.



Immunohistochemistry (Formalin/PFA-fixed paraffin-embedded sections) - Anti-TGF beta antibody (ab66043)

This image is courtesy of an Abreview submitted by Ross Benik

ab66043 staining TGF beta in Rat liver tissue sections by Immunohistochemistry (IHC-P - formaldehyde-fixed, paraffin-embedded sections). Tissue was fixed with formaldehyde and blocked with 0.25% serum for 15 minutes at 25°C ; antigen retrieval was by heat mediation in citrate (pH 6.0) buffer. Samples were incubated with primary antibody (1/50 in serum free antibody diluent) for 18 hours at 4°C. An undiluted HRP-conjugated Goat polymer was used as the secondary antibody.



Western blot - Anti-TGF beta antibody (ab66043)  
This image is courtesy of an anonymous Abreview

Anti-TGF beta antibody (ab66043) at 1/500 dilution (for 18 hours at 4°C) + Whole tissue lysate of mouse brain at 20 µg

**Secondary**

An HRP-conjugated Goat polyclonal at 1/10000 dilution

Developed using the ECL technique.

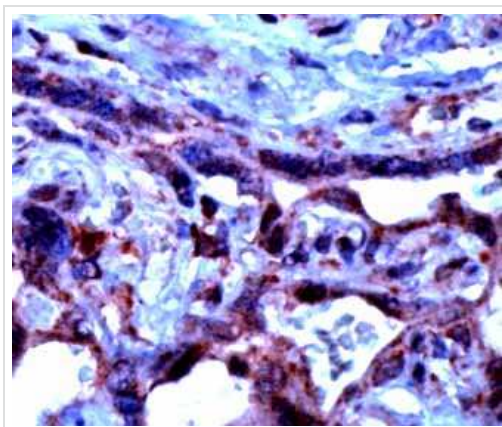
Performed under reducing conditions.

**Predicted band size:** 13 kDa

**Observed band size:** 13 kDa

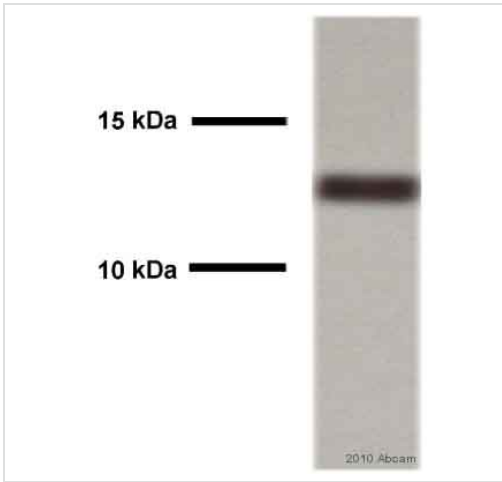
**Exposure time:** 90 seconds

**Blocking Step:** 5% Milk for 1 hour at 20°C



Immunohistochemistry (Formalin/PFA-fixed paraffin-embedded sections) - Anti-TGF beta antibody (ab66043)

Human placenta stained with Anti-TGF beta antibody (ab66043) at 1/100.



Western blot - Anti-TGF beta antibody (ab66043)  
Image courtesy of an anonymous Abreview.

Anti-TGF beta antibody (ab66043) at 1/500 dilution + whole tissue lysate prepared from rat intestine at 15 µg

**Secondary**

Goat anti-rabbit conjugated to HRP at 1/5000 dilution

Developed using the ECL technique.

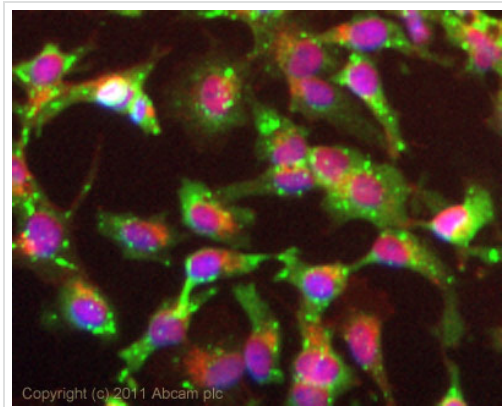
**Predicted band size:** 13 kDa

**Observed band size:** 13 kDa

**Exposure time:** 2 minutes

Primary antibody incubated for 2 hours at 23°C.

Blocking step performed using 5% milk for 1 hour at 23°C.



Immunocytochemistry/ Immunofluorescence - Anti-TGF beta antibody (ab66043)

ICC/IF image of ab66043 stained HepG2 cells. The cells were 4% formaldehyde fixed (10 min) and then incubated in 1%BSA / 10% normal goat serum / 0.3M glycine in 0.1% PBS-Tween for 1h to permeabilise the cells and block non-specific protein-protein interactions. The cells were then incubated with the antibody (ab66043, 1 µg/ml) overnight at +4°C. The secondary antibody (green) was Alexa Fluor® 488 goat anti-rabbit IgG (H+L) used at a 1/1000 dilution for 1h. Alexa Fluor® 594 WGA was used to label plasma membranes (red) at a 1/200 dilution for 1h. DAPI was used to stain the cell nuclei (blue) at a concentration of 1.43µM.

**Please note:** All products are "FOR RESEARCH USE ONLY AND ARE NOT INTENDED FOR DIAGNOSTIC OR THERAPEUTIC USE"

**Our Abpromise to you: Quality guaranteed and expert technical support**

- Replacement or refund for products not performing as stated on the datasheet
- Valid for 12 months from date of delivery
- Response to your inquiry within 24 hours
  
- We provide support in Chinese, English, French, German, Japanese and Spanish
- Extensive multi-media technical resources to help you
- We investigate all quality concerns to ensure our products perform to the highest standards

If the product does not perform as described on this datasheet, we will offer a refund or replacement. For full details of the Abpromise, please visit <http://www.abcam.co.jp/abpromise> or contact our technical team.

### **Terms and conditions**

---

- Guarantee only valid for products bought direct from Abcam or one of our authorized distributors