

## Product datasheet

# Anti-SS18 antibody ab66013

### 画像数 1

#### 製品の概要

製品名	Anti-SS18 antibody
製品の詳細	Rabbit polyclonal to SS18
由来種	Rabbit
特異性	ab66013 detects endogenous levels of total SS18 protein.
アプリケーション	<b>適用あり:</b> ELISA, WB
種交差性	<b>交差種:</b> Human <b>交差が予測される動物種:</b> Mouse, Rat
免疫原	Synthetic peptide derived from N terminus of human SS18.
ポジティブ・コントロール	Extracts from HepG2 cells, COLO205 cells and Jurkat cells.

#### 製品の特性

製品の状態	Liquid
保存方法	Shipped at 4°C. Store at -20°C. Stable for 12 months at -20°C.
バッファー	Preservative: 0.02% Sodium Azide Constituents: 50% Glycerol, PBS (without Mg <sup>2+</sup> and Ca <sup>2+</sup> ), 150mM Sodium chloride, pH 7.4
精製度	Immunogen affinity purified
特記事項 (精製)	ab66013 was affinity purified from rabbit antiserum by affinity chromatography using epitope specific immunogen.
ポリ/モノ	ポリクローナル
アイソタイプ	IgG

#### アプリケーション

Our [Abpromise guarantee](#) covers the use of **ab66013** in the following tested applications.

The application notes include recommended starting dilutions; optimal dilutions/concentrations should be determined by the end user.

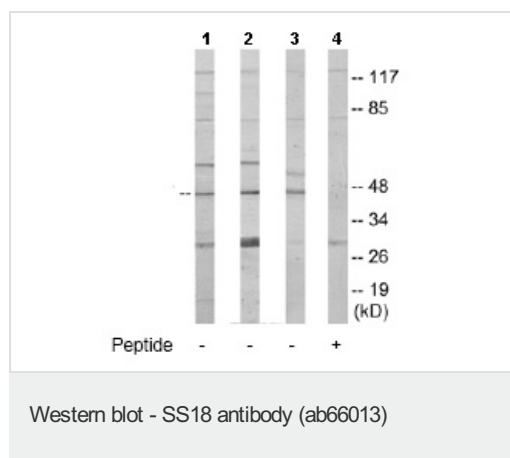
アプリケーション	Abreviews	特記事項
ELISA		1/5000.

アプリケーション	Abreviews	特記事項
WB		1/500 - 1/1000. Detects a band of approximately 44 kDa (predicted molecular weight: 42 kDa).

## ターゲット情報

機能	Appears to function synergistically with RBM14 as a transcriptional coactivator. Isoform 1 and isoform 2 function in nuclear receptor coactivation. Isoform 1 and isoform 2 function in general transcriptional coactivation.
組織特異性	Fairly ubiquitously expressed. Expressed in synovial sarcomas and in other human cell lines. The fusion genes SSXT-SSX1 and SSXT-SSX2 are expressed only in synovial sarcomas.
関連疾患	Note=A chromosomal aberration involving SS18 may be a cause of synovial sarcoma. Translocation t(X;18)(p11.2;q11.2). The translocation is specifically found in more than 80% of synovial sarcoma. The fusion products SSXT-SSX1 or SSXT-SSX2 are probably responsible for transforming activity. Heterogeneity in the position of the breakpoint can occur (low frequency).
配列類似性	Belongs to the SS18 family.
細胞内局在	Nucleus.

## 画像



**All lanes** : Anti-SS18 antibody (ab66013) at 1/500 dilution

**Lane 1** : HepG2 cell extracts

**Lane 2** : COLO205 cell extracts

**Lane 3** : Jurkat cell extracts

**Lane 4** : Jurkat cell extracts with immunising peptide at 10 µg

Lysates/proteins at 30 µg per lane.

**Predicted band size:** 42 kDa

**Observed band size:** 44 kDa

**Additional bands at:** 120 kDa, 30 kDa, 80 kDa. We are unsure as to the identity of these extra bands.

**Please note:** All products are "FOR RESEARCH USE ONLY AND ARE NOT INTENDED FOR DIAGNOSTIC OR THERAPEUTIC USE"

**Our Promise to you: Quality guaranteed and expert technical support**

- Replacement or refund for products not performing as stated on the datasheet
- Valid for 12 months from date of delivery
- Response to your inquiry within 24 hours
  
- We provide support in Chinese, English, French, German, Japanese and Spanish
- Extensive multi-media technical resources to help you
- We investigate all quality concerns to ensure our products perform to the highest standards

If the product does not perform as described on this datasheet, we will offer a refund or replacement. For full details of the Abpromise, please visit <http://www.abcam.co.jp/abpromise> or contact our technical team.

### **Terms and conditions**

---

- Guarantee only valid for products bought direct from Abcam or one of our authorized distributors