


Product datasheet

Anti-FOXC2 antibody ab65141

★★★★☆ 3 Abreviews 3 References 画像数 2

製品の概要

製品名	Anti-FOXC2 antibody
製品の詳細	Rabbit polyclonal to FOXC2
由来種	Rabbit
アプリケーション	適用あり: WB, IHC-P
種交差性	交差種: Mouse, Rat, Human 交差が予測される動物種: Horse 
免疫原	Synthetic peptide conjugated to KLH derived from within residues 450 to the C-terminus of Human FOXC2.Immunogen の所有権に関して(Peptide available as ab86226 .)
ポジティブ・コントロール	This antibody gave a positive signal in the following Whole Cell Lysates: Jurkat, MCF7, MDA-MB-361, A549, PC12.

製品の特性

製品の状態	Liquid
保存方法	Shipped at 4°C. Store at +4°C short term (1-2 weeks). Upon delivery aliquot. Store at -20°C or -80°C. Avoid freeze / thaw cycle.
バッファー	Preservative: 0.02% Sodium Azide Constituents: 1% BSA, PBS, pH 7.4
精製度	Immunogen affinity purified
ポリモノ	ポリクローナル
アイソタイプ	IgG

アプリケーション

Our [Abpromise guarantee](#) covers the use of **ab65141** in the following tested applications.

The application notes include recommended starting dilutions; optimal dilutions/concentrations should be determined by the end user.

アプリケーション	Abreviews	特記事項
WB		

アプリケーション	Abreviews	特記事項
IHC-P	★★★★☆	
追加情報	<p>WB: Use at a concentration of 1 µg/ml. Detects a band of approximately 50 kDa (predicted molecular weight: 54 kDa).</p> <p>Not yet tested in other applications.</p> <p>Optimal dilutions/concentrations should be determined by the end user.</p>	
ターゲット情報		
機能	<p>Transcriptional activator. Might be involved in the formation of special mesenchymal tissues.</p>	
関連疾患	<p>Defects in FOXC2 are the cause of lymphedema hereditary type 2 (LMPH2) [MIM:153200]; also known as Meige lymphedema. Hereditary lymphedema is a chronic disabling condition which results in swelling of the extremities due to altered lymphatic flow. Patients with lymphedema suffer from recurrent local infections, and physical impairment.</p> <p>Defects in FOXC2 are a cause of lymphedema-yellow nails (LYYN) [MIM:153300]. LYYN is characterized by yellow, dystrophic, thick and slowly growing nails, associated with lymphedema and respiratory involvement. Lymphedema occurs more often in the lower limbs. It can appear at birth or later in life. Onset generally follows the onset of ungual abnormalities.</p> <p>Defects in FOXC2 are a cause of lymphedema-distichiasis (LYD) [MIM:153400]. LYD is characterized by primary limb lymphedema usually starting at puberty (but in some cases later or at birth) and associated with distichiasis (double rows of eyelashes, with extra eyelashes growing from the Meibomian gland orifices).</p>	
配列類似性	<p>Contains 1 fork-head DNA-binding domain.</p>	
細胞内局在	<p>Nucleus.</p>	

画像



Western blot - Anti-FOXC2 antibody (ab65141)

All lanes : Anti-FOXC2 antibody (ab65141)
at 1 µg/ml

Lane 1 : Jurkat (Human T cell lymphoblast-like cell line) Whole Cell Lysate

Lane 2 : MCF7 (Human breast adenocarcinoma cell line) Whole Cell Lysate

Lane 3 : MDA-MB-361 (Human breast adenocarcinoma cell line) Whole Cell Lysate

Lane 4 : A549 (Human lung adenocarcinoma epithelial cell line) Whole Cell Lysate

Lane 5 : PC12 (Rat adrenal pheochromocytoma cell line) Whole Cell Lysate

Lysates/proteins at 10 µg per lane.

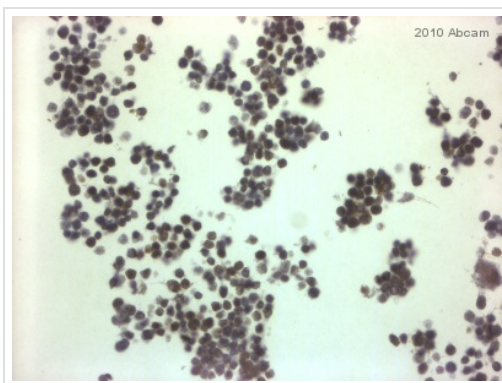
Secondary

All lanes : Goat polyclonal to Rabbit IgG - H&L - Pre-Adsorbed (HRP) at 1/3000 dilution

Performed under reducing conditions.

Predicted band size: 54 kDa

Observed band size: 50 kDa



Immunohistochemistry (Formalin/PFA-fixed paraffin-embedded sections) - Anti-FOXC2 antibody (ab65141)

This image is a courtesy of Antibody Solutions Ltd

ab65141 staining FOXC2 in mouse bone marrow tissue section by Immunohistochemistry (Formalin/PFA-fixed paraffin-embedded sections). Tissue underwent formaldehyde fixation before heat mediated antigen retrieval and then blocking was performed (5 minutes of peroxidase block and 10 minutes of protein block) for 15 minutes at 20°C. The primary antibody was diluted at 1/250 and incubated with sample for 45 minutes at 20°C. A HRP conjugated goat polyclonal to rabbit IgG was used undiluted as secondary antibody.

Our Abpromise to you: Quality guaranteed and expert technical support

- Replacement or refund for products not performing as stated on the datasheet
- Valid for 12 months from date of delivery
- Response to your inquiry within 24 hours

- We provide support in Chinese, English, French, German, Japanese and Spanish
- Extensive multi-media technical resources to help you
- We investigate all quality concerns to ensure our products perform to the highest standards

If the product does not perform as described on this datasheet, we will offer a refund or replacement. For full details of the Abpromise, please visit <http://www.abcam.co.jp/abpromise> or contact our technical team.

Terms and conditions

- Guarantee only valid for products bought direct from Abcam or one of our authorized distributors