


Product datasheet

Anti-TRAP100 antibody ab65110

画像数 2

製品の概要

製品名	Anti-TRAP100 antibody
製品の詳細	Rabbit polyclonal to TRAP100
由来種	Rabbit
アプリケーション	適用あり: ELISA, WB, ICC/IF
種交差性	交差種: Human 交差が予測される動物種: Mouse, Rat 
免疫原	Synthetic peptide (Human) from an internal sequence.
ポジティブ・コントロール	WB: Extracts from 293 cells. ICC/IF: HUVEC cells.

製品の特性

製品の状態	Liquid
保存方法	Shipped at 4°C. Store at -20°C. Stable for 12 months at -20°C.
バッファー	Preservative: 0.02% Sodium Azide Constituents: 50% Glycerol, PBS, 150mM Sodium chloride, pH 7.4
精製度	Immunogen affinity purified
ポリ/モノ	ポリクローナル
アイソタイプ	IgG

アプリケーション

Our [Abpromise guarantee](#) covers the use of **ab65110** in the following tested applications.

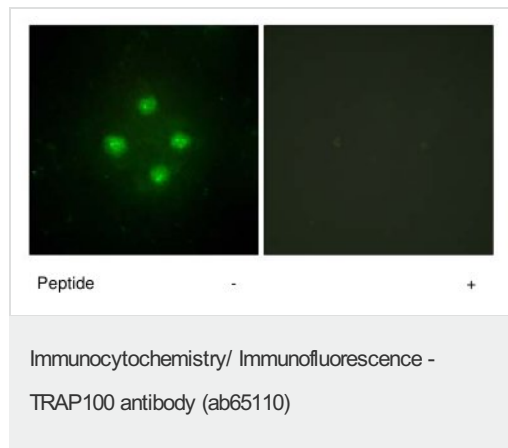
The application notes include recommended starting dilutions; optimal dilutions/concentrations should be determined by the end user.

アプリケーション	Abreviews	特記事項
ELISA		1/20000.
WB		1/500 - 1/1000. Detects a band of approximately 110 kDa (predicted molecular weight: 110 kDa).
ICC/IF		1/500 - 1/1000.

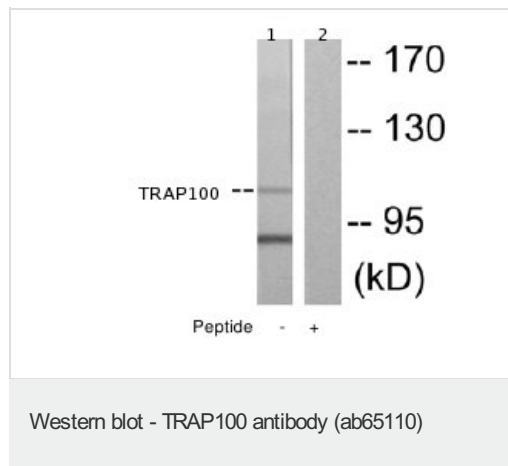
## ターゲット情報

<b>機能</b>	Component of the Mediator complex, a coactivator involved in the regulated transcription of nearly all RNA polymerase II-dependent genes. Mediator functions as a bridge to convey information from gene-specific regulatory proteins to the basal RNA polymerase II transcription machinery. Mediator is recruited to promoters by direct interactions with regulatory proteins and serves as a scaffold for the assembly of a functional preinitiation complex with RNA polymerase II and the general transcription factors.
<b>組織特異性</b>	Ubiquitous. Abundant in skeletal muscle, heart and placenta.
<b>配列類似性</b>	Belongs to the Mediator complex subunit 24 family.
<b>細胞内局在</b>	Nucleus.

## 画像



These images show Huvec cell line stained with ab65110 at a 1/500 dilution, with and without the immunising peptide.



**All lanes :** Anti-TRAP100 antibody (ab65110) at 1/500 dilution

**Lane 1 :** extracts from 293 cells

**Lane 2 :** extracts from 293 cells with immunising peptide at 5 µg

Lysates/proteins at 5 µg per lane.

**Predicted band size:** 110 kDa

**Observed band size:** 110 kDa

**Additional bands at:** 80 kDa. We are unsure as to the identity of these extra bands.

**Please note:** All products are "FOR RESEARCH USE ONLY AND ARE NOT INTENDED FOR DIAGNOSTIC OR THERAPEUTIC USE"

## **Our Abpromise to you: Quality guaranteed and expert technical support**

---

- Replacement or refund for products not performing as stated on the datasheet
- Valid for 12 months from date of delivery
- Response to your inquiry within 24 hours
  
- We provide support in Chinese, English, French, German, Japanese and Spanish
- Extensive multi-media technical resources to help you
- We investigate all quality concerns to ensure our products perform to the highest standards

If the product does not perform as described on this datasheet, we will offer a refund or replacement. For full details of the Abpromise, please visit <http://www.abcam.co.jp/abpromise> or contact our technical team.

## **Terms and conditions**

---

- Guarantee only valid for products bought direct from Abcam or one of our authorized distributors