

Product datasheet

Anti-MAPKAP Kinase 3 antibody ab64972

画像数 3

製品の概要

| | |
|--------------|--|
| 製品名 | Anti-MAPKAP Kinase 3 antibody |
| 製品の詳細 | Rabbit polyclonal to MAPKAP Kinase 3 |
| アプリケーション | 適用あり: IHC-P, ELISA, WB, ICC/IF |
| 種交差性 | 交差種: Human 交差が予測される動物種: Mouse, Rat |
| 免疫原 | Synthetic peptide derived from internal region of human MAPKAP Kinase 3. |
| ポジティブ・コントロール | Human skeletal muscle tissue. Extracts from COLO205 cells. |

製品の特性

| | |
|--------|--|
| 製品の状態 | Liquid |
| 保存方法 | Shipped at 4°C. Store at -20°C. Stable for 12 months at -20°C. |
| バッファー | Preservative: 0.02% Sodium Azide Constituents: 50% Glycerol, PBS, 150mM Sodium chloride, pH 7.4 |
| 精製度 | Immunogen affinity purified |
| ポリ/モノ | ポリクローナル |
| アイソタイプ | IgG |

アプリケーション

Our [Abpromise guarantee](#) covers the use of **ab64972** in the following tested applications.

The application notes include recommended starting dilutions; optimal dilutions/concentrations should be determined by the end user.

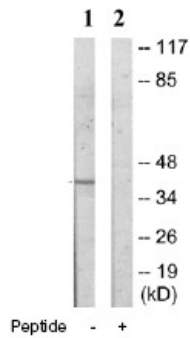
| アプリケーション | Abreviews | 特記事項 |
|----------|-----------|--|
| IHC-P | | 1/50 - 1/100. |
| ELISA | | 1/20000. |
| WB | | 1/500 - 1/1000. Detects a band of approximately 43 kDa (predicted molecular weight: 43 kDa). |

| アプリケーション | Abreviews | 特記事項 |
|----------|-----------|-------------------------------------|
| ICC/IF | | Use a concentration of 1 - 5 µg/ml. |

ターゲット情報

| | |
|--------------|---|
| 機能 | Stress-activated serine/threonine-protein kinase involved in cytokines production, endocytosis, cell migration, chromatin remodeling and transcriptional regulation. Following stress, it is phosphorylated and activated by MAP kinase p38-alpha/MAPK14, leading to phosphorylation of substrates. Phosphorylates serine in the peptide sequence, Hyd-X-R-X(2)-S, where Hyd is a large hydrophobic residue. MAPKAPK2 and MAPKAPK3, share the same function and substrate specificity, but MAPKAPK3 kinase activity and level in protein expression are lower compared to MAPKAPK2. Phosphorylates HSP27/HSPB1, KRT18, KRT20, RCSD1, RPS6KA3, TAB3 and TTP/ZFP36. Mediates phosphorylation of HSP27/HSPB1 in response to stress, leading to dissociate HSP27/HSPB1 from large small heat-shock protein (sHsps) oligomers and impair their chaperone activities and ability to protect against oxidative stress effectively. Involved in inflammatory response by regulating tumor necrosis factor (TNF) and IL6 production post-transcriptionally: acts by phosphorylating AU-rich elements (AREs)-binding proteins, such as TTP/ZFP36, leading to regulate the stability and translation of TNF and IL6 mRNAs. Phosphorylation of TTP/ZFP36, a major post-transcriptional regulator of TNF, promotes its binding to 14-3-3 proteins and reduces its ARE mRNA affinity leading to inhibition of dependent degradation of ARE-containing transcript. Involved in toll-like receptor signaling pathway (TLR) in dendritic cells: required for acute TLR-induced macropinocytosis by phosphorylating and activating RPS6KA3. Also acts as a modulator of Polycomb-mediated repression. |
| 組織特異性 | Widely expressed, with a higher expression level observed in heart and skeletal muscle. No expression in brain. |
| 配列類似性 | Belongs to the protein kinase superfamily. CAMK Ser/Thr protein kinase family. Contains 1 protein kinase domain. |
| 翻訳後修飾 | Phosphorylated and activated by MAPK1/ERK2 and MAPK3/ERK1. Phosphorylated and activated by MAP kinase p38-alpha/MAPK14 at Thr-201, Ser-251 and Thr-313. |
| 細胞内局在 | Nucleus. Cytoplasm. Predominantly located in the nucleus, when activated it translocates to the cytoplasm. |

画像



Western blot - MAPKAP Kinase 3 antibody (ab64972)

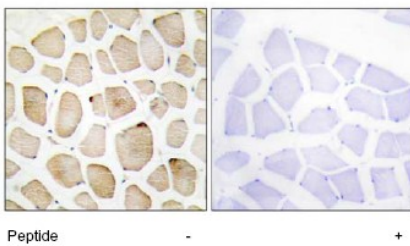
All lanes : Anti-MAPKAP Kinase 3 antibody (ab64972) at 1/500 dilution

Lane 1 : extracts from COLO205 cells, without immunising peptide

Lane 2 : extracts from COLO205 cells, with immunising peptide

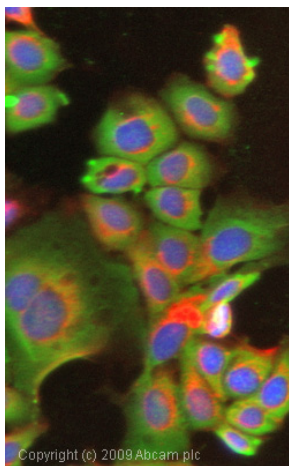
Predicted band size : 43 kDa

Observed band size : 43 kDa



Immunohistochemistry (Formalin/PFA-fixed paraffin-embedded sections) - MAPKAP Kinase 3 antibody (ab64972)

Immunohistochemistry analysis of paraffin-embedded human skeletal muscle tissue using MAPKAP Kinase 3 antibody (ab64972) at 1/50 dilution. Left: no immunising peptide. Right: with immunising peptide.



Immunocytochemistry/ Immunofluorescence- MAPKAP Kinase 3 antibody(ab64972)

ICC/IF image of ab64972 stained MCF7 cells. The cells were 100% methanol fixed (5 min) and then incubated in 1%BSA / 10% normal goat serum / 0.3M glycine in 0.1% PBS-Tween for 1h to permeabilise the cells and block non-specific protein-protein interactions. The cells were then incubated with the antibody (ab64972, 1µg/ml) overnight at +4°C. The secondary antibody (green) was Alexa Fluor® 488 goat anti-rabbit IgG (H+L) used at a 1/1000 dilution for 1h. Alexa Fluor® 594 WGA was used to label plasma membranes (red) at a 1/200 dilution for 1h. DAPI was used to stain the cell nuclei (blue) at a concentration of 1.43µM.

Our Abpromise to you: Quality guaranteed and expert technical support

- Replacement or refund for products not performing as stated on the datasheet
- Valid for 12 months from date of delivery
- Response to your inquiry within 24 hours

- We provide support in Chinese, English, French, German, Japanese and Spanish
- Extensive multi-media technical resources to help you
- We investigate all quality concerns to ensure our products perform to the highest standards

If the product does not perform as described on this datasheet, we will offer a refund or replacement. For full details of the Abpromise, please visit <http://www.abcam.co.jp/abpromise> or contact our technical team.

Terms and conditions

- Guarantee only valid for products bought direct from Abcam or one of our authorized distributors