

Product datasheet

Anti-PDCD6 antibody, prediluted ab64104

画像数 1

製品の概要

製品名	Anti-PDCD6 antibody, prediluted
製品の詳細	Rabbit polyclonal to PDCD6, prediluted
由来種	Rabbit
アプリケーション	適用あり: IHC-P
種交差性	交差種: Human
免疫原	Synthetic peptide corresponding to the C-terminal of human PDCD6.
ポジティブ・コントロール	Human lung carcinoma.

製品の特性

製品の状態	Prediluted
保存方法	Shipped at 4°C. Store at +4°C.
バッファー	Preservative: 0.1% Sodium Azide Constituents: 1% BSA, 50mM Tris, pH 7.6
精製度	Protein A purified
ポリ/モノ	ポリクローナル
アイソタイプ	IgG

アプリケーション

Our [Abpromise guarantee](#) covers the use of **ab64104** in the following tested applications.

The application notes include recommended starting dilutions; optimal dilutions/concentrations should be determined by the end user.

アプリケーション	Abreviews	特記事項
IHC-P		

追加情報

IHC-P: Ready-to-use for 30 min at room temperature. Staining of formalin-fixed tissues requires boiling tissue sections in 10mM citrate buffer, pH 6.0 for 10 min followed by cooling at room temperature for 20 min.

Not yet tested in other applications.

Optimal dilutions/concentrations should be determined by the end user.

ターゲット情報

機能

Calcium-binding protein required for T-cell receptor-, Fas-, and glucocorticoid-induced cell death. May mediate Ca²⁺-regulated signals along the death pathway (By similarity). Calcium-dependent adapter necessary for the association between PDCD6IP and TSG101. Interaction with DAPK1 can accelerate apoptotic cell death by increasing caspase-3 activity. May inhibit KDR/VEGFR2-dependent angiogenesis; the function involves inhibition of VEGF-induced phosphorylation of the Akt signaling pathway. Seems to play a role in the regulation of the distribution and function of MCOLN1 in the endosomal pathway. Isoform 2 has a lower Ca²⁺ affinity than isoform 1. Isoform 1 and, to a lesser extent, isoform 2, can stabilize SHISA5.

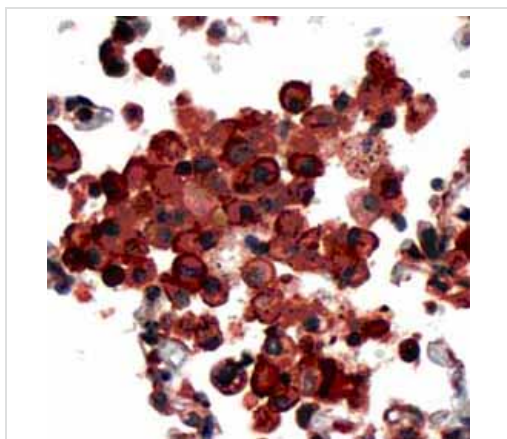
配列類似性

Contains 5 EF-hand domains.

細胞内局在

Nucleus membrane. Endoplasmic reticulum membrane. Nucleus. Endosome. Interaction with RBM22 induces relocalization from the cytoplasm to the nucleus. Translocated from the cytoplasm to the nucleus after heat shock cell treatment. Accumulates in cytoplasmic vesicle-like organelles after heat shock treatment, which may represent stress granules.

画像



Immunohistochemical analysis of PDCD6 expression in human lung carcinoma using ab64104 on formalin-fixed, paraffin-embedded tissue. Staining pattern: Cytoplasmic and cell membrane.

Immunohistochemistry (Formalin/PFA-fixed paraffin-embedded sections) - PDCD6 antibody, prediluted (ab64104)

Please note: All products are "FOR RESEARCH USE ONLY AND ARE NOT INTENDED FOR DIAGNOSTIC OR THERAPEUTIC USE"

Our Abpromise to you: Quality guaranteed and expert technical support

- Replacement or refund for products not performing as stated on the datasheet
- Valid for 12 months from date of delivery
- Response to your inquiry within 24 hours
- We provide support in Chinese, English, French, German, Japanese and Spanish

- Extensive multi-media technical resources to help you
- We investigate all quality concerns to ensure our products perform to the highest standards

If the product does not perform as described on this datasheet, we will offer a refund or replacement. For full details of the Abpromise, please visit <http://www.abcam.co.jp/abpromise> or contact our technical team.

Terms and conditions

- Guarantee only valid for products bought direct from Abcam or one of our authorized distributors