

Product datasheet

Anti-CCDC112 antibody ab62524

画像数 2

製品の概要

| | |
|--------------|---|
| 製品名 | Anti-CCDC112 antibody |
| 製品の詳細 | Rabbit polyclonal to CCDC112 |
| 由来種 | Rabbit |
| アプリケーション | 適用あり: WB, IHC-P |
| 種交差性 | 交差種: Human 交差が予測される動物種: Mouse, Rat, Rabbit, Horse, Cow, Dog, Pig |
| 免疫原 | Synthetic peptide, corresponding to N terminal amino acids 71-120 of Human CCDC112 (VRTAEKFKNQ VINMEKDKHS HFYNQKSDFR IEHSMLEELE NKLIHSRKTE) Run BLAST with Run BLAST with |
| ポジティブ・コントロール | Human kidney tissue Jurkat cell lysate |

製品の特性

| | |
|--------|---|
| 製品の状態 | Liquid |
| 保存方法 | Shipped at 4°C. Upon delivery aliquot and store at -20°C. Avoid freeze / thaw cycles. |
| バッファー | Preservative: None Constituents: 2% Sucrose, PBS |
| 精製度 | Protein A purified |
| ポリ/モノ | ポリクローナル |
| アイソタイプ | IgG |

アプリケーション

Our [Abpromise guarantee](#) covers the use of **ab62524** in the following tested applications.

The application notes include recommended starting dilutions; optimal dilutions/concentrations should be determined by the end user.

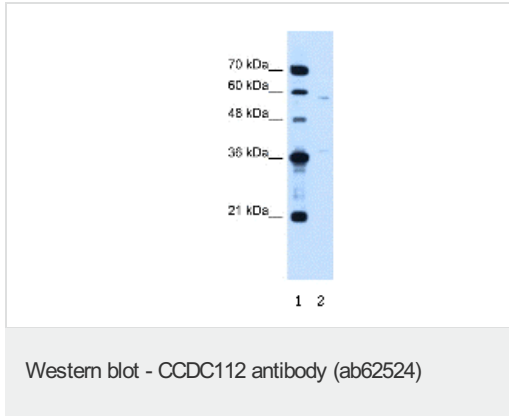
| アプリケーション | Abreviews | 特記事項 |
|----------|-----------|---|
| WB | | Use a concentration of 1.25 µg/ml. Detects a band of approximately 53 kDa. Good results were obtained when blocked with 5% non-fat dry milk in 0.05% PBS-T. |

| アプリケーション | Abreviews | 特記事項 |
|----------|-----------|------|
|----------|-----------|------|

IHC-P Use a concentration of 4 - 8 µg/ml.

ターゲット情報

画像

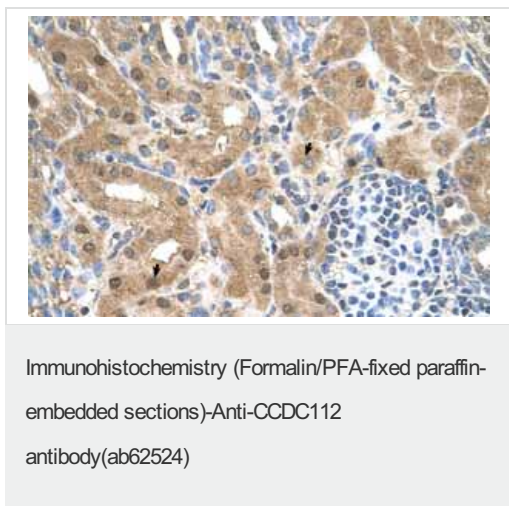


Anti-CCDC112 antibody (ab62524) at 1.25 µg/ml + Jurkat cell lysate at 10 µg

Secondary
HRP conjugated anti-Rabbit IgG at 1/50000 dilution

Observed band size: 53 kDa

Gel concentration: 12%



Immunohistochemistry (Formalin/PFA-fixed paraffin-embedded sections) analysis of human kidney tissue labelling CCDC112 with ab62524 at 4-8µg/ml. Arrows indicate positively labelled epithelial cells of the renal tubule. Magnification: 400X.

Please note: All products are "FOR RESEARCH USE ONLY AND ARE NOT INTENDED FOR DIAGNOSTIC OR THERAPEUTIC USE"

Our Abpromise to you: Quality guaranteed and expert technical support

- Replacement or refund for products not performing as stated on the datasheet
- Valid for 12 months from date of delivery
- Response to your inquiry within 24 hours

- We provide support in Chinese, English, French, German, Japanese and Spanish
- Extensive multi-media technical resources to help you
- We investigate all quality concerns to ensure our products perform to the highest standards

If the product does not perform as described on this datasheet, we will offer a refund or replacement. For full details of the Abpromise, please visit <http://www.abcam.co.jp/abpromise> or contact our technical team.

Terms and conditions

- Guarantee only valid for products bought direct from Abcam or one of our authorized distributors