

## Product datasheet

# Anti-Bad (phospho S91) antibody ab62211

### 画像数 1

#### 製品の概要

製品名	Anti-Bad (phospho S91) antibody
製品の詳細	Rabbit polyclonal to Bad (phospho S91)
特異性	ab62211 detects endogenous levels of Bad only when phosphorylated at serine 91 (Human: Ser91; Mouse: Ser128; Rat: Ser129).
アプリケーション	<b>適用あり:</b> IHC-P, ELISA
種交差性	<b>交差種:</b> Human <b>交差が予測される動物種:</b> Mouse, Rat ▲
免疫原	Synthetic peptide corresponding to Human Bad. Immunogen range is from aa 61-110. The antiserum was produced against synthesized peptide derived from human BAD around the phosphorylation site of Ser91(around mouse S128). Database link: <a href="#">Q92934</a>
ポジティブ・コントロール	Human breast carcinoma tissue.

#### 製品の特性

製品の状態	Liquid
保存方法	Shipped at 4°C. Store at -20°C. Stable for 12 months at -20°C.
バッファー	Preservative: 0.02% Sodium Azide Constituents: 50% Glycerol, PBS, 150mM Sodium chloride, pH 7.4
精製度	Immunogen affinity purified
特記事項(精製)	ab62211 was affinity-purified from rabbit antiserum by affinity-chromatography using epitope-specific phosphopeptide. The antibody against non-phosphopeptide was removed by chromatography using non-phosphopeptide corresponding to the phosphorylation site.
ポリ/モノ	ポリクローナル
アイソタイプ	IgG

#### アプリケーション

Our [Abpromise guarantee](#) covers the use of **ab62211** in the following tested applications.

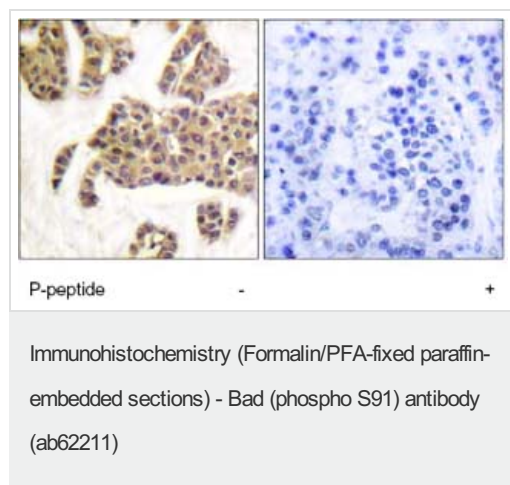
The application notes include recommended starting dilutions; optimal dilutions/concentrations should be determined by the end user.

アプリケーション	Abreviews	特記事項
IHC-P		1/50 - 1/100.
ELISA		1/10000.

## ターゲット情報

機能	Promotes cell death. Successfully competes for the binding to Bcl-X(L), Bcl-2 and Bcl-W, thereby affecting the level of heterodimerization of these proteins with BAX. Can reverse the death repressor activity of Bcl-X(L), but not that of Bcl-2 (By similarity). Appears to act as a link between growth factor receptor signaling and the apoptotic pathways.
組織特異性	Expressed in a wide variety of tissues.
配列類似性	Belongs to the Bcl-2 family.
ドメイン	Intact BH3 motif is required by BIK, BID, BAK, BAD and BAX for their pro-apoptotic activity and for their interaction with anti-apoptotic members of the Bcl-2 family.
翻訳後修飾	Phosphorylated on one or more of Ser-75, Ser-99, Ser-118 and Ser-134 in response to survival stimuli, which blocks its pro-apoptotic activity. Phosphorylation on Ser-99 or Ser-75 promotes heterodimerization with 14-3-3 proteins. This interaction then facilitates the phosphorylation at Ser-118, a site within the BH3 motif, leading to the release of Bcl-X(L) and the promotion of cell survival. Ser-99 is the major site of AKT/PKB phosphorylation, Ser-118 the major site of protein kinase A (CAPK) phosphorylation. Ser-75 is phosphorylated by AKT/PKB, protein kinase A and PIM2.
細胞内局在	Mitochondrion outer membrane. Cytoplasm. Upon phosphorylation, locates to the cytoplasm.

## 画像



Immunohistochemistry analysis of paraffin-embedded human breast carcinoma tissue using Bad (phospho S91) antibody (ab62211) at 1/50 dilution, in the presence (right) and absence (left) of immunising phosphopeptide.

**Please note:** All products are "FOR RESEARCH USE ONLY AND ARE NOT INTENDED FOR DIAGNOSTIC OR THERAPEUTIC USE"

**Our Abpromise to you: Quality guaranteed and expert technical support**

- Replacement or refund for products not performing as stated on the datasheet
- Valid for 12 months from date of delivery
- Response to your inquiry within 24 hours
  
- We provide support in Chinese, English, French, German, Japanese and Spanish
- Extensive multi-media technical resources to help you
- We investigate all quality concerns to ensure our products perform to the highest standards

If the product does not perform as described on this datasheet, we will offer a refund or replacement. For full details of the Abpromise, please visit <http://www.abcam.co.jp/abpromise> or contact our technical team.

### **Terms and conditions**

---

- Guarantee only valid for products bought direct from Abcam or one of our authorized distributors