


Product datasheet

Anti-TM9SF1 antibody ab62173

画像数 2

製品の概要

製品名	Anti-TM9SF1 antibody
製品の詳細	Rabbit polyclonal to TM9SF1
由来種	Rabbit
アプリケーション	適用あり: WB, ELISA, IHC-P
種交差性	交差種: Human 交差が予測される動物種: Mouse, Rat, Rabbit, Horse, Guinea pig, Cow, Cat, Dog, Pig 
免疫原	A region within synthetic peptide: SDRRRGDDGG FFPRTLEIHW LSIINSMVLV FLLVGFVAVI LMRVLRNDLA, corresponding to internal sequence amino acids 217-266 of Human TM9SF1 <a href="#">Run BLAST with ExPASy</a> <a href="#">Run BLAST with NCBI</a>
ポジティブ・コントロール	Jurkat Cell lysate. Human Kidney.

製品の特性

製品の状態	Liquid
保存方法	Shipped at 4°C. Upon delivery aliquot and store at -20°C or -80°C. Avoid repeated freeze / thaw cycles.
バッファー	Preservative: None Constituents: 2% Sucrose, PBS
精製度	Protein A purified
ポリ/モノ	ポリクローナル
アイソタイプ	IgG

アプリケーション

Our [Abpromise guarantee](#) covers the use of **ab62173** in the following tested applications.

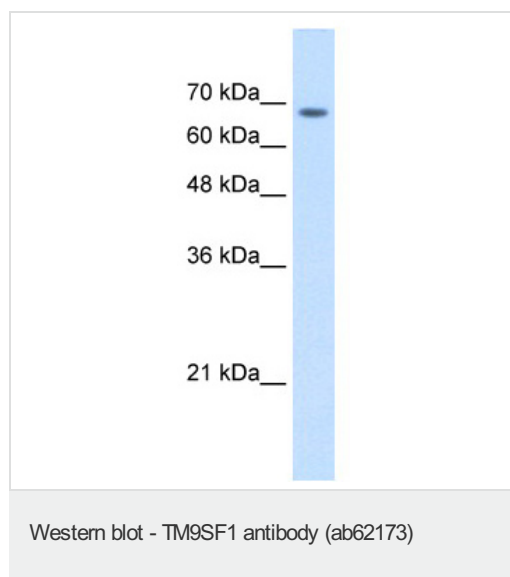
The application notes include recommended starting dilutions; optimal dilutions/concentrations should be determined by the end user.

アプリ ケーション	Abreviews	特記事項
WB		Use a concentration of 2.5 µg/ml. Detects a band of approximately 69 kDa (predicted molecular weight: 69 kDa). Good results were obtained when blocked with 5% non-fat dry milk in 0.05% PBS-T.
ELISA		Use at an assay dependent concentration. Titre using peptide based assay: 1/312500.
IHC-P		Use a concentration of 4 - 8 µg/ml.

## ターゲット情報

機能	Plays an essential role in autophagy.
組織特異性	Expressed in lung, pancreas, kidney, liver, placenta, skeletal muscle, heart and brain. The amount in skeletal muscle, heart and brain were considerably lower than in the other tissues.
配列類似性	Belongs to the nonaspanin (TM9SF) family.
細胞内局在	Lysosome membrane. Cytoplasmic vesicle > autophagosome membrane.

## 画像



Anti-TM9SF1 antibody (ab62173) at 2.5 µg/ml  
(in 5% skim milk / PBS buffer) + Jurkat cell  
lysate at 10 µg

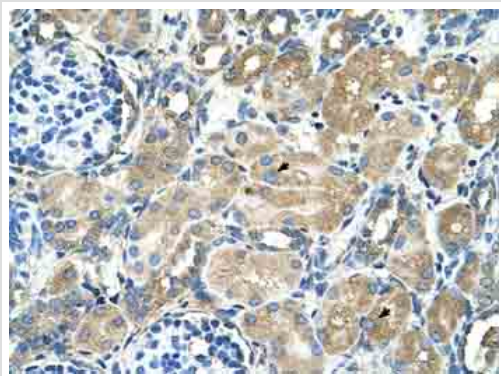
### Secondary

HRP conjugated anti-Rabbit IgG at 1/50000  
dilution

**Predicted band size:** 69 kDa

**Observed band size:** 69 kDa

Gel concentration: 12%



Immunohistochemistry (Formalin/PFA-fixed paraffin-embedded sections) analysis of human kidney tissue labelling TM9SF1 with ab62173 at 4-8µg/ml. Arrows indicate positively labelled epithelial cells of the renal tubule. Magnification: 400X.

Immunohistochemistry (Formalin/PFA-fixed paraffin-embedded sections) - TM9SF1 antibody (ab62173)

**Please note:** All products are "FOR RESEARCH USE ONLY AND ARE NOT INTENDED FOR DIAGNOSTIC OR THERAPEUTIC USE"

### **Our Abpromise to you: Quality guaranteed and expert technical support**

---

- Replacement or refund for products not performing as stated on the datasheet
- Valid for 12 months from date of delivery
- Response to your inquiry within 24 hours
  
- We provide support in Chinese, English, French, German, Japanese and Spanish
- Extensive multi-media technical resources to help you
- We investigate all quality concerns to ensure our products perform to the highest standards

If the product does not perform as described on this datasheet, we will offer a refund or replacement. For full details of the Abpromise, please visit <http://www.abcam.co.jp/abpromise> or contact our technical team.

### **Terms and conditions**

---

- Guarantee only valid for products bought direct from Abcam or one of our authorized distributors