

## Product datasheet

# Anti-PKC mu (phospho S910) antibody ab61787

### 画像数 1

#### 製品の概要

製品名	Anti-PKC mu (phospho S910) antibody
製品の詳細	Rabbit polyclonal to PKC mu (phospho S910)
由来種	Rabbit
特異性	ab61787 detects PKC mu only when phosphorylated at serine 910 (Human: Ser910; Mouse: Ser916; Rat: Ser647).
アプリケーション	<b>適用あり:</b> ELISA, WB
種交差性	<b>交差種:</b> Human <b>交差が予測される動物種:</b> Mouse, Rat
免疫原	Synthesized phosphopeptide derived from human PKC mu around the phosphorylation site of serine 910 (R-V-S <sup>P</sup> -I-L).
ポジティブ・コントロール	Extracts from A431 cells

#### 製品の特性

製品の状態	Liquid
保存方法	Shipped at 4°C. Upon delivery aliquot and store at -20°C. Avoid freeze / thaw cycles.
バッファー	Preservative: 0.02% Sodium Azide Constituents: 50% Glycerol, PBS, 150mM Sodium chloride, pH 7.4
精製度	Immunogen affinity purified
特記事項 (精製)	The antibody was affinity-purified from rabbit antiserum by affinity-chromatography using epitope-specific phosphopeptide. The antibody against non-phosphopeptide was removed by chromatography using non-phosphopeptide corresponding to the phosphorylation site.
ポリモノ	ポリクローナル
アイソタイプ	IgG

#### アプリケーション

Our [Abpromise guarantee](#) covers the use of **ab61787** in the following tested applications.

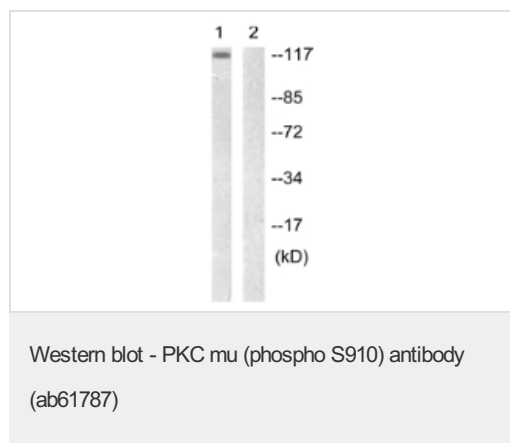
The application notes include recommended starting dilutions; optimal dilutions/concentrations should be determined by the end user.

アプリケーション	Abreviews	特記事項
ELISA		1/10000.
WB		1/500 - 1/1000. Detects a band of approximately 102 kDa (predicted molecular weight: 102 kDa).

## ターゲット情報

<b>機能</b>	Converts transient diacylglycerol (DAG) signals into prolonged physiological effects, downstream of PKC. Involved in resistance to oxidative stress through activation of NF-kappa-B.
<b>配列類似性</b>	Belongs to the protein kinase superfamily, CAMK Ser/Thr protein kinase family, PKD subfamily. Contains 1 PH domain. Contains 2 phorbol-ester/DAG-type zinc fingers. Contains 1 protein kinase domain.
<b>細胞内局在</b>	Cytoplasm. Membrane. Translocation to the cell membrane is required for kinase activation.

## 画像



**All lanes :** Anti-PKC mu (phospho S910) antibody (ab61787) at 1/500 dilution

**Lane 1 :** Extracts from A431 cells

**Lane 2 :** Extracts from A431 cells with immunising phosphopeptide

**Predicted band size:** 102 kDa

**Observed band size:** 102 kDa

**Please note:** All products are "FOR RESEARCH USE ONLY AND ARE NOT INTENDED FOR DIAGNOSTIC OR THERAPEUTIC USE"

## Our Abpromise to you: Quality guaranteed and expert technical support

- Replacement or refund for products not performing as stated on the datasheet
- Valid for 12 months from date of delivery
- Response to your inquiry within 24 hours
- We provide support in Chinese, English, French, German, Japanese and Spanish
- Extensive multi-media technical resources to help you
- We investigate all quality concerns to ensure our products perform to the highest standards

If the product does not perform as described on this datasheet, we will offer a refund or replacement. For full details of the Abpromise, please visit <http://www.abcam.co.jp/abpromise> or contact our technical team.

## Terms and conditions

---

- Guarantee only valid for products bought direct from Abcam or one of our authorized distributors