


Product datasheet

Anti-M6PR (cation independent) antibody ab61774

画像数 2

製品の概要

製品名	Anti-M6PR (cation independent) antibody
製品の詳細	Rabbit polyclonal to M6PR (cation independent)
由来種	Rabbit
特異性	ab61774 detects endogenous levels of total Mannose 6 Phosphate Receptor (Cation independent) protein.
アプリケーション	適用あり: IHC-P, ELISA, ICC/IF
種交差性	交差種: Human 交差が予測される動物種: Mouse 
免疫原	Synthetic non-phosphopeptide derived from human Mannose 6 Phosphate Receptor (Cation independent) around the phosphorylation site of serine 2484 (D-D-S-D-E).
ポジティブ・コントロール	Human lung carcinoma tissue, 293 cell extracts and HeLa cells.

製品の特性

製品の状態	Liquid
保存方法	Shipped at 4°C. Store at -20°C. Stable for 12 months at -20°C.
バッファー	Preservative: 0.02% Sodium Azide Constituents: 50% Glycerol, PBS (without Mg ²⁺ and Ca ²⁺), 150mM Sodium chloride, pH 7.4
精製度	Immunogen affinity purified
ポリモノ	ポリクローナル
アイソタイプ	IgG

アプリケーション

Our [Abpromise guarantee](#) covers the use of **ab61774** in the following tested applications.

The application notes include recommended starting dilutions; optimal dilutions/concentrations should be determined by the end user.

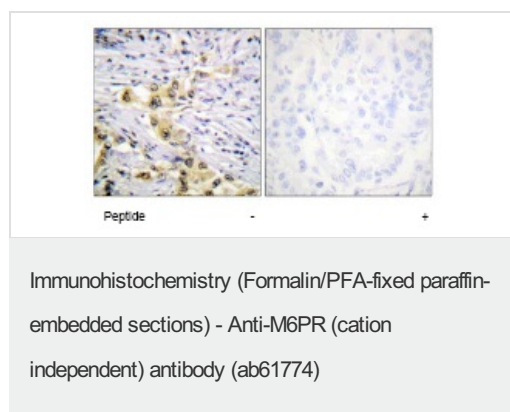
アプリケーション	Abreviews	特記事項
IHC-P		1/50 - 1/100.

アプリケーション	Abreviews	特記事項
ELISA		1/20000.
ICC/IF		1/500 - 1/1000.

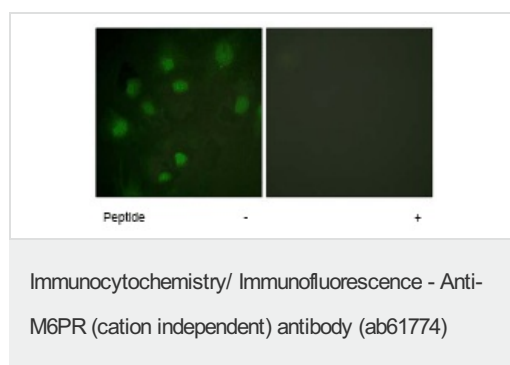
ターゲット情報

機能	Transport of phosphorylated lysosomal enzymes from the Golgi complex and the cell surface to lysosomes. Lysosomal enzymes bearing phosphomannosyl residues bind specifically to mannose-6-phosphate receptors in the Golgi apparatus and the resulting receptor-ligand complex is transported to an acidic prelysosomal compartment where the low pH mediates the dissociation of the complex. This receptor also binds IGF2. Acts as a positive regulator of T-cell coactivation, by binding DPP4.
配列類似性	Belongs to the MRL1/IGF2R family. Contains 1 fibronectin type-II domain.
ドメイン	Contains 15 repeating units of approximately 147 AA harboring four disulfide bonds each. The most highly conserved region within the repeat consists of a stretch of 13 AA that contains cysteines at both ends.
細胞内局在	Lysosome membrane. Colocalized with DPP4 in internalized cytoplasmic vesicles adjacent to the cell surface.

画像



ab61774 at 1/50 - 1/100 dilution staining Mannose 6 Phosphate (Cation independent) in human lung carcinoma by Immunohistochemistry, Paraffin-embedded tissue, in the absence or presence of the immunising peptide.



ab61774 at 1/500 - 1/1000 dilution staining Mannose 6 Phosphate Receptor (Cation independent) in HeLa cells by Immunofluorescence, in the absence or presence of the immunising peptide.

Our Abpromise to you: Quality guaranteed and expert technical support

- Replacement or refund for products not performing as stated on the datasheet
- Valid for 12 months from date of delivery
- Response to your inquiry within 24 hours

- We provide support in Chinese, English, French, German, Japanese and Spanish
- Extensive multi-media technical resources to help you
- We investigate all quality concerns to ensure our products perform to the highest standards

If the product does not perform as described on this datasheet, we will offer a refund or replacement. For full details of the Abpromise, please visit <http://www.abcam.co.jp/abpromise> or contact our technical team.

Terms and conditions

- Guarantee only valid for products bought direct from Abcam or one of our authorized distributors