

Product datasheet

Anti-Caspase-9 antibody ab61129

画像数 1

製品の概要

| | |
|--------------|--|
| 製品名 | Anti-Caspase-9 antibody |
| 製品の詳細 | Rabbit polyclonal to Caspase-9 |
| 由来種 | Rabbit |
| 特異性 | ab61129 detects endogenous levels of total Caspase-9 protein. |
| アプリケーション | 適用あり: ELISA, WB |
| 種交差性 | 交差種: Human |
| 免疫原 | Synthetic peptide corresponding to Human Caspase-9. Database link: P55211 |
| ポジティブ・コントロール | COS7 cell extracts treated with Etoposide (25uM, 24hours). |

製品の特性

| | |
|----------|---|
| 製品の状態 | Liquid |
| 保存方法 | Shipped at 4°C. Store at -20°C. Stable for 12 months at -20°C. |
| バッファー | Preservative: 0.02% Sodium Azide Constituents: 50% Glycerol, PBS (without Mg ²⁺ and Ca ²⁺), 150mM Sodium chloride, pH 7.4 |
| 精製度 | Immunogen affinity purified |
| 特記事項(精製) | ab61129 was affinity-purified from rabbit antiserum by affinity-chromatography using epitope-specific immunogen. |
| ポリ/モノ | ポリクローナル |
| アイソタイプ | IgG |

アプリケーション

Our [Abpromise guarantee](#) covers the use of **ab61129** in the following tested applications.

The application notes include recommended starting dilutions; optimal dilutions/concentrations should be determined by the end user.

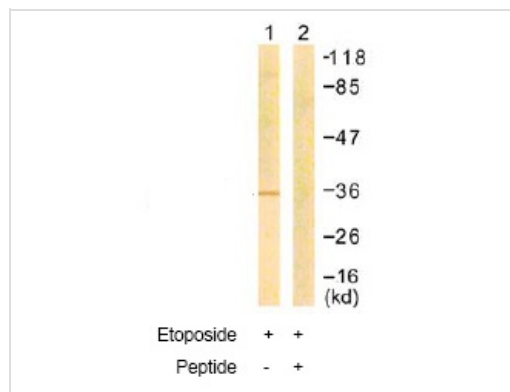
| アプリケーション | Abreviews | 特記事項 |
|----------|-----------|---------|
| ELISA | | 1/5000. |

| アプリケーション | Abreviews | 特記事項 |
|----------|-----------|--|
| WB | | 1/500 - 1/1000. Detects a band of approximately 35 kDa (predicted molecular weight: 46 kDa). |

ターゲット情報

| | |
|--------------|--|
| 機能 | Involved in the activation cascade of caspases responsible for apoptosis execution. Binding of caspase-9 to Apaf-1 leads to activation of the protease which then cleaves and activates caspase-3. Proteolytically cleaves poly(ADP-ribose) polymerase (PARP). Isoform 2 lacks activity is an dominant-negative inhibitor of caspase-9. |
| 組織特異性 | Ubiquitous, with highest expression in the heart, moderate expression in liver, skeletal muscle, and pancreas. Low levels in all other tissues. Within the heart, specifically expressed in myocytes. |
| 配列類似性 | Belongs to the peptidase C14A family. Contains 1 CARD domain. |
| 発生段階 | Expressed at low levels in fetal heart, at moderate levels in neonate heart, and at high levels in adult heart. |
| 翻訳後修飾 | Cleavages at Asp-315 by granzyme B and at Asp-330 by caspase-3 generate the two active subunits. Caspase-8 and -10 can also be involved in these processing events. |

画像



Western blot - Anti-Caspase-9 antibody (ab61129)

All lanes : Anti-Caspase-9 antibody (ab61129)

Lane 1 : COS7 cell extracts treated with Etoposide (25uM, 24hours)

Lane 2 : COS7 cell extracts treated with Etoposide (25uM, 24hours) with immunising peptide

Predicted band size: 46 kDa

Observed band size: 35 kDa

Please note: All products are "FOR RESEARCH USE ONLY AND ARE NOT INTENDED FOR DIAGNOSTIC OR THERAPEUTIC USE"

Our Abpromise to you: Quality guaranteed and expert technical support

- Replacement or refund for products not performing as stated on the datasheet
- Valid for 12 months from date of delivery
- Response to your inquiry within 24 hours

- We provide support in Chinese, English, French, German, Japanese and Spanish
- Extensive multi-media technical resources to help you
- We investigate all quality concerns to ensure our products perform to the highest standards

If the product does not perform as described on this datasheet, we will offer a refund or replacement. For full details of the Abpromise, please visit <http://www.abcam.co.jp/abpromise> or contact our technical team.

Terms and conditions

- Guarantee only valid for products bought direct from Abcam or one of our authorized distributors