


Product datasheet

Anti-Doublecortin antibody ab61121

1 Abreviews 画像数 1

製品の概要

製品名	Anti-Doublecortin antibody
製品の詳細	Rabbit polyclonal to Doublecortin
由来種	Rabbit
特異性	ab61121 antibody detects endogenous levels of total Doublecortin protein.
アプリケーション	適用あり: WB, ELISA
種交差性	交差種: Mouse, Human 交差が予測される動物種: Rat 
免疫原	Synthetic non-phosphopeptide derived from Human Doublecortin (isoforms 2-5 inclusive, Swiss-Prot O43602) from around the phosphorylation site of serine 297 (A-K-S <sup>P</sup> -P-G).
ポジティブ・コントロール	Extracts from RAW264.7 cells.

製品の特性

製品の状態	Liquid
保存方法	Shipped at 4°C. Store at -20°C. Stable for 12 months at -20°C.
バッファー	Preservative: 0.02% Sodium Azide Constituents: 50% Glycerol, PBS, 150mM Sodium chloride, pH 7.4
精製度	Immunogen affinity purified
ポリ/モノ	ポリクローナル
アイソタイプ	IgG

アプリケーション

Our [Abpromise guarantee](#) covers the use of **ab61121** in the following tested applications.

The application notes include recommended starting dilutions; optimal dilutions/concentrations should be determined by the end user.

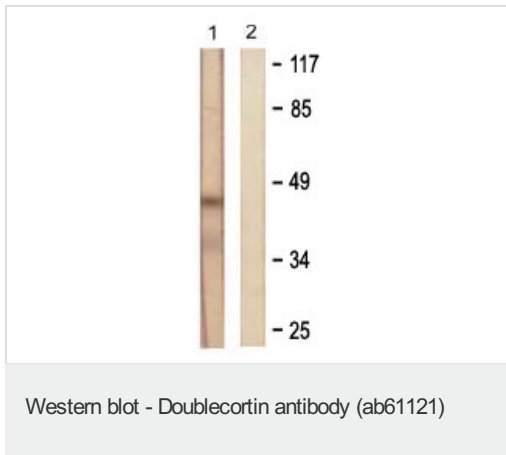
アプリケーション	Abreviews	特記事項
WB		1/500 - 1/1000. Detects a band of approximately 45 kDa (predicted molecular weight: 43-45 kDa).

アプリケーション	Abreviews	特記事項
ELISA		1/10000.

## ターゲット情報

機能	Seems to be required for initial steps of neuronal dispersion and cortex lamination during cerebral cortex development. May act by competing with the putative neuronal protein kinase DCAMKL1 in binding to a target protein. May in that way participate in a signaling pathway that is crucial for neuronal interaction before and during migration, possibly as part of a calcium ion-dependent signal transduction pathway. May be part with LIS-1 of an overlapping, but distinct, signaling pathways that promote neuronal migration.
組織特異性	Highly expressed in neuronal cells of fetal brain (in the majority of cells of the cortical plate, intermediate zone and ventricular zone), but not expressed in other fetal tissues. In the adult, highly expressed in the brain frontal lobe, but very low expression in other regions of brain, and not detected in heart, placenta, lung, liver, skeletal muscles, kidney and pancreas.
関連疾患	<p>Defects in DCX are the cause of lissencephaly X-linked type 1 (LISX1) [MIM:300067]; also called X-LIS or LIS. LISX1 is a classic lissencephaly characterized by mental retardation and seizures that are more severe in male patients. Affected boys show an abnormally thick cortex with absent or severely reduced gyri. Clinical manifestations include feeding problems, abnormal muscular tone, seizures and severe to profound psychomotor retardation. Female patients display a less severe phenotype referred to as 'doublecortex'.</p> <p>Defects in DCX are the cause of subcortical band heterotopia X-linked (SBHX) [MIM:300067]; also known as double cortex or subcortical laminar heterotopia (SCLH). SBHX is a mild brain malformation of the lissencephaly spectrum. It is characterized by bilateral and symmetric plates or bands of gray matter found in the central white matter between the cortex and cerebral ventricles, cerebral convolutions usually appearing normal.</p> <p>Note=A chromosomal aberration involving DCX is found in lissencephaly. Translocation t(X;2)(q22.3;p25.1).</p>
配列類似性	Contains 2 doublecortin domains.
細胞内局在	Cytoplasm.

## 画像



**All lanes :** Anti-Doublecortin antibody (ab61121) at 1/500 dilution

**Lane 1 :** Extracts from RAW264.7 cells

**Lane 2 :** Extracts from RAW264.7 cells with immunising Doublecortin peptide at 5 µg

Lysates/proteins at 5 µg per lane.

**Predicted band size:** 43-45 kDa

**Observed band size:** 45 kDa

**Please note:** All products are "FOR RESEARCH USE ONLY AND ARE NOT INTENDED FOR DIAGNOSTIC OR THERAPEUTIC USE"

### Our Abpromise to you: Quality guaranteed and expert technical support

- Replacement or refund for products not performing as stated on the datasheet
- Valid for 12 months from date of delivery
- Response to your inquiry within 24 hours
- We provide support in Chinese, English, French, German, Japanese and Spanish
- Extensive multi-media technical resources to help you
- We investigate all quality concerns to ensure our products perform to the highest standards

If the product does not perform as described on this datasheet, we will offer a refund or replacement. For full details of the Abpromise, please visit <http://www.abcam.co.jp/abpromise> or contact our technical team.

### Terms and conditions

- Guarantee only valid for products bought direct from Abcam or one of our authorized distributors