

Product datasheet

Anti-PSG6 antibody ab60340

画像数 1

製品の概要

製品名	Anti-PSG6 antibody
製品の詳細	Rabbit polyclonal to PSG6
由来種	Rabbit
アプリケーション	適用あり: WB, ELISA
種交差性	交差種: Human 交差が予測される動物種: Mouse, Rat, Guinea pig
免疫原	A region within synthetic peptide: VLLLVHNLQP NLTGYWYKG QMTDLYHYIT SYVVHGQIY GPAYSGRETV, corresponding to amino acids 51-100 of Human PSG6 Run BLAST with ExPASy Run BLAST with NCBI
ポジティブ・コントロール	HepG2 cell lysate

製品の特性

製品の状態	Liquid
保存方法	Shipped at 4°C. Upon delivery aliquot and store at -20°C. Avoid freeze / thaw cycles.
バッファー	Preservative: None Constituents: 2% Sucrose, PBS
精製度	Immunogen affinity purified
ポリ/モノ	ポリクローナル
アイソタイプ	IgG

アプリケーション

Our [Abpromise guarantee](#) covers the use of **ab60340** in the following tested applications.

The application notes include recommended starting dilutions; optimal dilutions/concentrations should be determined by the end user.

アプリケーション	Abreviews	特記事項

アプリ ケーション	Abreviews	特記事項
--------------	-----------	------

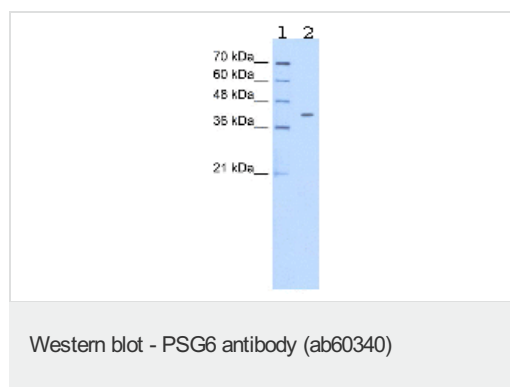
WB Use a concentration of 0.5 µg/ml. Detects a band of approximately 49 kDa (predicted molecular weight: 49 kDa). Good results were obtained when blocked with 5% non-fat dry milk in 0.05% PBS-T.

ELISA Use at an assay dependent concentration.
ELISA titre using peptide based assay: 1:312500.

ターゲット情報

配列類似性	Belongs to the immunoglobulin superfamily. CEA family. Contains 3 Ig-like C2-type (immunoglobulin-like) domains. Contains 1 Ig-like V-type (immunoglobulin-like) domain.
発生段階	PSBG are produced in high quantity during pregnancy.
細胞内局在	Secreted.

画像



All lanes : Anti-PSG6 antibody (ab60340) at 0.5 µg/ml

Lane 1 : Molecular weight marker

Lane 2 : HepG2 cell lysate at 10 µg

Secondary

All lanes : HRP conjugated anti-Rabbit IgG at 1/50000 dilution

Predicted band size: 49 kDa

Observed band size: 49 kDa

Gel concentration: 12%

Please note: All products are "FOR RESEARCH USE ONLY AND ARE NOT INTENDED FOR DIAGNOSTIC OR THERAPEUTIC USE"

Our Abpromise to you: Quality guaranteed and expert technical support

- Replacement or refund for products not performing as stated on the datasheet
- Valid for 12 months from date of delivery

- Response to your inquiry within 24 hours
- We provide support in Chinese, English, French, German, Japanese and Spanish
- Extensive multi-media technical resources to help you
- We investigate all quality concerns to ensure our products perform to the highest standards

If the product does not perform as described on this datasheet, we will offer a refund or replacement. For full details of the Abpromise, please visit <http://www.abcam.co.jp/abpromise> or contact our technical team.

Terms and conditions

- Guarantee only valid for products bought direct from Abcam or one of our authorized distributors