

Product datasheet

Anti-CTDSP2 antibody ab60235

画像数 1

製品の概要

製品名	Anti-CTDSP2 antibody
製品の詳細	Rabbit polyclonal to CTDSP2
由来種	Rabbit
アプリケーション	適用あり: ELISA, IHC-P
種交差性	交差種: Human
免疫原	KLH conjugated synthetic peptide selected from the N-terminal region of human CTDSP2.
ポジティブ・コントロール	Human breast carcinoma tissue.

製品の特性

製品の状態	Liquid
保存方法	Shipped at 4°C. Store at +4°C short term (1-2 weeks). Upon delivery aliquot. Store at -20°C or -80°C. Avoid freeze / thaw cycle.
バッファー	Preservative: 0.09% Sodium Azide Constituents: PBS
精製度	Ammonium Sulphate Precipitation
特記事項 (精製)	This antibody is prepared by Saturated Ammonium Sulfate (SAS) precipitation followed by dialysis against PBS.
ポリ/モノ	ポリクローナル
アイソタイプ	IgG

アプリケーション

Our [Abpromise guarantee](#) covers the use of **ab60235** in the following tested applications.

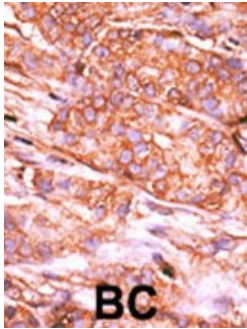
The application notes include recommended starting dilutions; optimal dilutions/concentrations should be determined by the end user.

アプリケーション	Abreviews	特記事項
ELISA		1/1000.
IHC-P		1/50 - 1/100.

ターゲット情報

機能	Preferentially catalyzes the dephosphorylation of 'Ser-5' within the tandem 7 residues repeats in the C-terminal domain (CTD) of the largest RNA polymerase II subunit POLR2A. Negatively regulates RNA polymerase II transcription, possibly by controlling the transition from initiation/capping to processive transcript elongation. Recruited by REST to neuronal genes that contain RE-1 elements, leading to neuronal gene silencing in non-neuronal cells. May contribute to the development of sarcomas.
組織特異性	Expression is restricted to non-neuronal tissues. Highest expression in pancreas and lowest in liver.
配列類似性	Contains 1 FCP1 homology domain.
細胞内局在	Nucleus.

画像



Immunohistochemistry (Formalin/PFA-fixed paraffin-embedded sections) - CTDSP2 antibody (ab60235)

Ab60235 (1/50-1/100) staining human CTDSP2 in human breast carcinoma tissue by immunohistochemistry using formalin fixed, paraffin embedded tissue.

Formalin-fixed and paraffin-embedded human cancer tissue reacted with the primary antibody, which was peroxidase-conjugated to the secondary antibody, followed by AEC staining.

BC = breast carcinoma tissue.

Please note: All products are "FOR RESEARCH USE ONLY AND ARE NOT INTENDED FOR DIAGNOSTIC OR THERAPEUTIC USE"

Our Abpromise to you: Quality guaranteed and expert technical support

- Replacement or refund for products not performing as stated on the datasheet
- Valid for 12 months from date of delivery
- Response to your inquiry within 24 hours
- We provide support in Chinese, English, French, German, Japanese and Spanish
- Extensive multi-media technical resources to help you
- We investigate all quality concerns to ensure our products perform to the highest standards

If the product does not perform as described on this datasheet, we will offer a refund or replacement. For full details of the Abpromise, please visit <http://www.abcam.co.jp/abpromise> or contact our technical team.

Terms and conditions

- Guarantee only valid for products bought direct from Abcam or one of our authorized distributors