


Product datasheet

Anti-Catalase (phospho Y385) antibody ab59429

画像数 1

製品の概要

製品名	Anti-Catalase (phospho Y385) antibody
製品の詳細	Rabbit polyclonal to Catalase (phospho Y385)
由来種	Rabbit
特異性	ab59429 detects endogenous levels of Catalase only when phosphorylated at tyrosine 385.
アプリケーション	適用あり: ELISA, IHC-P
種交差性	交差種: Human 交差が予測される動物種: Mouse, Rat 
免疫原	Synthetic phosphopeptide derived from human Catalase around the phosphorylation site of tyrosine 385 (A-N-Y ^P -Q-R). Run BLAST with Run BLAST with
ポジティブ・コントロール	Human brain tissue

製品の特性

製品の状態	Liquid
保存方法	Shipped at 4°C. Store at -20°C. Stable for 12 months at -20°C.
バッファー	Preservative: 0.02% Sodium Azide Constituents: 50% Glycerol, PBS, 150mM Sodium chloride, pH 7.4
精製度	Immunogen affinity purified
特記事項 (精製)	ab59429 was purified by affinity chromatography using epitope specific phosphopeptide. The antibody against non phosphopeptide was removed by chromatography using non phosphopeptide corresponding to the phosphorylation site.
ポリ/モノ	ポリクローナル
アイソタイプ	IgG

アプリケーション

Our [Abpromise guarantee](#) covers the use of **ab59429** in the following tested applications.

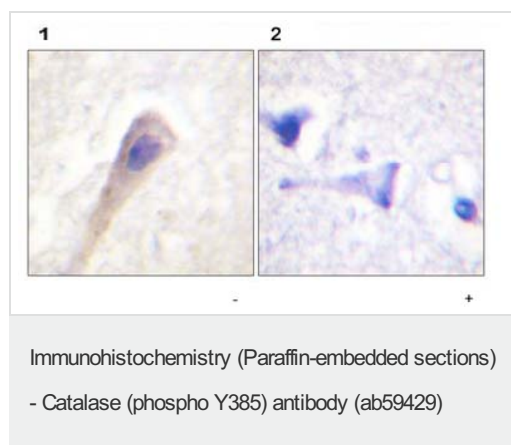
The application notes include recommended starting dilutions; optimal dilutions/concentrations should be determined by the end user.

アプリケーション	Abreviews	特記事項
ELISA		1/20000.
IHC-P		Use at an assay dependent concentration.

ターゲット情報

機能	Occurs in almost all aerobically respiring organisms and serves to protect cells from the toxic effects of hydrogen peroxide. Promotes growth of cells including T-cells, B-cells, myeloid leukemia cells, melanoma cells, mastocytoma cells and normal and transformed fibroblast cells.
関連疾患	Defects in CAT are the cause of acatalasia (ACATLAS) [MIM:115500]; also known as acatalasemia. This disease is characterized by absence of catalase activity in red cells and is often associated with ulcerating oral lesions.
配列類似性	Belongs to the catalase family.
翻訳後修飾	The N-terminus is blocked.
細胞内局在	Peroxisome.

画像



ab59429, at a 1/50 dilution, staining Catalase in paraffin embedded human brain tissue by Immunohistochemistry in the absence (left image) or presence (right image) of the phosphopeptide.

Please note: All products are "FOR RESEARCH USE ONLY AND ARE NOT INTENDED FOR DIAGNOSTIC OR THERAPEUTIC USE"

Our Abpromise to you: Quality guaranteed and expert technical support

- Replacement or refund for products not performing as stated on the datasheet
- Valid for 12 months from date of delivery
- Response to your inquiry within 24 hours
- We provide support in Chinese, English, French, German, Japanese and Spanish
- Extensive multi-media technical resources to help you
- We investigate all quality concerns to ensure our products perform to the highest standards

If the product does not perform as described on this datasheet, we will offer a refund or replacement. For full details of the Abpromise,

please visit <http://www.abcam.co.jp/abpromise> or contact our technical team.

Terms and conditions

- Guarantee only valid for products bought direct from Abcam or one of our authorized distributors