


Product datasheet

Anti-Bcl-XL (phospho T47) antibody ab59402

画像数 2

製品の概要

製品名	Anti-Bcl-XL (phospho T47) antibody
製品の詳細	Rabbit polyclonal to Bcl-XL (phospho T47)
由来種	Rabbit
特異性	This antibody detects endogenous levels of BCL-XL only when phosphorylated at threonine 47.
アプリケーション	適用あり: ELISA, WB, IHC-P
種交差性	交差種: Human 交差が予測される動物種: Mouse, Rat 
免疫原	Synthetic peptide corresponding to Human Bcl-XL. Database link: Q07817
ポジティブ・コントロール	Human lung carcinoma tissue; UV treated 293 cell extracts

製品の特性

製品の状態	Liquid
保存方法	Shipped at 4°C. Store at +4°C short term (1-2 weeks). Upon delivery aliquot. Store at -20°C. Avoid freeze / thaw cycle.
バッファー	Preservative: 0.02% Sodium Azide Constituents: 50% Glycerol, PBS, 150mM Sodium chloride, pH 7.4
精製度	Protein A purified
特記事項(精製)	The antibody against non-phosphopeptide was removed by chromatography using non-phosphopeptide corresponding to the phosphorylation site.
ポリ/モノ	ポリクローナル
アイソタイプ	IgG

アプリケーション

Our [Abpromise guarantee](#) covers the use of **ab59402** in the following tested applications.

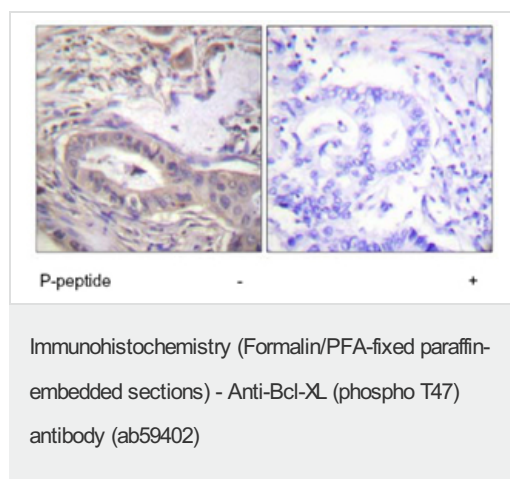
The application notes include recommended starting dilutions; optimal dilutions/concentrations should be determined by the end user.

アプリケーション	Abreviews	特記事項
ELISA		1/40000.
WB		1/500 - 1/1000. Detects a band of approximately 26 kDa (predicted molecular weight: 26 kDa).
IHC-P		Use at an assay dependent concentration.

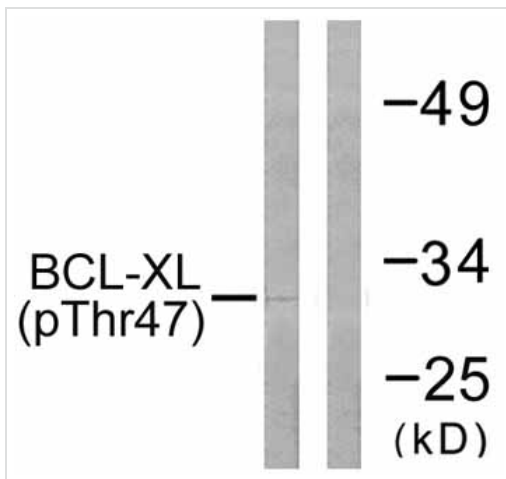
ターゲット情報

機能	Potent inhibitor of cell death. Inhibits activation of caspases (By similarity). Appears to regulate cell death by blocking the voltage-dependent anion channel (VDAC) by binding to it and preventing the release of the caspase activator, CYC1, from the mitochondrial membrane. Isoform Bcl-X(S) promotes apoptosis.
組織特異性	Bcl-X(S) is expressed at high levels in cells that undergo a high rate of turnover, such as developing lymphocytes. In contrast, Bcl-X(L) is found in tissues containing long-lived postmitotic cells, such as adult brain.
配列類似性	Belongs to the Bcl-2 family.
ドメイン	The BH4 motif is required for anti-apoptotic activity. The BH1 and BH2 motifs are required for both heterodimerization with other Bcl-2 family members and for repression of cell death.
翻訳後修飾	Proteolytically cleaved by caspases during apoptosis. The cleaved protein, lacking the BH4 motif, has pro-apoptotic activity.
細胞内局在	Mitochondrion membrane. Nucleus membrane. Mitochondrial membranes and perinuclear envelope.

画像



Immunohistochemical analysis of paraffin embedded human lung carcinoma tissue using ab59402 at 1/50 dilution, in the presence (right) and absence (left) of immunising phosphopeptide.



Western blot - Anti-Bcl-XL (phospho T47) antibody (ab59402)

All lanes : Anti-Bcl-XL (phospho T47) antibody (ab59402) at 1/500 dilution

Lane 1 : UV treated (30 mins) 293 cell extracts

Lane 2 : UV treated (30 mins) 293 cell extracts with the immunising phosphopeptide

Predicted band size: 26 kDa

Observed band size: 26 kDa

Please note: All products are "FOR RESEARCH USE ONLY AND ARE NOT INTENDED FOR DIAGNOSTIC OR THERAPEUTIC USE"

Our Abpromise to you: Quality guaranteed and expert technical support

- Replacement or refund for products not performing as stated on the datasheet
- Valid for 12 months from date of delivery
- Response to your inquiry within 24 hours
- We provide support in Chinese, English, French, German, Japanese and Spanish
- Extensive multi-media technical resources to help you
- We investigate all quality concerns to ensure our products perform to the highest standards

If the product does not perform as described on this datasheet, we will offer a refund or replacement. For full details of the Abpromise, please visit <http://www.abcam.co.jp/abpromise> or contact our technical team.

Terms and conditions

- Guarantee only valid for products bought direct from Abcam or one of our authorized distributors