

Product datasheet

Anti-MEK1 (phospho T286) antibody ab59329

1 References 画像数 2

製品の概要

製品名	Anti-MEK1 (phospho T286) antibody
製品の詳細	Rabbit polyclonal to MEK1 (phospho T286)
由来種	Rabbit
特異性	Detects endogenous levels of MEK1 only when phosphorylated at threonine 286.
アプリケーション	適用あり: ELISA, IHC-P
種交差性	交差種: Human 交差が予測される動物種: Mouse, Rat ▲
免疫原	Synthesized phosphopeptide derived from human MEK1 around the phosphorylation site of threonine 286 (A-E-T <sup>P</sup> -P-P)
ポジティブ・コントロール	Human breast carcinoma

製品の特性

製品の状態	Liquid
保存方法	Shipped at 4°C. Upon delivery aliquot and store at -20°C. Avoid freeze / thaw cycles.
バッファー	Preservative: 0.02% Sodium Azide Constituents: 50% Glycerol, PBS, 150mM Sodium chloride, pH 7.4
精製度	Immunogen affinity purified
特記事項(精製)	Affinity-purified from rabbit antiserum by affinity-chromatography using epitope-specific phosphopeptide. The antibody against non-phosphopeptide was removed by chromatography using non-phosphopeptide corresponding to the phosphorylation site.
ポリ/モノ	ポリクローナル
アイソタイプ	IgG

アプリケーション

Our [Abpromise guarantee](#) covers the use of **ab59329** in the following tested applications.

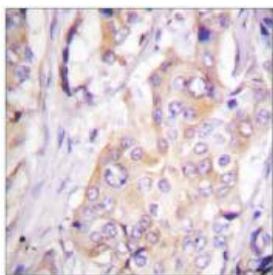
The application notes include recommended starting dilutions; optimal dilutions/concentrations should be determined by the end user.

アプリケーション	Abreviews	特記事項
ELISA		1/40000.
IHC-P		Use at an assay dependent concentration.

## ターゲット情報

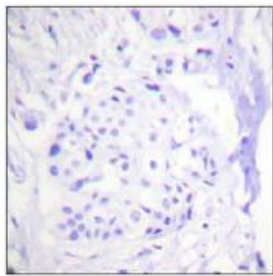
<b>機能</b>	Catalyzes the concomitant phosphorylation of a threonine and a tyrosine residue in a Thr-Glu-Tyr sequence located in MAP kinases. Activates ERK1 and ERK2 MAP kinases.
<b>組織特異性</b>	Widely expressed, with extremely low levels in brain.
<b>関連疾患</b>	Defects in MAP2K1 are a cause of cardiofaciocutaneous syndrome (CFC syndrome) [MIM:115150]; also known as cardio-facio-cutaneous syndrome. CFC syndrome is characterized by a distinctive facial appearance, heart defects and mental retardation. Heart defects include pulmonic stenosis, atrial septal defects and hypertrophic cardiomyopathy. Some affected individuals present with ectodermal abnormalities such as sparse, friable hair, hyperkeratotic skin lesions and a generalized ichthyosis-like condition. Typical facial features are similar to Noonan syndrome. They include high forehead with bitemporal constriction, hypoplastic supraorbital ridges, downslanting palpebral fissures, a depressed nasal bridge, and posteriorly angulated ears with prominent helices. The inheritance of CFC syndrome is autosomal dominant.
<b>配列類似性</b>	Belongs to the protein kinase superfamily. STE Ser/Thr protein kinase family. MAP kinase kinase subfamily. Contains 1 protein kinase domain.
<b>翻訳後修飾</b>	Phosphorylation on Ser/Thr by MAP kinase kinase kinases (RAF or MEKK1) regulates positively the kinase activity. Acetylation by Yersinia yopJ prevents phosphorylation and activation, thus blocking the MAPK signaling pathway.

## 画像



1/50-1/100 ab59329 staining MEK1 (phospho T286) in Human breast carcinoma tissue

Immunohistochemistry paraffin embedded sections -  
Anti-MEK1 (phospho T286) antibody (ab59329)



1/50-1/100 ab59329, staining MEK1 (phospho T286) in Human breast carcinoma tissue in the presence of the immunizing phosphopeptide.

Immunohistochemistry paraffin embedded sections -  
Anti-MEK1 (phospho T286) antibody (ab59329)

**Please note:** All products are "FOR RESEARCH USE ONLY AND ARE NOT INTENDED FOR DIAGNOSTIC OR THERAPEUTIC USE"

### Our Abpromise to you: Quality guaranteed and expert technical support

- Replacement or refund for products not performing as stated on the datasheet
- Valid for 12 months from date of delivery
- Response to your inquiry within 24 hours
- We provide support in Chinese, English, French, German, Japanese and Spanish
- Extensive multi-media technical resources to help you
- We investigate all quality concerns to ensure our products perform to the highest standards

If the product does not perform as described on this datasheet, we will offer a refund or replacement. For full details of the Abpromise, please visit <http://www.abcam.co.jp/abpromise> or contact our technical team.

### Terms and conditions

- Guarantee only valid for products bought direct from Abcam or one of our authorized distributors