

Product datasheet

Anti-PLCG 2 (phospho Y1217) antibody ab59221

画像数 1

製品の概要

製品名	Anti-PLCG 2 (phospho Y1217) antibody
製品の詳細	Rabbit polyclonal to PLCG 2 (phospho Y1217)
由来種	Rabbit
特異性	ab59221 detects endogenous levels of PLCG 2 only when phosphorylated at tyrosine 1217.
アプリケーション	適用あり: ELISA, IHC-P
種交差性	交差種: Human 交差が予測される動物種: Mouse, Rat ▲
免疫原	Synthetic phosphopeptide derived from human PLCG 2 around the phosphorylation site of tyrosine 1217 (L-F-L-Y ^P -D-T).
ポジティブ・コントロール	Human brain tissue.

製品の特性

製品の状態	Liquid
保存方法	Shipped at 4°C. Store at -20°C. Stable for 12 months at -20°C.
バッファー	Preservative: 0.02% Sodium Azide Constituents: 50% Glycerol, PBS (without Mg ²⁺ and Ca ²⁺), 150mM Sodium chloride, pH 7.4
精製度	Immunogen affinity purified
特記事項 (精製)	ab59221 was affinity-purified from rabbit antiserum by affinity-chromatography using epitope-specific phosphopeptide. The antibody against non-phosphopeptide was removed by chromatography using non-phosphopeptide corresponding to the phosphorylation site.
ポリ/モノ	ポリクローナル
アイソタイプ	IgG

アプリケーション

Our [Abpromise guarantee](#) covers the use of **ab59221** in the following tested applications.

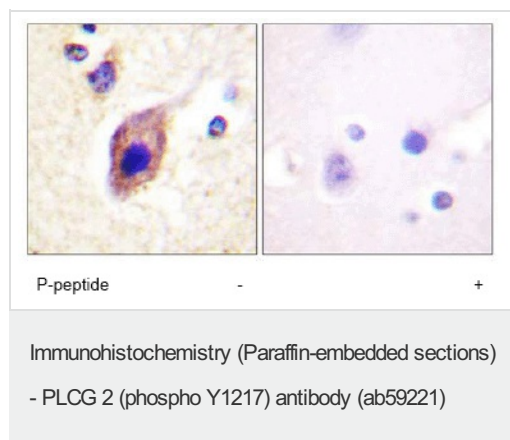
The application notes include recommended starting dilutions; optimal dilutions/concentrations should be determined by the end user.

アプリケーション	Abreviews	特記事項
ELISA		1/5000.
IHC-P		1/50 - 1/100.

ターゲット情報

機能	The production of the second messenger molecules diacylglycerol (DAG) and inositol 1,4,5-trisphosphate (IP3) is mediated by activated phosphatidylinositol-specific phospholipase C enzymes. It is a crucial enzyme in transmembrane signaling.
配列類似性	<p>Contains 1 C2 domain.</p> <p>Contains 1 PH domain.</p> <p>Contains 1 PI-PLC X-box domain.</p> <p>Contains 1 PI-PLC Y-box domain.</p> <p>Contains 2 SH2 domains.</p> <p>Contains 1 SH3 domain.</p>
翻訳後修飾	Phosphorylated on tyrosine residues; upon ligand-induced activation of a variety of growth factor receptors and immune system receptors. Increases phospholipase activity.

画像



ab59221 (1/100 dilution) staining PLCG 2 in human brain tissue by Immunohistochemistry (Paraffin section); in the absence or presence of the immunising peptide.

Please note: All products are "FOR RESEARCH USE ONLY AND ARE NOT INTENDED FOR DIAGNOSTIC OR THERAPEUTIC USE"

Our Abpromise to you: Quality guaranteed and expert technical support

- Replacement or refund for products not performing as stated on the datasheet
- Valid for 12 months from date of delivery
- Response to your inquiry within 24 hours
- We provide support in Chinese, English, French, German, Japanese and Spanish
- Extensive multi-media technical resources to help you
- We investigate all quality concerns to ensure our products perform to the highest standards

If the product does not perform as described on this datasheet, we will offer a refund or replacement. For full details of the Abpromise, please visit <http://www.abcam.co.jp/abpromise> or contact our technical team.

Terms and conditions

- Guarantee only valid for products bought direct from Abcam or one of our authorized distributors