

Product datasheet

Anti-IKK beta antibody ab59219

画像数 1

製品の概要

製品名	Anti-IKK beta antibody
製品の詳細	Rabbit polyclonal to IKK beta
由来種	Rabbit
特異性	ab59219 detects endogenous levels of total IKK beta.
アプリケーション	適用あり: ELISA, IHC-P
種交差性	交差種: Human 交差が予測される動物種: Mouse, Rat
免疫原	Synthetic non-phosphopeptide derived from human IKK beta around the phosphorylation site of tyrosine 199 (Q-K-Y ^P -T-V).
ポジティブ・コントロール	Human breast carcinoma tissue.

製品の特性

製品の状態	Liquid
保存方法	Shipped at 4°C. Store at -20°C. Stable for 12 months at -20°C.
バッファー	Preservative: 0.02% Sodium Azide Constituents: 50% Glycerol, PBS (without Mg ²⁺ and Ca ²⁺), 150mM Sodium chloride, pH 7.4
精製度	Immunogen affinity purified
ポリ/モノ	ポリクローナル
アイソタイプ	IgG

アプリケーション

Our [Abpromise guarantee](#) covers the use of **ab59219** in the following tested applications.

The application notes include recommended starting dilutions; optimal dilutions/concentrations should be determined by the end user.

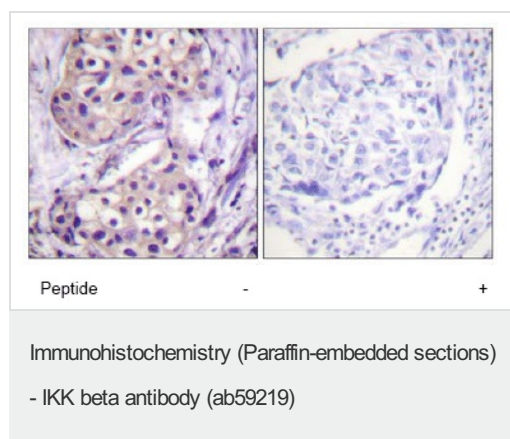
アプリケーション	Abreviews	特記事項
ELISA		1/10000.

アプリケーション	Abreviews	特記事項
IHC-P		1/50 - 1/100.

ターゲット情報

機能	Acts as part of the IKK complex in the conventional pathway of NF-kappa-B activation and phosphorylates inhibitors of NF-kappa-B thus leading to the dissociation of the inhibitor/NF-kappa-B complex and ultimately the degradation of the inhibitor. Also phosphorylates NCOA3.
組織特異性	Highly expressed in heart, placenta, skeletal muscle, kidney, pancreas, spleen, thymus, prostate, testis and peripheral blood.
配列類似性	Belongs to the protein kinase superfamily. Ser/Thr protein kinase family. Ikappa-B kinase subfamily. Contains 1 protein kinase domain.
翻訳後修飾	Upon cytokine stimulation, phosphorylated on Ser-177 and Ser-181 by MEKK1 and/or MAP3K14/NIK; which enhances activity. Once activated, autophosphorylates on the C-terminal serine cluster; which decreases activity and prevents prolonged activation of the inflammatory response. Acetylation of Thr-180 by Yersinia yopJ prevents phosphorylation and activation, thus blocking the Ikappa-B pathway. Ubiquitinated. Monoubiquitination involves TRIM21 that leads to inhibition of Tax-induced NF-kappa-B signaling. According to PubMed:19675099, 'Ser-163' does not serve as a monoubiquitination site. According to PubMed:16267042, ubiquitination on 'Ser-163' modulates phosphorylation on C-terminal serine residues. Monoubiquitination by TRIM21 is disrupted by Yersinia yopJ.
細胞内局在	Cytoplasm. Membrane raft. Colocalized with DPP4 in membrane rafts.

画像



ab59219 at 1/50 dilution staining IKK beta in human breast carcinoma by immunohistochemistry on paraffin embedded tissue, in the absence (left) or presence (right) of the immunising peptide.

Please note: All products are "FOR RESEARCH USE ONLY AND ARE NOT INTENDED FOR DIAGNOSTIC OR THERAPEUTIC USE"

Our Abpromise to you: Quality guaranteed and expert technical support

- Replacement or refund for products not performing as stated on the datasheet
- Valid for 12 months from date of delivery
- Response to your inquiry within 24 hours

- We provide support in Chinese, English, French, German, Japanese and Spanish
- Extensive multi-media technical resources to help you
- We investigate all quality concerns to ensure our products perform to the highest standards

If the product does not perform as described on this datasheet, we will offer a refund or replacement. For full details of the Abpromise, please visit <http://www.abcam.co.jp/abpromise> or contact our technical team.

Terms and conditions

- Guarantee only valid for products bought direct from Abcam or one of our authorized distributors