

## Product datasheet

# Anti-UBC6e antibody ab59014

画像数 3

### 製品の概要

製品名	Anti-UBC6e antibody
製品の詳細	Rabbit polyclonal to UBC6e
由来種	Rabbit
アプリケーション	適用あり: WB, IHC-P
種交差性	交差種: Human 交差が予測される動物種: Mouse, Rat, Rabbit, Chicken, Guinea pig, Cat, Pig, Zebrafish
免疫原	A region within synthetic peptide: METRYNLKSP AVKRLMKEAA ELKDPTDHYH AQPLEDNLF E WHFTVRGPPD, corresponding to N terminal amino acids 1-50 of Human UBC6e <a href="#">Run BLAST with ExPASy</a> <a href="#">Run BLAST with NCBI</a>
ポジティブ・コントロール	Jurkat cell lysate, Human lung tissue, Human kidney tissue.

### 製品の特性

製品の状態	Liquid
保存方法	Shipped at 4°C. Upon delivery aliquot and store at -20°C. Avoid freeze / thaw cycles.
バッファー	Preservative: None Constituents: 2% Sucrose, PBS
精製度	Protein A purified
ポリ/モノ	ポリクローナル
アイソタイプ	IgG

### アプリケーション

Our [Abpromise guarantee](#) covers the use of **ab59014** in the following tested applications.

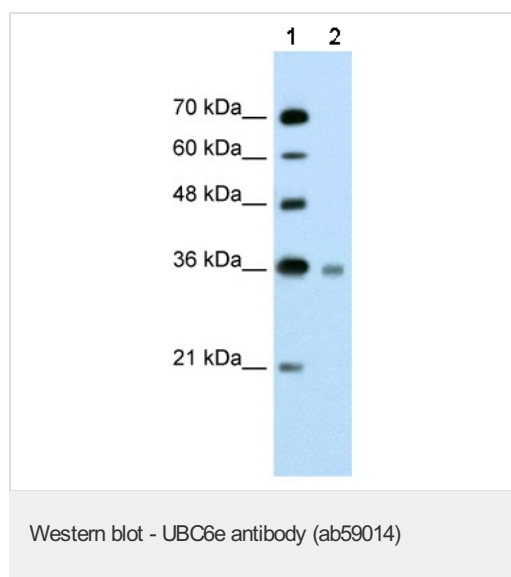
The application notes include recommended starting dilutions; optimal dilutions/concentrations should be determined by the end user.

アプリ ケーション	Abreviews	特記事項
WB		Use a concentration of 2.5 µg/ml. Detects a band of approximately 35 kDa (predicted molecular weight: 35 kDa). Good results were obtained when blocked with 5% non-fat dry milk in 0.05% PBS-T.
IHC-P		Use a concentration of 4 - 8 µg/ml.

## ターゲット情報

機能	Catalyzes the covalent attachment of ubiquitin to other proteins. Seems to function in the selective degradation of misfolded membrane proteins from the endoplasmic reticulum.
パスウェイ	Protein modification; protein ubiquitination.
配列類似性	Belongs to the ubiquitin-conjugating enzyme family.
細胞内局在	Endoplasmic reticulum membrane.

## 画像



**All lanes :** Anti-UBC6e antibody (ab59014) at 2.5 µg/ml

**Lane 1 :** Molecular weight markers

**Lane 2 :** Jurkat cell lysate at 10 µg/ml

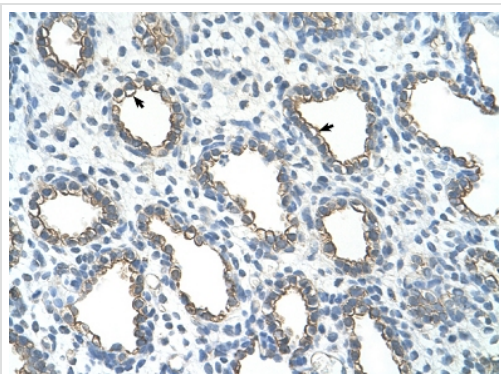
### Secondary

**Lane 2 :** HRP conjugated anti-Rabbit IgG at 1/50000 dilution

**Predicted band size:** 35 kDa

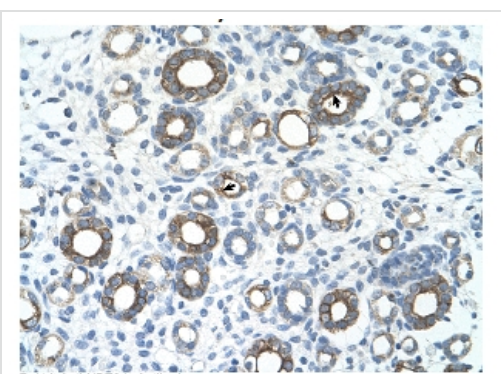
**Observed band size:** 35 kDa

Diluted in 5% skim milk / PBS buffer; gel concentration 12%



Immunohistochemistry (Formalin/PFA-fixed paraffin-embedded sections) - Anti-UBC6e antibody (ab59014)

Immunohistochemistry (Formalin/PFA-fixed paraffin-embedded sections) analysis of human lung tissue labelling UBC6e with ab59014 at 4-8µg/ml. Arrows indicate positively labelled alveolar cells. Magnification: 400X.



Immunohistochemistry (Formalin/PFA-fixed paraffin-embedded sections) - Anti-UBC6e antibody (ab59014)

Immunohistochemistry (Formalin/PFA-fixed paraffin-embedded sections) analysis of human kidney tissue labelling UBC6e with ab59014 at 4-8µg/ml. Arrows indicate positively labelled epithelial cells of renal tubule. Magnification: 400X.

**Please note:** All products are "FOR RESEARCH USE ONLY AND ARE NOT INTENDED FOR DIAGNOSTIC OR THERAPEUTIC USE"

### Our Abpromise to you: Quality guaranteed and expert technical support

- Replacement or refund for products not performing as stated on the datasheet
- Valid for 12 months from date of delivery
- Response to your inquiry within 24 hours
- We provide support in Chinese, English, French, German, Japanese and Spanish
- Extensive multi-media technical resources to help you
- We investigate all quality concerns to ensure our products perform to the highest standards

If the product does not perform as described on this datasheet, we will offer a refund or replacement. For full details of the Abpromise, please visit <http://www.abcam.co.jp/abpromise> or contact our technical team.

### Terms and conditions

- Guarantee only valid for products bought direct from Abcam or one of our authorized distributors