


Product datasheet

Anti-C21orf7 antibody ab58637

画像数 2

製品の概要

製品名	Anti-C21orf7 antibody
製品の詳細	Rabbit polyclonal to C21orf7
由来種	Rabbit
特異性	This antibody reacts with C21orf7.
アプリケーション	適用あり: ELISA, WB, IHC-P
種交差性	交差種: Human 交差が予測される動物種: Mouse, Rat, Rabbit, Horse, Guinea pig, Cow, Cat, Dog 
免疫原	Synthetic peptide: QRKKELIAKL DQAEKEKQVDA AELVREFEAL TEENRTLRLA QSQCVLEK, corresponding to amino acids 181-230 of Human C21orf7 Run BLAST with ExPASy Run BLAST with NCBI
ポジティブ・コントロール	Jurkat cell lysate and human kidney tissue

製品の特性

製品の状態	Liquid
保存方法	Shipped at 4°C. Upon delivery aliquot and store at -20°C. Avoid freeze / thaw cycles.
バッファー	Preservative: None Constituents: 2% Sucrose, PBS
精製度	Protein A purified
ポリ/モノ	ポリクローナル
アイソタイプ	IgG

アプリケーション

Our [Abpromise guarantee](#) covers the use of **ab58637** in the following tested applications.

The application notes include recommended starting dilutions; optimal dilutions/concentrations should be determined by the end user.

アプリ ケーション	Abreviews	特記事項
ELISA		1/312500. Titre using peptide based assay: 1/312500.
WB		Use a concentration of 1.25 µg/ml. Detects a band of approximately 27 kDa (predicted molecular weight: 27 kDa). Good results were obtained when blocked with 5% non-fat dry milk in 0.05% PBS-T.
IHC-P		Use a concentration of 4 - 8 µg/ml.

ターゲット情報

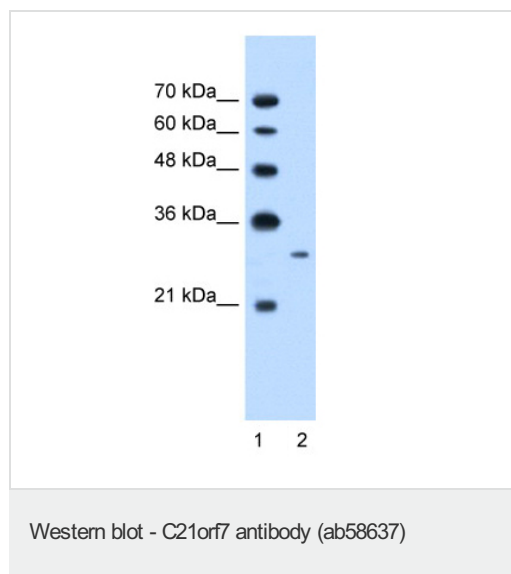
組織特異性

Detected in lung and peripheral blood leukocytes. Expressed predominantly in peripheral blood leukocytes and ubiquitously in adult and fetal tissues. Also expressed strongly in breast carcinoma GI-101, colon adenocarcinoma GI-112, and prostatic adenocarcinoma PC3.

配列類似性

To the C-terminal domain of MAP3K7.

画像



Anti-C21orf7 antibody (ab58637) at 1.25 µg/ml + Jurkat cell lysate at 10 µg with 5% skim milk in PBS buffer

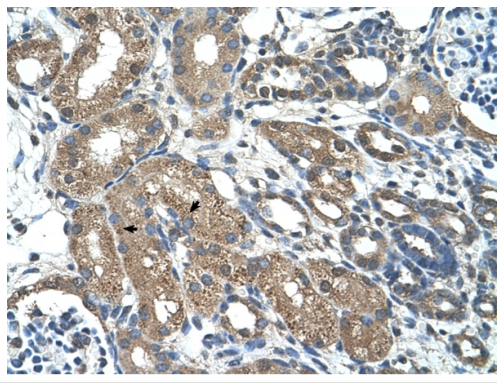
Secondary

HRP conjugated anti-Rabbit IgG at 1/50000 dilution

Predicted band size: 27 kDa

Observed band size: 27 kDa

Gel concentration: 12%



Immunohistochemistry (Formalin/PFA-fixed paraffin-embedded sections) analysis of human kidney tissue labelling C21orf7 with ab58637 at 4-8µg/ml. Arrows indicate positively labelled epithelial cells of the renal tubules. Magnification: 400X.

Immunohistochemistry (Formalin/PFA-fixed paraffin-embedded sections) - Anti-C21orf7 antibody (ab58637)

Please note: All products are "FOR RESEARCH USE ONLY AND ARE NOT INTENDED FOR DIAGNOSTIC OR THERAPEUTIC USE"

Our Abpromise to you: Quality guaranteed and expert technical support

- Replacement or refund for products not performing as stated on the datasheet
- Valid for 12 months from date of delivery
- Response to your inquiry within 24 hours
- We provide support in Chinese, English, French, German, Japanese and Spanish
- Extensive multi-media technical resources to help you
- We investigate all quality concerns to ensure our products perform to the highest standards

If the product does not perform as described on this datasheet, we will offer a refund or replacement. For full details of the Abpromise, please visit <http://www.abcam.co.jp/abpromise> or contact our technical team.

Terms and conditions

- Guarantee only valid for products bought direct from Abcam or one of our authorized distributors