

Product datasheet

Anti-Triosephosphate isomerase antibody ab58327

★★★★★ 2 Abreviews 画像数 3

製品の概要

製品名	Anti-Triosephosphate isomerase antibody
製品の詳細	Mouse monoclonal to Triosephosphate isomerase
アプリケーション	適用あり: WB, ICC/IF, Flow Cyt
種交差性	交差種: Human
免疫原	Recombinant full length protein, corresponding to amino acids 1-250 of Human Triosephosphate isomerase

製品の特性

製品の状態	Liquid
保存方法	Shipped at 4°C. Upon delivery aliquot and store at -20°C or -80°C. Avoid repeated freeze / thaw cycles.
バッファー	Preservative: None PBS, pH 7.2
精製度	Protein G purified
ポリモノ	モノクローナル
アイソタイプ	IgG1
軽鎖の種類	kappa

アプリケーション

Our [Abpromise guarantee](#) covers the use of **ab58327** in the following tested applications.

The application notes include recommended starting dilutions; optimal dilutions/concentrations should be determined by the end user.

アプリケーション	Abreviews	特記事項
WB	★★★★★	Use a concentration of 1 - 5 µg/ml. Predicted molecular weight: 27 kDa.
ICC/IF		Use a concentration of 10 µg/ml.

アプリケーション	Abreviews	特記事項
Flow Cyt		Use 0.1µg for 10 ⁶ cells. ab170190 -Mouse monoclonal IgG1, is suitable for use as an isotype control with this antibody.

ターゲット情報

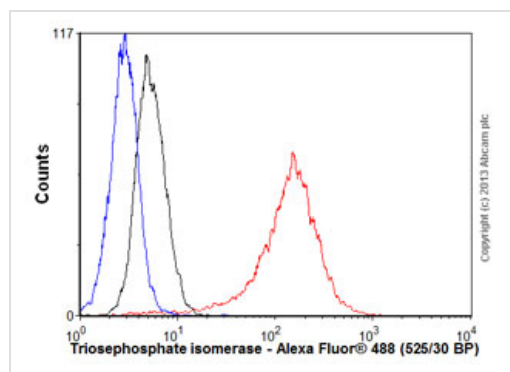
関連性

Triosephosphate isomerase (TIM) catalyses the reversible interconversion of G3P and DHAP. Only G3P can be used in glycolysis, therefore TIM is essential for energy production, allowing two molecules of G3P to be produced for every glucose molecule, thereby doubling the energy yield. Defects in TP11 are the cause of triosephosphate isomerase deficiency (TPI deficiency) [MIM:190450]. TPI deficiency is an autosomal recessive disorder. It is the most severe clinical disorder of glycolysis. It is associated with neonatal jaundice, chronic hemolytic anemia, progressive neuromuscular dysfunction, cardiomyopathy and increased susceptibility to infection.

細胞内局在

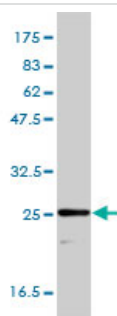
Cytoplasmic and Nuclear; extracellular vesicle exosome; extracellular space.

画像



Flow Cytometry - Anti-Triosephosphate isomerase antibody (ab58327)

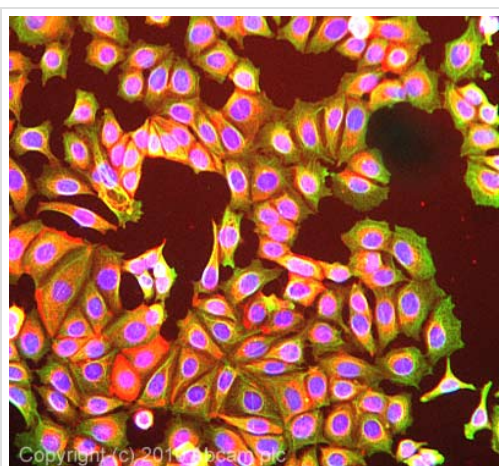
Overlay histogram showing Jurkat cells stained with ab58327 (red line). The cells were fixed with 4% paraformaldehyde (10 min) and then permeabilized with 0.1% PBS-Tween for 20 min. The cells were then incubated in 1x PBS / 10% normal goat serum / 0.3M glycine to block non-specific protein-protein interactions followed by the antibody (ab58327, 0.1µg/1x10⁶ cells) for 30 min at 22°C. The secondary antibody used was Alexa Fluor® 488 goat anti-mouse IgG (H&L) ([ab150113](#)) at 1/2000 dilution for 30 min at 22°C. Isotype control antibody (black line) was mouse IgG1 [ICIGG1] ([ab91353](#), 1µg/1x10⁶ cells) used under the same conditions. Unlabelled sample (blue line) was also used as a control. Acquisition of >5,000 events were collected using a 20mW Argon ion laser (488nm) and 525/30 bandpass filter. This antibody gave a positive signal in Jurkat cells fixed with 80% methanol (5 min)/permeabilized with 0.1% PBS-Tween for 20 min used under the same conditions.



Western blot - Triosephosphate isomerase antibody (ab58327)

Predicted band size : 27 kDa

Triosephosphate isomerase antibody (ab58327) at 1ug/lane + HepG2 cell lysate at 25ug/lane.



Immunocytochemistry/ Immunofluorescence- Triosephosphate isomerase antibody(ab58327)

ICC/IF image of ab58327 stained Mcf7 cells. The cells were 100% methanol fixed (5 min) and then incubated in 1%BSA / 10% normal goat serum / 0.3M glycine in 0.1% PBS-Tween for 1h to permeabilise the cells and block non-specific protein-protein interactions. The cells were then incubated with the antibody (ab58327, 10µg/ml) overnight at +4°C. The secondary antibody (green) was Alexa Fluor® 488 goat anti-mouse IgG (H+L) used at a 1/1000 dilution for 1h. Alexa Fluor® 594 WGA was used to label plasma membranes (red) at a 1/200 dilution for 1h. DAPI was used to stain the cell nuclei (blue) at a concentration of 1.43µM.

Please note: All products are "FOR RESEARCH USE ONLY AND ARE NOT INTENDED FOR DIAGNOSTIC OR THERAPEUTIC USE"

Our Abpromise to you: Quality guaranteed and expert technical support

- Replacement or refund for products not performing as stated on the datasheet
- Valid for 12 months from date of delivery
- Response to your inquiry within 24 hours
- We provide support in Chinese, English, French, German, Japanese and Spanish
- Extensive multi-media technical resources to help you
- We investigate all quality concerns to ensure our products perform to the highest standards

If the product does not perform as described on this datasheet, we will offer a refund or replacement. For full details of the Abpromise, please visit <http://www.abcam.co.jp/abpromise> or contact our technical team.

Terms and conditions

- Guarantee only valid for products bought direct from Abcam or one of our authorized distributors