

## Product datasheet

# Anti-TCF3 / E2A antibody ab58270

### 画像数 1

#### 製品の概要

|              |   |
|--------------|---|
| 製品名          | Anti-TCF3 / E2A antibody  |
| 製品の詳細        | Mouse monoclonal to TCF3 / E2A  |
| 由来種          | Mouse   |
| アプリケーション     | 適用あり: WB  |
| 種交差性         | 交差種: Human  |
| 免疫原          | Recombinant fragment, corresponding to amino acids 545-655 of Human TCF3/ E2A |
| ポジティブ・コントロール |   |

ウェスタン・プロット用ポジティブコントロール  
[Recombinant Human TCF3 / E2A protein](#) >

#### 製品の特性

|        |   |
|--------|---|
| 製品の状態  | Liquid  |
| 保存方法   | Shipped at 4°C. Upon delivery aliquot and store at -20°C or -80°C. Avoid repeated freeze / thaw cycles. |
| バッファー  | Preservative: None<br>PBS, pH 7.2   |
| 精製度    | Protein G purified  |
| ポリ/モノ  | モノクローナル   |
| アイソタイプ | IgG2b   |
| 軽鎖の種類  | kappa   |

#### アプリケーション

Our [Abpromise guarantee](#) covers the use of **ab58270** in the following tested applications.

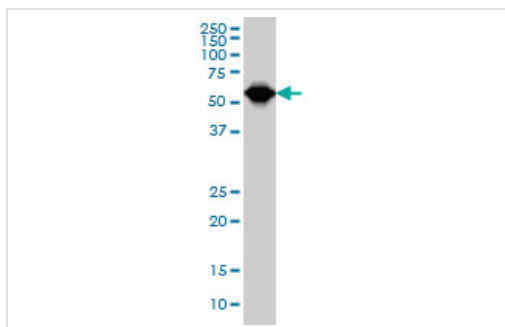
The application notes include recommended starting dilutions; optimal dilutions/concentrations should be determined by the end user.

| アプリケーション | Abreviews | 特記事項  |
|----------|-----------|---|
| WB       |           | Use a concentration of 1 - 5 µg/ml. Predicted molecular weight: 68 kDa. |

## ターゲット情報

|       |  |
|-------|--|
| 機能    | Heterodimers between TCF3 and tissue-specific basic helix-loop-helix (bHLH) proteins play major roles in determining tissue-specific cell fate during embryogenesis, like muscle or early B-cell differentiation. Dimers bind DNA on E-box motifs: 5'-CANNTG-3'. Binds to the kappa-E2 site in the kappa immunoglobulin gene enhancer. |
| 関連疾患  | Note=Chromosomal aberrations involving TCF3 are cause of forms of pre-B-cell acute lymphoblastic leukemia (B-ALL). Translocation t(1;19)(q23;p13.3) with PBX1; Translocation t(17;19)(q22;p13.3) with HLF. Inversion inv(19)(p13;q13) with TFPT.   |
| 配列類似性 | Contains 1 basic helix-loop-helix (bHLH) domain.   |
| ドメイン  | the 9aaTAD motif is a transactivation domain present in a large number of yeast and animal transcription factors.  |
| 翻訳後修飾 | Phosphorylated following NGF stimulation.  |
| 細胞内局在 | Nucleus.   |

## 画像



Western blot - TCF3 / E2A antibody (ab58270)

TCF3 / E2A antibody (ab58270) at 1ug/lane +  
HeLa cell lysate at 25ug/lane.

**Please note:** All products are "FOR RESEARCH USE ONLY AND ARE NOT INTENDED FOR DIAGNOSTIC OR THERAPEUTIC USE"

## Our Abpromise to you: Quality guaranteed and expert technical support

- Replacement or refund for products not performing as stated on the datasheet
- Valid for 12 months from date of delivery
- Response to your inquiry within 24 hours
- We provide support in Chinese, English, French, German, Japanese and Spanish
- Extensive multi-media technical resources to help you
- We investigate all quality concerns to ensure our products perform to the highest standards

If the product does not perform as described on this datasheet, we will offer a refund or replacement. For full details of the Abpromise, please visit <http://www.abcam.co.jp/abpromise> or contact our technical team.

## Terms and conditions

- Guarantee only valid for products bought direct from Abcam or one of our authorized distributors