

Product datasheet

Anti-HIPK1 antibody ab58136

1 References [画像数 2](#)

製品の概要

製品名	Anti-HIPK1 antibody
製品の詳細	Mouse monoclonal to HIPK1
アプリケーション	適用あり: WB, IHC-P
種交差性	交差種: Human
免疫原	Recombinant fragment, corresponding to amino acids 330-430 of Human HIPK1
特記事項	Abcam is committed to meeting high standards of ethical manufacturing and as such, we will be discontinuing this product, which has been generated by the ascites method, within the next year. We are sorry for any inconvenience this may cause. If you would like help finding an alternative product, please do not hesitate to contact our scientific support team.

製品の特性

製品の状態	Liquid
保存方法	Shipped at 4°C. Upon delivery aliquot and store at -20°C or -80°C. Avoid repeated freeze / thaw cycles.
バッファー	Preservative: None PBS, pH 7.2
精製度	Protein G purified
ポリ/モノ	モノクローナル
アイソタイプ	IgG2a
軽鎖の種類	kappa

アプリケーション

Our [Abpromise guarantee](#) covers the use of **ab58136** in the following tested applications.

The application notes include recommended starting dilutions; optimal dilutions/concentrations should be determined by the end user.

アプリケーション	Abreviews	特記事項
WB		

IHC-P

追加情報

WB: Use at a concentration of 1-5 µg/ml.

IHC-P: Use at a concentration of 3 µg/ml.

This antibody has only been tested in WB against the recombinant fragment used as immunogen. We have no data on the detection of endogenous protein.

Not yet tested in other applications.

Optimal dilutions/concentrations should be determined by the end user.

ターゲット情報**機能**

May play a role as a corepressor for homeodomain transcription factors. Phosphorylates DAXX in response to stress, and mediates its translocation from the nucleus to the cytoplasm. May be involved in malignant squamous cell tumor formation.

組織特異性

Ubiquitously expressed with highest levels in skeletal muscle and heart. Overexpressed in breast cancer cell lines.

配列類似性

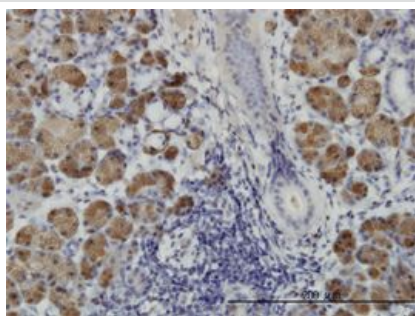
Belongs to the protein kinase superfamily. CMGC Ser/Thr protein kinase family. HIPK subfamily. Contains 1 protein kinase domain.

翻訳後修飾

Autophosphorylated. Phosphorylated and activated by JNK1.

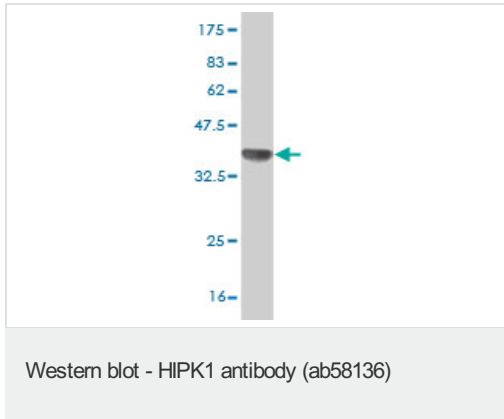
細胞内局在

Nucleus. Cytoplasm. Predominantly nuclear.

画像

HIPK1 antibody (ab58136) used in immunohistochemistry at 3µg/ml on formalin fixed and paraffin embedded human salivary gland.

IHC-P - HIPK1 antibody (ab58136)



Western blot against tagged recombinant protein immunogen using ab58136 HIPK1 antibody at 1ug/ml. Predicted band size of immunogen is 34 kDa

Please note: All products are "FOR RESEARCH USE ONLY AND ARE NOT INTENDED FOR DIAGNOSTIC OR THERAPEUTIC USE"

Our Abpromise to you: Quality guaranteed and expert technical support

- Replacement or refund for products not performing as stated on the datasheet
- Valid for 12 months from date of delivery
- Response to your inquiry within 24 hours
- We provide support in Chinese, English, French, German, Japanese and Spanish
- Extensive multi-media technical resources to help you
- We investigate all quality concerns to ensure our products perform to the highest standards

If the product does not perform as described on this datasheet, we will offer a refund or replacement. For full details of the Abpromise, please visit <http://www.abcam.co.jp/abpromise> or contact our technical team.

Terms and conditions

- Guarantee only valid for products bought direct from Abcam or one of our authorized distributors