

Product datasheet

Anti-Proteasome 20S beta 6 antibody ab58079

2 References [画像数 2](#)

製品の概要

| | |
|----------|---|
| 製品名 | Anti-Proteasome 20S beta 6 antibody |
| 製品の詳細 | Mouse monoclonal to Proteasome 20S beta 6 |
| 由来種 | Mouse |
| 特異性 | This antibody has only been tested in WB against the recombinant fragment used as immunogen. |
| アプリケーション | 適用あり: WB, IHC-P |
| 種交差性 | 交差種: Human |
| 免疫原 | Recombinant full length protein corresponding to Human Proteasome 20S beta 6 aa 1-240. Database link: P28072 |

製品の特性

| | |
|--------|---|
| 製品の状態 | Liquid |
| 保存方法 | Shipped at 4°C. Upon delivery aliquot and store at -20°C or -80°C. Avoid repeated freeze / thaw cycles. |
| バッファー | Preservative: None PBS, pH 7.2 |
| 精製度 | Protein G purified |
| ポリ/モノ | モノクローナル |
| アイソタイプ | IgG1 |
| 軽鎖の種類 | kappa |

アプリケーション

Our [Abpromise guarantee](#) covers the use of **ab58079** in the following tested applications.

The application notes include recommended starting dilutions; optimal dilutions/concentrations should be determined by the end user.

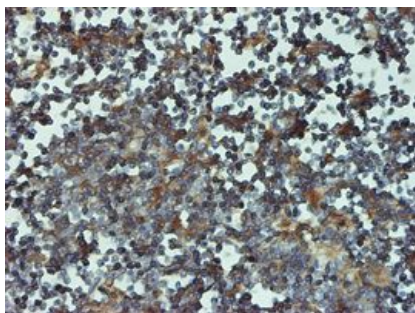
| アプリケーション | Abreviews | 特記事項 |
|----------|-----------|------|
|----------|-----------|------|

| アプリケーション | Abreviews | 特記事項 |
|----------|-----------|---|
| WB | | Use a concentration of 1 - 5 µg/ml. Only tested in WB against the recombinant fragment used as immunogen |
| IHC-P | | Use a concentration of 5 µg/ml. |

ターゲット情報

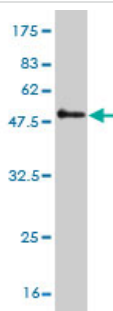
| | |
|-------|--|
| 機能 | The proteasome is a multicatalytic proteinase complex which is characterized by its ability to cleave peptides with Arg, Phe, Tyr, Leu, and Glu adjacent to the leaving group at neutral or slightly basic pH. The proteasome has an ATP-dependent proteolytic activity. This unit is responsible of the peptidyl glutamyl-like activity. May catalyze basal processing of intracellular antigens. |
| 配列類似性 | Belongs to the peptidase T1B family. |
| 細胞内局在 | Cytoplasm. Nucleus. |

画像



IHC-P - Proteasome 20S beta 6 antibody (ab58079)

Proteasome 20S beta 6 antibody (ab58079) used in immunohistochemistry at 5ug/ml on formalin fixed and paraffin embedded human lymph node tissue.



Western blot - Proteasome 20S beta 6 antibody (ab58079)

Western blot against tagged recombinant protein immunogen using ab58079
Proteasome 20S beta 6 antibody at 1ug/ml.
Predicted band size of immunogen is 52 kDa

Please note: All products are "FOR RESEARCH USE ONLY AND ARE NOT INTENDED FOR DIAGNOSTIC OR THERAPEUTIC USE"

Our Abpromise to you: Quality guaranteed and expert technical support

- Replacement or refund for products not performing as stated on the datasheet
- Valid for 12 months from date of delivery
- Response to your inquiry within 24 hours

- We provide support in Chinese, English, French, German, Japanese and Spanish
- Extensive multi-media technical resources to help you
- We investigate all quality concerns to ensure our products perform to the highest standards

If the product does not perform as described on this datasheet, we will offer a refund or replacement. For full details of the Abpromise, please visit <http://www.abcam.co.jp/abpromise> or contact our technical team.

Terms and conditions

- Guarantee only valid for products bought direct from Abcam or one of our authorized distributors