

Product datasheet

Anti-SLC6A19 antibody ab58036

画像数 1

製品の概要

| | |
|----------|---|
| 製品名 | Anti-SLC6A19 antibody |
| 製品の詳細 | Mouse monoclonal to SLC6A19 |
| 由来種 | Mouse |
| アプリケーション | 適用あり: WB |
| 種交差性 | 交差種: Human |
| 免疫原 | Recombinant fragment: GFRATQRYDD CFSTNILTILINGFDLPEGNV TQENFVDMQQ RCNASDPAAY AQLVFQTCDI NAFLSEAVEG TGLAFV FTE AITKMPLSP, corresponding to amino acids 326-415 of Human SLC6A19 Run BLAST with ExPASy Run BLAST with NCBI |

製品の特性

| | |
|--------|---|
| 製品の状態 | Liquid |
| 保存方法 | Shipped at 4°C. Upon delivery aliquot and store at -20°C or -80°C. Avoid repeated freeze / thaw cycles. |
| バッファー | Preservative: None PBS, pH 7.2 |
| 精製度 | Protein G purified |
| ポリモノ | モノクローナル |
| アイソタイプ | IgG2a |
| 軽鎖の種類 | kappa |

アプリケーション

Our [Abpromise guarantee](#) covers the use of **ab58036** in the following tested applications.

The application notes include recommended starting dilutions; optimal dilutions/concentrations should be determined by the end user.

| アプリケーション | Abreviews | 特記事項 |
|----------|-----------|------|
|----------|-----------|------|

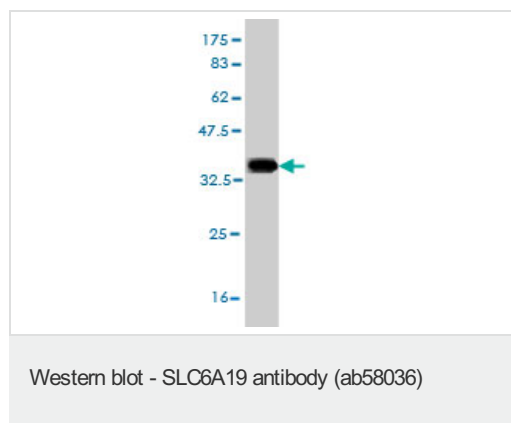
| アプリケーション | Abreviews | 特記事項 |
|----------|-----------|------|
|----------|-----------|------|

WB Use a concentration of 1 - 5 µg/ml.
 This antibody has only been tested in WB against the recombinant fragment used as immunogen. We have no data on the detection of endogenous protein.

ターゲット情報

関連性 Transporter that mediates epithelial resorption of neutral amino acids across the apical membrane of epithelial cells in the kidney and intestine. It appears that leucine is the preferred substrate, but all large neutral non-aromatic L-amino acids bind to this transporter. Uptake of leucine is sodium-dependent. In contrast to other members of the neurotransmitter transporter family, does not appear to be chloride-dependent

画像



Western blot against tagged recombinant protein immunogen using ab58036 SLC6A19 antibody at 1ug/ml. Predicted band size of immunogen is 37 kDa

Please note: All products are "FOR RESEARCH USE ONLY AND ARE NOT INTENDED FOR DIAGNOSTIC OR THERAPEUTIC USE"

Our Abpromise to you: Quality guaranteed and expert technical support

- Replacement or refund for products not performing as stated on the datasheet
- Valid for 12 months from date of delivery
- Response to your inquiry within 24 hours
- We provide support in Chinese, English, French, German, Japanese and Spanish
- Extensive multi-media technical resources to help you
- We investigate all quality concerns to ensure our products perform to the highest standards

If the product does not perform as described on this datasheet, we will offer a refund or replacement. For full details of the Abpromise, please visit <http://www.abcam.co.jp/abpromise> or contact our technical team.

Terms and conditions

- Guarantee only valid for products bought direct from Abcam or one of our authorized distributors