

Product datasheet

Anti-GRK1 antibody ab57928

画像数 1

製品の概要

製品名	Anti-GRK1 antibody
製品の詳細	Mouse monoclonal to GRK1
アプリケーション	適用あり: WB
種交差性	交差種: Human
免疫原	Recombinant fragment: RDSLSLEFES VCLEQPIGKK LFQQFLQSAE KHLPALELWK DIEDYDTADN DLQPQKAQTI LAQYLDPOAK LFCSFLDEGI VAKFKEGPVE IQDGLFQPLL , corresponding to amino acids 51-150 of Human GRK1 Run BLAST with ExPASy Run BLAST with NCBI

製品の特性

製品の状態	Liquid
保存方法	Shipped at 4°C. Upon delivery aliquot and store at -20°C or -80°C. Avoid repeated freeze / thaw cycles.
バッファー	Preservative: None PBS, pH 7.2
精製度	Protein G purified
ポリモノ	モノクローナル
アイソタイプ	IgG2b
軽鎖の種類	kappa

アプリケーション

Our [Abpromise guarantee](#) covers the use of **ab57928** in the following tested applications.

The application notes include recommended starting dilutions; optimal dilutions/concentrations should be determined by the end user.

アプリケーション	Abreviews	特記事項
----------	-----------	------

WB

追加情報

WB: Use at a concentration of 1-5 µg/ml.

This antibody has only been tested in WB against the recombinant fragment used as immunogen. We have no data on the detection of endogenous protein.

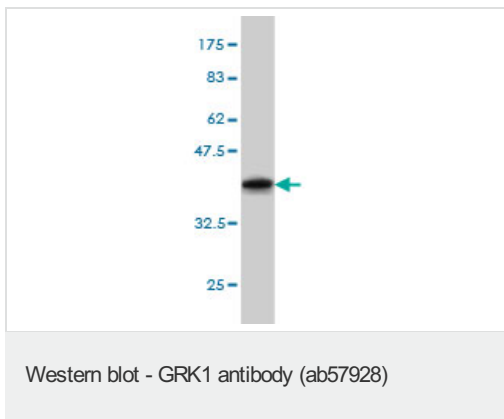
Not yet tested in other applications.

Optimal dilutions/concentrations should be determined by the end user.

ターゲット情報

機能	Retina-specific kinase involved in the signal turnoff via phosphorylation of rhodopsin (RHO), the G protein- coupled receptor that initiates the phototransduction cascade. This rapid desensitization is essential for scotopic vision and permits rapid adaptation to changes in illumination.
組織特異性	Retinal-specific. Expressed in rods and cones cells.
関連疾患	Night blindness, congenital stationary, Oguchi type 2
配列類似性	Belongs to the protein kinase superfamily. AGC Ser/Thr protein kinase family. GPRK subfamily. Contains 1 AGC-kinase C-terminal domain. Contains 1 protein kinase domain. Contains 1 RGS domain.
翻訳後修飾	Autophosphorylated, Ser-21 is a minor site of autophosphorylation compared to Ser-491 and Thr-492 (By similarity). Phosphorylation at Ser-21 is regulated by light and activated by cAMP. Farnesylation is required for full activity.
細胞内局在	Membrane.

画像



Western blot against tagged recombinant protein immunogen using ab57928 GRK1 antibody at 1ug/ml. Predicted band size of immunogen is 37 kDa

Please note: All products are "FOR RESEARCH USE ONLY AND ARE NOT INTENDED FOR DIAGNOSTIC OR THERAPEUTIC USE"

Our Promise to you: Quality guaranteed and expert technical support

- Replacement or refund for products not performing as stated on the datasheet
- Valid for 12 months from date of delivery
- Response to your inquiry within 24 hours
- We provide support in Chinese, English, French, German, Japanese and Spanish

- Extensive multi-media technical resources to help you
- We investigate all quality concerns to ensure our products perform to the highest standards

If the product does not perform as described on this datasheet, we will offer a refund or replacement. For full details of the Abpromise, please visit <http://www.abcam.co.jp/abpromise> or contact our technical team.

Terms and conditions

- Guarantee only valid for products bought direct from Abcam or one of our authorized distributors