

Product datasheet

Anti-Estrogen Receptor beta antibody ab5784

画像数 2

製品の概要

製品名	Anti-Estrogen Receptor beta antibody
製品の詳細	Rabbit polyclonal to Estrogen Receptor beta
由来種	Rabbit
アプリケーション	<b>適用あり:</b> WB, ICC/IF, IHC-P
種交差性	<b>交差種:</b> Mouse, Rat, Human
免疫原	Synthetic peptide corresponding to Mouse Estrogen Receptor beta aa 467-485. Sequence: CCSTEDSKNKEGSQNLQSQ  <a href="#">Run BLAST with</a> <a href="#">Run BLAST with</a>
ポジティブ・コントロール	WB: rat brain lysate IHC: rat cerebellum (paraventricular nucleus and retrochiasmatic nucleus)

製品の特性

製品の状態	Liquid
保存方法	Shipped at 4°C. Store at +4°C short term (1-2 weeks). Upon delivery aliquot. Store at -20°C or -80°C. Avoid freeze / thaw cycle.
バッファー	Preservative: 0.05% Sodium azide Constituents: 0.1% BSA, 99% PBS
精製度	Immunogen affinity purified
ポリ/モノ	ポリクローナル
アイソタイプ	IgG

アプリケーション

Our [Abpromise guarantee](#) covers the use of **ab5784** in the following tested applications.

The application notes include recommended starting dilutions; optimal dilutions/concentrations should be determined by the end user.

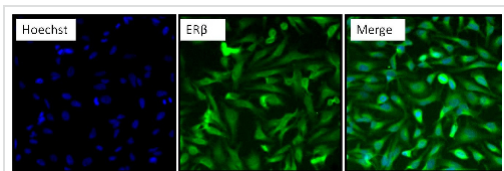
アプリケーション	Abreviews	特記事項

アプリケーション	Abreviews	特記事項
WB		Use a concentration of 2 µg/ml. Detects a band of approximately 55 kDa (predicted molecular weight: 59 kDa).
ICC/IF		1/50 - 1/200.
IHC-P		Use a concentration of 1 - 2 µg/ml. Perform heat mediated antigen retrieval via the microwave method before commencing with IHC staining protocol.

## ターゲット情報

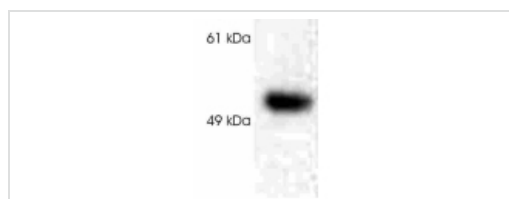
機能	Nuclear hormone receptor. Binds estrogens with an affinity similar to that of ESR1, and activates expression of reporter genes containing estrogen response elements (ERE) in an estrogen-dependent manner. Isoform beta-cx lacks ligand binding ability and has no or only very low ere binding activity resulting in the loss of ligand-dependent transactivation ability. DNA-binding by ESR1 and ESR2 is rapidly lost at 37 degrees Celsius in the absence of ligand while in the presence of 17 beta-estradiol and 4-hydroxy-tamoxifen loss in DNA-binding at elevated temperature is more gradual.
組織特異性	Isoform beta-1 is expressed in testis and ovary, and at a lower level in heart, brain, placenta, liver, skeletal muscle, spleen, thymus, prostate, colon, bone marrow, mammary gland and uterus. Also found in uterine bone, breast, and ovarian tumor cell lines, but not in colon and liver tumors. Isoform beta-2 is expressed in spleen, thymus, testis and ovary and at a lower level in skeletal muscle, prostate, colon, small intestine, leukocytes, bone marrow, mammary gland and uterus. Isoform beta-3 is found in testis. Isoform beta-4 is expressed in testis, and at a lower level in spleen, thymus, ovary, mammary gland and uterus. Isoform beta-5 is expressed in testis, placenta, skeletal muscle, spleen and leukocytes, and at a lower level in heart, lung, liver, kidney, pancreas, thymus, prostate, colon, small intestine, bone marrow, mammary gland and uterus. Not expressed in brain.
配列類似性	Belongs to the nuclear hormone receptor family. NR3 subfamily. Contains 1 nuclear receptor DNA-binding domain.
ドメイン	Composed of three domains: a modulating N-terminal domain, a DNA-binding domain and a C-terminal ligand-binding domain.
細胞内局在	Nucleus.

## 画像



Immunocytochemistry/ Immunofluorescence - Anti-Estrogen Receptor beta antibody (ab5784)

Immunocytochemistry/Immunofluorescence analysis of HeLa cells labeling Estrogen Receptor beta (green) with ab5784 at 1/100. Cells were fixed with formalin, permeabilized with 0.1% Triton X-100 in TBS for 10 minutes at room temperature and blocked with 5% normal goat serum for 15 minutes at room temperature. Cells were incubated with the primary antibody for at least 1 hour at room temperature. A DyLight 488-conjugated goat anti-rabbit IgG (1/200) secondary antibody was used. Nuclei (blue) were stained with Hoechst. 20X magnification.



Western blot - Estrogen Receptor beta antibody (ab5784)

Shows a Western blot of Estrogen Receptor beta on HEK cell extract using ab5784.

**Please note:** All products are "FOR RESEARCH USE ONLY AND ARE NOT INTENDED FOR DIAGNOSTIC OR THERAPEUTIC USE"

### Our Abpromise to you: Quality guaranteed and expert technical support

- Replacement or refund for products not performing as stated on the datasheet
- Valid for 12 months from date of delivery
- Response to your inquiry within 24 hours
- We provide support in Chinese, English, French, German, Japanese and Spanish
- Extensive multi-media technical resources to help you
- We investigate all quality concerns to ensure our products perform to the highest standards

If the product does not perform as described on this datasheet, we will offer a refund or replacement. For full details of the Abpromise, please visit <http://www.abcam.co.jp/abpromise> or contact our technical team.

### Terms and conditions

- Guarantee only valid for products bought direct from Abcam or one of our authorized distributors