

## Product datasheet

# Anti-MMP26 antibody ab57636

### 画像数 1

#### 製品の概要

製品名	Anti-MMP26 antibody
製品の詳細	Mouse monoclonal to MMP26
アプリケーション	<b>適用あり:</b> WB
種交差性	<b>交差種:</b> Human
免疫原	Recombinant fragment, corresponding to amino acids 152-262 of Human MMP26

#### 製品の特性

製品の状態	Liquid
保存方法	Shipped at 4°C. Upon delivery aliquot and store at -20°C or -80°C. Avoid repeated freeze / thaw cycles.
バッファー	Preservative: None PBS, pH 7.2
精製度	Protein G purified
ポリ/モノ	モノクローナル
アイソタイプ	IgG2a
軽鎖の種類	kappa

#### アプリケーション

Our [Abpromise guarantee](#) covers the use of **ab57636** in the following tested applications.

The application notes include recommended starting dilutions; optimal dilutions/concentrations should be determined by the end user.

アプリケーション	Abreviews	特記事項
WB		

#### 追加情報

WB: Use at a concentration of 1-5 µg/ml.

Not yet tested in other applications.

Optimal dilutions/concentrations should be determined by the end user.

## ターゲット情報

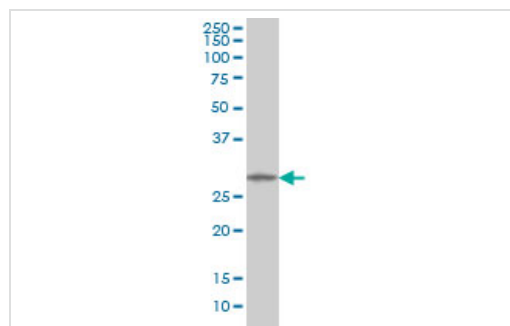
### 関連性

Proteins of the matrix metalloproteinase (MMP) family are involved in the breakdown of extracellular matrix in normal physiological processes, such as embryonic development, reproduction, and tissue remodeling, as well as in disease processes, such as arthritis and metastasis. Most MMP's are secreted as inactive proproteins which are activated when cleaved by extracellular proteinases. MMP26, also known as Matrilysin 2, was first cloned from human fetal cells, and identified as an MMP most closely related to MMP7 (Matrilysin 1). The homology between MMP7 and MMP26 is low (only 38% identical), thus the functions are unlikely to be similar. Homology is much higher (48% identical) for the comparable region of MMP12, but MMP26 appears to have broader substrate specificity than does MMP12. MMP26, like MMP7, lacks the hemopexin domain common to the other MMPs, but contains a Propeptide domain, cysteine switch activation site, followed by a catalytic domain, and a short vestige of the hinge region. MMP26 is apparently not glycosylated, and is a secreted MMP. Tissue analysis shows MMP26 most strongly in placenta and uterus, but also in kidney cells, lung cells, lymphocytes and lung or endometrial carcinoma cells. MMP26 is proteolytically active, cleaving casein in zymograms, and gelatin, a1PI, fibrinogen, fibronectin, vitronectin, type IV collagen, and apparently activating MMP9. The proteolytic activity was blocked by TIMP1 and TIMP2. MMP26 does not appear to be produced by most normal quiescent cells, but treatment of many cell types with the phorbol ester TPA, or IL1 stimulates production of MMP26.

### 細胞内局在

Secreted

## 画像



Western blot - MMP26 antibody (ab57636)

**Predicted band size : 30 kDa**

MMP26 antibody (ab57636) at 1 ug/lane + HL-60 cell lysate at 25ug/lane.

**Please note:** All products are "FOR RESEARCH USE ONLY AND ARE NOT INTENDED FOR DIAGNOSTIC OR THERAPEUTIC USE"

## Our Abpromise to you: Quality guaranteed and expert technical support

- Replacement or refund for products not performing as stated on the datasheet
- Valid for 12 months from date of delivery
- Response to your inquiry within 24 hours
- We provide support in Chinese, English, French, German, Japanese and Spanish
- Extensive multi-media technical resources to help you
- We investigate all quality concerns to ensure our products perform to the highest standards

If the product does not perform as described on this datasheet, we will offer a refund or replacement. For full details of the Abpromise, please visit <http://www.abcam.co.jp/abpromise> or contact our technical team.

### **Terms and conditions**

---

- Guarantee only valid for products bought direct from Abcam or one of our authorized distributors