

Product datasheet

Anti-PCDH19 antibody ab57510

★★★★☆ 3 Abreviews 1 References 画像数 2

製品の概要

製品名	Anti-PCDH19 antibody
製品の詳細	Mouse monoclonal to PCDH19
アプリケーション	適用あり: WB, Flow Cyt
種交差性	交差種: Human
免疫原	Recombinant fragment: RLVPRDVEET DKMNVVSCSS LTSSLNYFDY HQQTLPLGCR RSESTFLNVE NQNTRNTSAN HIYHHSFNSQ GPQQPDLIIN GAPLPETENY SFDSNYVNSR , corresponding to amino acids 241-341 of Human PCDH19 Run BLAST with ExPASy Run BLAST with NCBI

製品の特性

製品の状態	Liquid
保存方法	Shipped at 4°C. Upon delivery aliquot and store at -20°C or -80°C. Avoid repeated freeze / thaw cycles.
バッファー	Preservative: None PBS, pH 7.2
精製度	Protein G purified
ポリ/モノ	モノクローナル
アイソタイプ	IgG2a
軽鎖の種類	kappa

アプリケーション

Our [Abpromise guarantee](#) covers the use of **ab57510** in the following tested applications.

The application notes include recommended starting dilutions; optimal dilutions/concentrations should be determined by the end user.

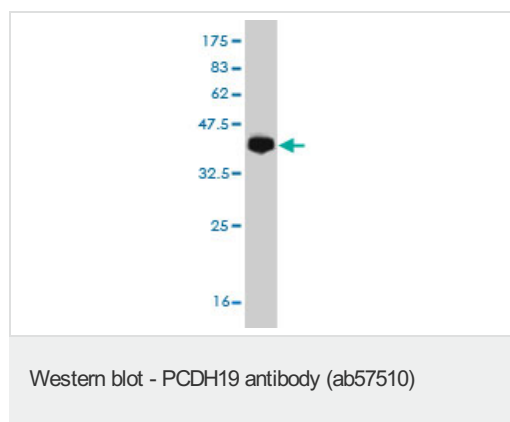
アプリケーション	Abreviews	特記事項
WB	★★★★☆	Use a concentration of 1 - 5 µg/ml. This antibody has only been tested in WB against the recombinant fragment used as immunogen. We have no data on the detection of endogenous protein.

アプリ ケーショ ン	Abreviews	特記事項
Flow Cyt		Use 0.5µg for 10 ⁶ cells. ab170191 -Mouse monoclonal IgG2a, is suitable for use as an isotype control with this antibody.

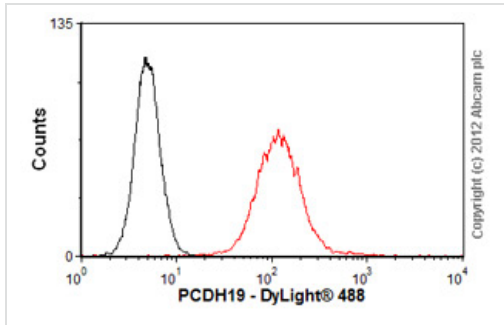
ターゲット情報

機能	Potential calcium-dependent cell-adhesion protein.
組織特異性	Moderately expressed in all regions of the brain examined, with lowest levels found in the cerebellum. Moderate expression is also found in ovary, and low expression in all other tissues tested. Also detected in primary skin fibroblast.
関連疾患	Epileptic encephalopathy, early infantile, 9
配列類似性	Contains 6 cadherin domains.
発生段階	Expressed in developing cortical plate, amygdala and subcortical regions and in the ganglionic eminence.
細胞内局在	Cell membrane.

画像



Western blot against tagged recombinant protein immunogen using ab57510 PCDH19 antibody at 1ug/ml. Predicted band size of immunogen is 37 kDa



Flow Cytometry-Anti-PCDH19 antibody(ab57510)

Overlay histogram showing SH-SY5Y cells stained with ab57510 (red line). The cells were fixed with 80% methanol (5 min) and incubated in 1x PBS / 10% normal goat serum / 0.3M glycine to block non-specific protein-protein interactions. The cells were then incubated with the antibody (ab57510, 0.5µg/1x10⁶ cells) for 30 min at 22°C. The secondary antibody used was DyLight® 488 goat anti-mouse IgG (H+L) (ab96879) at 1/500 dilution for 30 min at 22°C. Isotype control antibody (black line) was mouse IgG2a [ICIGG2A] (ab91361, 1µg/1x10⁶ cells) used under the same conditions. Acquisition of >5,000 events was performed. This antibody gave a positive result in 4% paraformaldehyde (10 min) fixed SH-SY5Y cells used under the same conditions.

Please note that Abcam do not have any data for use of this antibody on non-fixed cells. We welcome any customer feedback.

Please note: All products are "FOR RESEARCH USE ONLY AND ARE NOT INTENDED FOR DIAGNOSTIC OR THERAPEUTIC USE"

Our Abpromise to you: Quality guaranteed and expert technical support

- Replacement or refund for products not performing as stated on the datasheet
- Valid for 12 months from date of delivery
- Response to your inquiry within 24 hours
- We provide support in Chinese, English, French, German, Japanese and Spanish
- Extensive multi-media technical resources to help you
- We investigate all quality concerns to ensure our products perform to the highest standards

If the product does not perform as described on this datasheet, we will offer a refund or replacement. For full details of the Abpromise, please visit <http://www.abcam.co.jp/abpromise> or contact our technical team.

Terms and conditions

- Guarantee only valid for products bought direct from Abcam or one of our authorized distributors