

Product datasheet

Anti-Neurologin 3 antibody ab57375

画像数 1

製品の概要

製品名	Anti-Neurologin 3 antibody
製品の詳細	Mouse monoclonal to Neurologin 3
由来種	Mouse
アプリケーション	適用あり: WB
種交差性	交差種: Human
免疫原	Recombinant fragment: PRVRDHYRAT KVAFWKHLVP HLYNLHDMFH YTSTTTKVPP PDTTHSSHIT RRPNGKTWST KRPAISPAYS NENAQGSWNG DQDAGPLLVE NPRDYSTELS , corresponding to amino acids 590-690 of Human Neurologin 3 Run BLAST with ExPASy Run BLAST with NCBI

製品の特性

製品の状態	Liquid
保存方法	Shipped at 4°C. Upon delivery aliquot and store at -20°C or -80°C. Avoid repeated freeze / thaw cycles.
バッファー	Preservative: None PBS, pH 7.2
精製度	Protein G purified
ポリモノ	モノクローナル
アイソタイプ	IgG2a
軽鎖の種類	kappa

アプリケーション

Our [Abpromise guarantee](#) covers the use of **ab57375** in the following tested applications.

The application notes include recommended starting dilutions; optimal dilutions/concentrations should be determined by the end user.

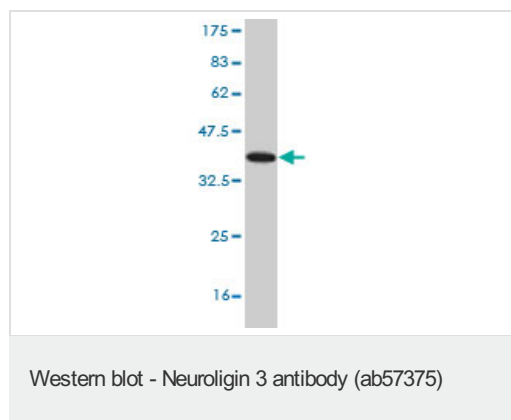
アプリケーション	Abreviews	特記事項

アプリケーション	Abreviews	特記事項
WB		Use a concentration of 1 - 5 µg/ml. This antibody has only been tested in WB against the recombinant fragment used as immunogen. We have no data on the detection of endogenous protein.

ターゲット情報

機能	Cell surface protein involved in cell-cell-interactions via its interactions with neurexin family members. Plays a role in synapse function and synaptic signal transmission, and may mediate its effects by clustering other synaptic proteins. May promote the initial formation of synapses, but is not essential for this. May also play a role in glia-glia or glia-neuron interactions in the developing peripheral nervous system.
組織特異性	Expressed in the blood vessel walls (at protein level). Detected in throughout the brain and in spinal cord. Detected in brain, and at lower levels in pancreas islet beta cells.
関連疾患	Autism, X-linked 1 (AUTSX1) [MIM:300425]: A complex multifactorial, pervasive developmental disorder characterized by impairments in reciprocal social interaction and communication, restricted and stereotyped patterns of interests and activities, and the presence of developmental abnormalities by 3 years of age. Most individuals with autism also manifest moderate mental retardation. Note=Disease susceptibility is associated with variations affecting the gene represented in this entry. X-linked Asperger syndrome 1 (ASPGX1) [MIM:300494]: Considered to be a form of childhood autism. Note=Disease susceptibility is associated with variations affecting the gene represented in this entry.
配列類似性	Belongs to the type-B carboxylesterase/lipase family.
細胞内局在	Cell membrane. Cell junction > synapse. Detected at both glutamatergic and GABAergic synapses.

画像



Western blot against tagged recombinant protein immunogen using ab57375 Neuroligin 3 antibody at 1ug/ml. Predicted band size of immunogen is 37 kDa

Please note: All products are "FOR RESEARCH USE ONLY AND ARE NOT INTENDED FOR DIAGNOSTIC OR THERAPEUTIC USE"

Our Abpromise to you: Quality guaranteed and expert technical support

- Replacement or refund for products not performing as stated on the datasheet
- Valid for 12 months from date of delivery
- Response to your inquiry within 24 hours

- We provide support in Chinese, English, French, German, Japanese and Spanish
- Extensive multi-media technical resources to help you
- We investigate all quality concerns to ensure our products perform to the highest standards

If the product does not perform as described on this datasheet, we will offer a refund or replacement. For full details of the Abpromise, please visit <http://www.abcam.co.jp/abpromise> or contact our technical team.

Terms and conditions

- Guarantee only valid for products bought direct from Abcam or one of our authorized distributors