

Product datasheet

Anti-ARH antibody ab57261

1 References [画像数 4](#)

製品の概要

製品名	Anti-ARH antibody
製品の詳細	Mouse monoclonal to ARH
由来種	Mouse
アプリケーション	適用あり: WB, ICC/IF, IHC-P, Flow Cyt
種交差性	交差種: Human
免疫原	Recombinant full length protein, corresponding to amino acids 1-264 of Human ARH

製品の特性

製品の状態	Liquid
保存方法	Shipped at 4°C. Upon delivery aliquot and store at -20°C or -80°C. Avoid repeated freeze / thaw cycles.
バッファー	Preservative: None PBS, pH 7.2
精製度	Protein G purified
ポリ/モノ	モノクローナル
アイソタイプ	IgG1
軽鎖の種類	kappa

アプリケーション

Our [Abpromise guarantee](#) covers the use of **ab57261** in the following tested applications.

The application notes include recommended starting dilutions; optimal dilutions/concentrations should be determined by the end user.

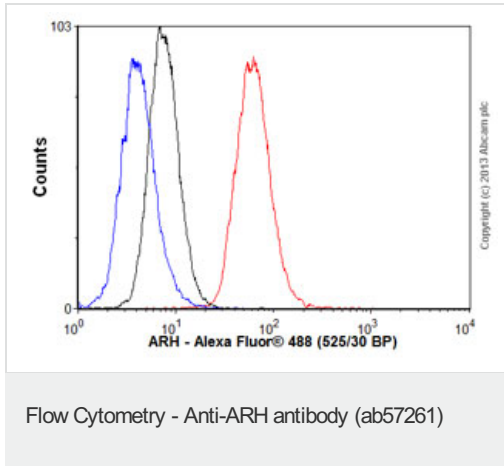
アプリケーション	Abreviews	特記事項
WB		Use a concentration of 1 - 5 µg/ml.
ICC/IF		Use a concentration of 10 µg/ml.
IHC-P		Use a concentration of 2 µg/ml.

アプリケーション	Abreviews	特記事項
Flow Cyt		Use 0.01µg for 10 ⁶ cells. ab170190 - Mouse monoclonal IgG1, is suitable for use as an isotype control with this antibody.

ターゲット情報

機能	Adapter protein (clathrin-associated sorting protein (CLASP)) required for efficient endocytosis of the LDL receptor (LDLR) in polarized cells such as hepatocytes and lymphocytes, but not in non-polarized cells (fibroblasts). May be required for LDL binding and internalization but not for receptor clustering in coated pits. May facilitate the endocytosis of LDLR and LDLR-LDL complexes from coated pits by stabilizing the interaction between the receptor and the structural components of the pits. May also be involved in the internalization of other LDLR family members. Binds to phosphoinositides, which regulate clathrin bud assembly at the cell surface.
組織特異性	Expressed at high levels in the kidney, liver, and placenta, with lower levels detectable in brain, heart, muscle, colon, spleen, intestine, lung, and leukocytes.
関連疾患	Defects in LDLRAP1 are the cause of autosomal recessive hypercholesterolemia (ARH) [MIM:603813]. ARH is a disorder caused by defective internalization of LDL receptors (LDLR) in the liver. ARH has the clinical features of familial hypercholesterolemia (FH) [MIM:143890] homozygotes, including severely elevated plasma LDL cholesterol, tuberous and tendon xanthomata, and premature atherosclerosis. LDL receptor (LDLR) activity measured in skin fibroblasts is normal, as the LDL binding ability.
配列類似性	Contains 1 PID domain.
ドメイン	The [DE]-X(1,2)-F-X-X-[FL]-X-X-X-R motif mediates interaction the AP-2 complex subunit AP2B1.
翻訳後修飾	Phosphorylated upon DNA damage, probably by ATM or ATR.
細胞内局在	Cytoplasm.

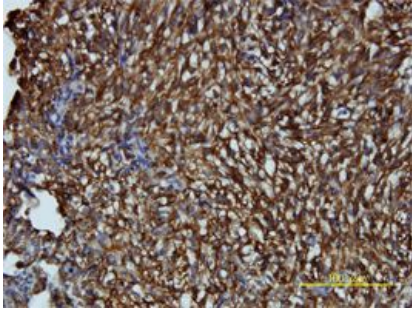
画像



Overlay histogram showing HEK293 cells stained with ab57261 (red line). The cells were fixed with 80% methanol (5 min) and then permeabilized with 0.1% PBS-Tween for 20 min. The cells were then incubated in 1x PBS / 10% normal goat serum / 0.3M glycine to block non-specific protein-protein interactions followed by the antibody (ab57261, 0.01 $\mu\text{g}/1 \times 10^6$ cells) for 30 min at 22°C. The secondary antibody used was Alexa Fluor® 488 goat anti-mouse IgG (H&L) (ab150113) at 1/2000 dilution for 30 min at 22°C. Isotype control antibody (black line) was mouse IgG1 [ICIGG1] (ab91353, 1 $\mu\text{g}/1 \times 10^6$ cells) used under the same conditions. Unlabelled sample (blue line) was also used as a control. Acquisition of >5,000 events were collected using a 20mW Argon ion laser (488nm) and 525/30 bandpass filter. This antibody gave a positive signal in HEK293 cells fixed with 4% paraformaldehyde (10 min) permeabilized with 0.1% PBS-Tween for 20 min used under the same conditions.

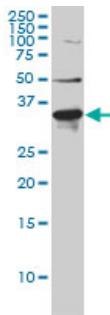


ARH antibody (ab57261) used in immunofluorescence at 10ug/ml on HeLa cells.



IHC-P - ARH antibody (ab57261)

ARH antibody (ab57261) used in immunohistochemistry at 2ug/ml on formalin fixed and paraffin embedded human malignant fibrous histiocytoma tissue.



Western blot - ARH antibody (ab57261)

ARH antibody (ab57261) at 1ug/lane + HeLa cell lysate at 25ug/lane.

Please note: All products are "FOR RESEARCH USE ONLY AND ARE NOT INTENDED FOR DIAGNOSTIC OR THERAPEUTIC USE"

Our Abpromise to you: Quality guaranteed and expert technical support

- Replacement or refund for products not performing as stated on the datasheet
- Valid for 12 months from date of delivery
- Response to your inquiry within 24 hours
- We provide support in Chinese, English, French, German, Japanese and Spanish
- Extensive multi-media technical resources to help you
- We investigate all quality concerns to ensure our products perform to the highest standards

If the product does not perform as described on this datasheet, we will offer a refund or replacement. For full details of the Abpromise, please visit <http://www.abcam.co.jp/abpromise> or contact our technical team.

Terms and conditions

- Guarantee only valid for products bought direct from Abcam or one of our authorized distributors