

Product datasheet

Anti-Protein Kinase D2 antibody ab57114

KO 評価済

★★★★☆ 1 Abreviews 4 References 画像数 3

製品の概要

製品名	Anti-Protein Kinase D2 antibody
製品の詳細	Mouse monoclonal to Protein Kinase D2
由来種	Mouse
アプリケーション	適用あり: WB, IHC-P
種交差性	交差種: Human
免疫原	Recombinant fragment, corresponding to amino acids 1-110 of Human Protein Kinase D2

製品の特性

製品の状態	Liquid
保存方法	Shipped at 4°C. Upon delivery aliquot and store at -20°C or -80°C. Avoid repeated freeze / thaw cycles.
バッファー	Preservative: None PBS, pH 7.2
精製度	Protein G purified
ポリ/モノ	モノクローナル
アイソタイプ	IgG2b
軽鎖の種類	kappa

アプリケーション

Our [Abpromise guarantee](#) covers the use of **ab57114** in the following tested applications.

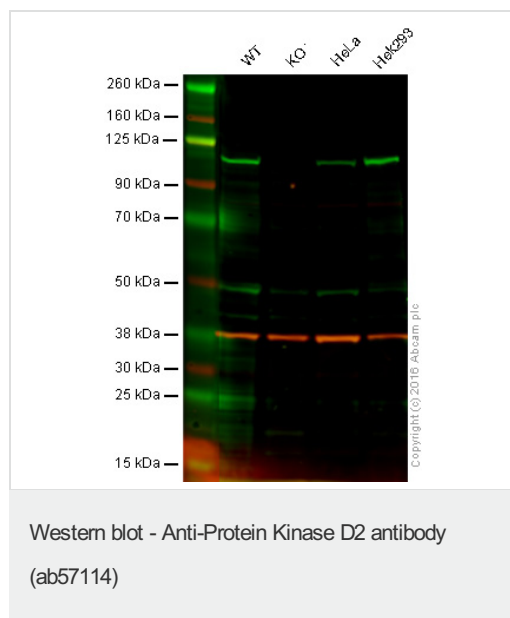
The application notes include recommended starting dilutions; optimal dilutions/concentrations should be determined by the end user.

アプリケーション	Abreviews	特記事項
WB		Use a concentration of 1 - 5 µg/ml. Predicted molecular weight: 97 kDa.
IHC-P	★★★★☆	Use a concentration of 1 µg/ml.

ターゲット情報

機能	Converts transient diacylglycerol (DAG) signals into prolonged physiological effects, downstream of PKC. Involved in resistance to oxidative stress.
組織特異性	Widely expressed.
配列類似性	Belongs to the protein kinase superfamily, CAMK Ser/Thr protein kinase family, PKD subfamily. Contains 1 PH domain. Contains 2 phorbol-ester/DAG-type zinc fingers. Contains 1 protein kinase domain.
翻訳後修飾	Phosphorylation of Ser-876 correlates with the activation status of the kinase. Ser-706 is probably phosphorylated by PKC.
細胞内局在	Cytoplasm. Membrane. Translocation to the cell membrane is required for kinase activation.

画像



Lane 1: Wild-type HAP1 cell lysate (20 µg)

Lane 2: Protein Kinase D2 knockout HAP1 cell lysate (20 µg)

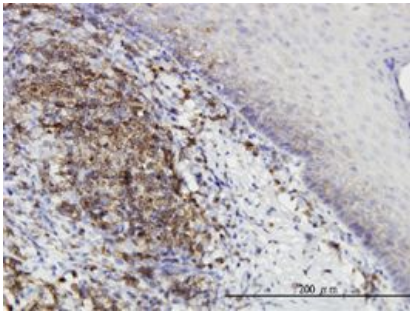
Lane 3: HeLa cell lysate (20 µg)

Lane 4: HEK293 cell lysate (20 µg)

Lanes 1 - 4: Merged signal (red and green).

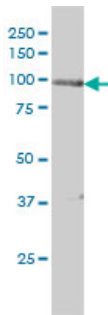
Green - ab57114 observed at 110 kDa. Red - loading control, [ab181602](#), observed at 37 kDa.

[ab181602](#) was shown to recognize Protein Kinase D2 when Protein Kinase D2 knockout samples were used, along with additional cross-reactive bands. Wild-type and Protein Kinase D2 knockout samples were subjected to SDS-PAGE. [ab57144](#) and [ab181602](#) (loading control to GAPDH) were diluted 1 µg/mL and 1/10000 respectively and incubated overnight at 4°C. Blots were developed with Goat anti-Mouse IgG H&L (IRDye® 800CW) preadsorbed [ab216772](#) and Goat Anti-Rabbit IgG H&L (IRDye® 680RD) preadsorbed [ab216777](#) secondary antibodies at 1/10000 dilution for 1 hour at room temperature before imaging.



IHC-P - Protein Kinase D2 antibody (ab57114)

Protein Kinase D2 antibody (ab57114) used in immunohistochemistry at 1ug/ml on formalin fixed and paraffin embedded human tonsil.



Western blot - Protein Kinase D2 antibody (ab57114)

Protein Kinase D2 antibody (ab57114) at 1ug/lane + HeLa cell lysate at 25ug/lane.

Please note: All products are "FOR RESEARCH USE ONLY AND ARE NOT INTENDED FOR DIAGNOSTIC OR THERAPEUTIC USE"

Our Abpromise to you: Quality guaranteed and expert technical support

- Replacement or refund for products not performing as stated on the datasheet
- Valid for 12 months from date of delivery
- Response to your inquiry within 24 hours
- We provide support in Chinese, English, French, German, Japanese and Spanish
- Extensive multi-media technical resources to help you
- We investigate all quality concerns to ensure our products perform to the highest standards

If the product does not perform as described on this datasheet, we will offer a refund or replacement. For full details of the Abpromise, please visit <http://www.abcam.co.jp/abpromise> or contact our technical team.

Terms and conditions

- Guarantee only valid for products bought direct from Abcam or one of our authorized distributors