

Product datasheet

Anti-TIMM9 antibody ab57089

1 References [画像数 2](#)

製品の概要

製品名	Anti-TIMM9 antibody
製品の詳細	Mouse monoclonal to TIMM9
由来種	Mouse
アプリケーション	適用あり: WB, IHC-P
種交差性	交差種: Human
免疫原	Recombinant full length protein: MAAQIPESDQ IKQFKEFLGT YNKLTETCFL DCVKDFTTRE VKPEETTCSE HCLQKYLKMT QRISMRFQEY HIQQNEALAA KAGLLGQPR, corresponding to amino acids 1-90 of Human TIMM9 Run BLAST with ExPASy Run BLAST with NCBI

特記事項

Abcam is committed to meeting high standards of ethical manufacturing and as such, we will be discontinuing this product, which has been generated by the ascites method, within the next year. We are sorry for any inconvenience this may cause. If you would like help finding an alternative product, please do not hesitate to contact our scientific support team.

製品の特性

製品の状態	Liquid
保存方法	Shipped at 4°C. Upon delivery aliquot and store at -20°C or -80°C. Avoid repeated freeze / thaw cycles.
バッファー	Preservative: None PBS, pH 7.2
精製度	Protein G purified
ポリ/モノ	モノクローナル
アイソタイプ	IgG2a
軽鎖の種類	kappa

アプリケーション

Our [Abpromise guarantee](#) covers the use of **ab57089** in the following tested applications.

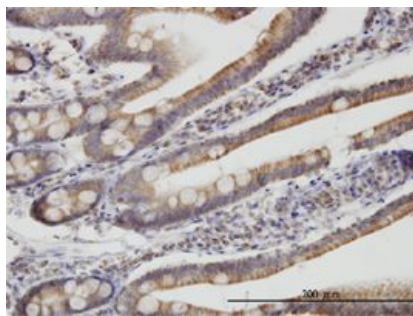
The application notes include recommended starting dilutions; optimal dilutions/concentrations should be determined by the end user.

アプリケーション	Abreviews	特記事項
WB		Use a concentration of 1 - 5 µg/ml. Predicted molecular weight: 10 kDa.
IHC-P		Use a concentration of 3 µg/ml.

ターゲット情報

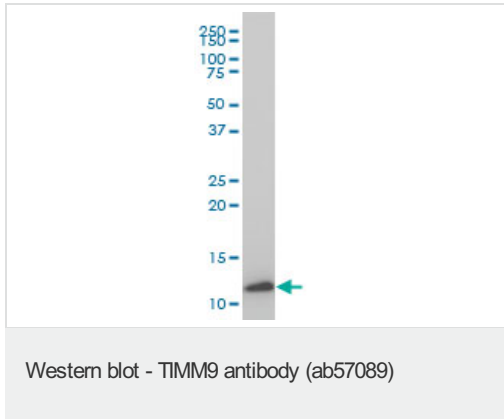
機能	Mitochondrial intermembrane chaperone that participates in the import and insertion of multi-pass transmembrane proteins into the mitochondrial inner membrane. May also be required for the transfer of beta-barrel precursors from the TOM complex to the sorting and assembly machinery (SAM complex) of the outer membrane. Acts as a chaperone-like protein that protects the hydrophobic precursors from aggregation and guide them through the mitochondrial intermembrane space.
組織特異性	Ubiquitous, with highest expression in heart, kidney, liver and skeletal muscle.
配列類似性	Belongs to the small Tim family.
ドメイン	The twin CX3C motif contains 4 conserved Cys residues that form 2 disulfide bonds in the mitochondrial intermembrane space. However, during the transit of TIMM9 from cytoplasm into mitochondrion, the Cys residues probably coordinate zinc, thereby preventing folding and allowing its transfer across mitochondrial outer membrane.
細胞内局在	Mitochondrion inner membrane.

画像



IHC-P - TIMM9 antibody (ab57089)

TIMM9 antibody (ab57089) used in immunohistochemistry at 3µg/ml on formalin fixed and paraffin embedded human small Intestine.



TIMM9 antibody (ab57089) at 1ug/lane + IMR-32 cell lysate at 25ug/lane.

Please note: All products are "FOR RESEARCH USE ONLY AND ARE NOT INTENDED FOR DIAGNOSTIC OR THERAPEUTIC USE"

Our Abpromise to you: Quality guaranteed and expert technical support

- Replacement or refund for products not performing as stated on the datasheet
- Valid for 12 months from date of delivery
- Response to your inquiry within 24 hours
- We provide support in Chinese, English, French, German, Japanese and Spanish
- Extensive multi-media technical resources to help you
- We investigate all quality concerns to ensure our products perform to the highest standards

If the product does not perform as described on this datasheet, we will offer a refund or replacement. For full details of the Abpromise, please visit <http://www.abcam.co.jp/abpromise> or contact our technical team.

Terms and conditions

- Guarantee only valid for products bought direct from Abcam or one of our authorized distributors