

Product datasheet

Anti-Pumilio 2 antibody ab57049

画像数 1

製品の概要

製品名	Anti-Pumilio 2 antibody
製品の詳細	Mouse monoclonal to Pumilio 2
アプリケーション	適用あり: WB
種交差性	交差種: Human
免疫原	Recombinant fragment: DIMPSGRSRL LEDFRNNRFP NLQLRDLIGH IVEFSQDQHG SRFIQQKLER ATPAERQMVF NEILQAAYQL MTDVFGNYVI QKFFFEFGSLD QKLALATR, corresponding to amino acids 701-799 of Human Pumilio 2 Run BLAST with ExPASy Run BLAST with NCBI

製品の特性

製品の状態	Liquid
保存方法	Shipped at 4°C. Upon delivery aliquot and store at -20°C or -80°C. Avoid repeated freeze / thaw cycles.
バッファー	Preservative: None PBS, pH 7.2
精製度	Protein G purified
ポリモノ	モノクローナル
アイソタイプ	IgG1
軽鎖の種類	kappa

アプリケーション

Our [Abpromise guarantee](#) covers the use of **ab57049** in the following tested applications.

The application notes include recommended starting dilutions; optimal dilutions/concentrations should be determined by the end user.

アプリケーション	Abreviews	特記事項
----------	-----------	------

WB

追加情報

WB: Use at a concentration of 1-5 µg/ml.

This antibody has only been tested in WB against the recombinant fragment used as immunogen. We have no data on the detection of endogenous protein.

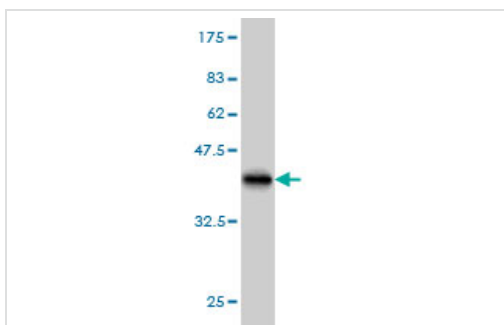
Not yet tested in other applications.

Optimal dilutions/concentrations should be determined by the end user.

ターゲット情報

機能	Sequence-specific RNA-binding protein that regulates translation and mRNA stability by binding the 3'-UTR of mRNA targets. Its interactions and tissue specificity suggest that it may be required to support proliferation and self-renewal of stem cells by regulating the translation of key transcripts.
組織特異性	Expressed in male germ cells of adult testis (at protein level). Highly expressed in testis and ovary. Predominantly expressed in stem cells and germ cells. Expressed at lower level in brain, heart, kidney, liver, muscle, placenta, intestine and stomach Expressed in cerebellum, corpus callosum, caudate nucleus, hippocampus, medulla oblongata and putamen. Expressed in all fetal tissues tested.
配列類似性	Contains 1 PUM-HD domain. Contains 8 pumilio repeats.
ドメイン	The pumilio repeats mediate the association with RNA by packing together to form a right-handed superhelix that approximates a half doughnut. The number as well as the specific sequence of the repeats determine the specificity for target mRNAs.
細胞内局在	Cytoplasm. Cytoplasmic granule. Cytoplasm > perinuclear region. The cytoplasmic granules are stress granules which are a dense aggregation in the cytosol composed of proteins and RNAs that appear when the cell is under stress. Colocalizes with NANOS3 in the stress granules (By similarity). Colocalizes with NANOS1 and SNAPIN in the perinuclear region of germ cells.

画像



Western blot - Pumilio 2 antibody (ab57049)

Western blot against tagged recombinant protein immunogen using ab57049 Pumilio 2 antibody at 1ug/ml. Predicted band size of immunogen is 37 kDa

Please note: All products are "FOR RESEARCH USE ONLY AND ARE NOT INTENDED FOR DIAGNOSTIC OR THERAPEUTIC USE"

Our Abpromise to you: Quality guaranteed and expert technical support

- Replacement or refund for products not performing as stated on the datasheet
- Valid for 12 months from date of delivery

- Response to your inquiry within 24 hours
- We provide support in Chinese, English, French, German, Japanese and Spanish
- Extensive multi-media technical resources to help you
- We investigate all quality concerns to ensure our products perform to the highest standards

If the product does not perform as described on this datasheet, we will offer a refund or replacement. For full details of the Abpromise, please visit <http://www.abcam.co.jp/abpromise> or contact our technical team.

Terms and conditions

- Guarantee only valid for products bought direct from Abcam or one of our authorized distributors