

## Product datasheet

# Anti-RASSF8 antibody ab56921

1 References [画像数 2](#)

### 製品の概要

製品名	Anti-RASSF8 antibody
製品の詳細	Mouse monoclonal to RASSF8
アプリケーション	<b>適用あり:</b> WB, IHC-P
種交差性	<b>交差種:</b> Human
免疫原	Recombinant fragment: YTLIEKWRDT ERHLAPHENP IISLNKWGQY ASDVQLILRR TGPSLSERPT SDSVARIPER TLYRQSLPPL AKLRPQIDKS IKRREPKRKS LTFTGGAK, corresponding to amino acids 40-138 of Human RASSF8 <a href="#">Run BLAST with ExPASy</a> <a href="#">Run BLAST with NCBI</a>

### 製品の特性

製品の状態	Liquid
保存方法	Shipped at 4°C. Upon delivery aliquot and store at -20°C or -80°C. Avoid repeated freeze / thaw cycles.
バッファー	Preservative: None PBS, pH 7.2
精製度	Protein G purified
ポリモノ	モノクローナル
アイソタイプ	IgG2a
軽鎖の種類	kappa

### アプリケーション

Our [Abpromise guarantee](#) covers the use of **ab56921** in the following tested applications.

The application notes include recommended starting dilutions; optimal dilutions/concentrations should be determined by the end user.

アプリケーション	Abreviews	特記事項
WB		
IHC-P		

## 追加情報

WB: Use at a concentration of 1-5 µg/ml.

IHC-P: Use at a concentration of 3 µg/ml.

Not yet tested in other applications.

Optimal dilutions/concentrations should be determined by the end user.

## ターゲット情報

### 組織特異性

Widely expressed as a 6.2 kb transcript. A 2.2 kb alternatively spliced transcript is expressed exclusively in testis.

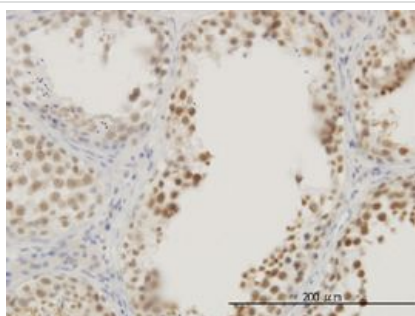
### 関連疾患

Note=A chromosomal aberration involving RASSF8 is found in a complex type of synpolydactyly referred to as 3/3-prime/4 synpolydactyly associated with metacarpal and metatarsal synostoses. Reciprocal translocation t(12;22)(p11.2;q13.3) with C12orf2.

### 配列類似性

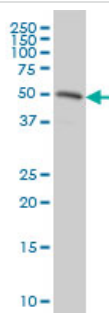
Contains 1 Ras-associating domain.

## 画像



IHC-P - RASSF8 antibody (ab56921)

RASSF8 antibody (ab56921) used in immunohistochemistry at 3µg/ml on formalin fixed and paraffin embedded human testis.



Western blot - RASSF8 antibody (ab56921)

**Predicted band size : 48 kDa**

RASSF8 antibody (ab56921) at 1µg/lane + HeLa cell lysate at 25µg/lane.

**Please note:** All products are "FOR RESEARCH USE ONLY AND ARE NOT INTENDED FOR DIAGNOSTIC OR THERAPEUTIC USE"

## Our Abpromise to you: Quality guaranteed and expert technical support

- Replacement or refund for products not performing as stated on the datasheet

- Valid for 12 months from date of delivery
- Response to your inquiry within 24 hours
  
- We provide support in Chinese, English, French, German, Japanese and Spanish
- Extensive multi-media technical resources to help you
- We investigate all quality concerns to ensure our products perform to the highest standards

If the product does not perform as described on this datasheet, we will offer a refund or replacement. For full details of the Abpromise, please visit <http://www.abcam.co.jp/abpromise> or contact our technical team.

### **Terms and conditions**

---

- Guarantee only valid for products bought direct from Abcam or one of our authorized distributors