

Product datasheet

Anti-SAM68 antibody ab56836

★★★★☆ 1 Abreviews [画像数 4](#)

製品の概要

製品名	Anti-SAM68 antibody
製品の詳細	Mouse monoclonal to SAM68
由来種	Mouse
アプリケーション	適用あり: WB, IHC-P, Flow Cyt, ICC/IF
種交差性	交差種: Human
免疫原	Recombinant fragment: ILGPQGNTIK RLQEETGAKI SVLGKGSMDR KAKEEELRKG GDPKYAHLNM DLHVFIEVFG PPCEAYALMA HAMEEVKFL VPDMMDDICQ EQFLELSYLN , corresponding to amino acids 176-275 of Human SAM68 Run BLAST with ExPASy Run BLAST with NCBI
ポジティブ・コントロール	This antibody gave a positive result when used in the following methanol fixed cell lines: Malm-3M

製品の特性

製品の状態	Liquid
保存方法	Shipped at 4°C. Upon delivery aliquot and store at -20°C or -80°C. Avoid repeated freeze / thaw cycles.
バッファー	Preservative: None PBS, pH 7.2
精製度	Protein G purified
ポリ/モノ	モノクローナル
アイソタイプ	IgG2a
軽鎖の種類	kappa

アプリケーション

Our [Abpromise guarantee](#) covers the use of **ab56836** in the following tested applications.

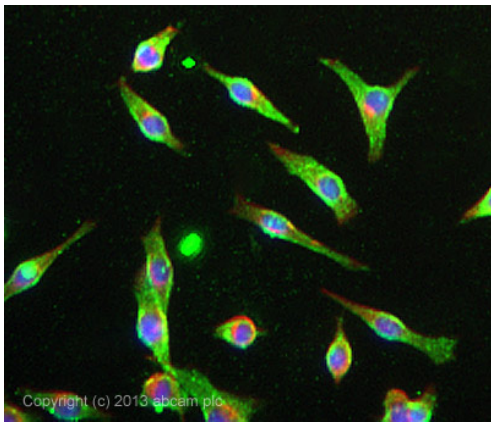
The application notes include recommended starting dilutions; optimal dilutions/concentrations should be determined by the end user.

アプリケーション	Abreviews	特記事項
WB		Use a concentration of 1 - 5 µg/ml. Predicted molecular weight: 48 kDa.
IHC-P		Use a concentration of 3 µg/ml.
Flow Cyt		Use 0.1-1µg for 10 ⁶ cells. ab170191 -Mouse monoclonal IgG2a, is suitable for use as an isotype control with this antibody.
ICC/IF	★★★★☆	Use a concentration of 1 µg/ml.

ターゲット情報

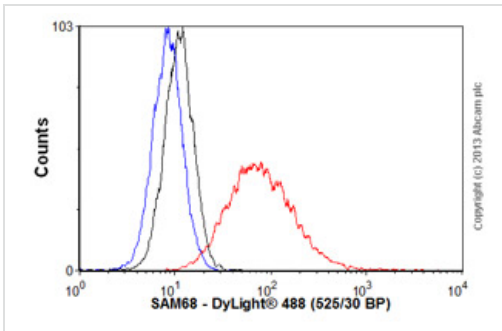
機能	<p>Recruited and tyrosine phosphorylated by several receptor systems, for example the T-cell, leptin and insulin receptors. Once phosphorylated, functions as an adapter protein in signal transduction cascades by binding to SH2 and SH3 domain-containing proteins. Role in G2-M progression in the cell cycle. Represses CBP-dependent transcriptional activation apparently by competing with other nuclear factors for binding to CBP. Also acts as a putative regulator of mRNA stability and/or translation rates and mediates mRNA nuclear export.</p> <p>Isoform 3, which is expressed in growth-arrested cells only, inhibits S phase.</p>
組織特異性	Ubiquitously expressed in all tissue examined. Isoform 1 is expressed at lower levels in brain, skeletal muscle, and liver whereas isoform 3 is intensified in skeletal muscle and in liver.
配列類似性	<p>Belongs to the KHDRBS family.</p> <p>Contains 1 KH domain.</p>
発生段階	Isoform 3 is only expressed in growth-arrested cells.
ドメイン	<p>The KH domain is required for binding to RNA.</p> <p>The Pro-rich domains are flanked by Arg/Gly-rich motifs which can be asymmetric dimethylated on arginine residues to give the DMA/Gly-rich regions. Selective methylation on these motifs can modulate protein-protein interactions.</p>
翻訳後修飾	<p>Tyrosine phosphorylated by several non-receptor tyrosine kinases, for example LCK, FYN and JAK3. Negatively correlates with ability to bind RNA but required for many interactions with proteins.</p> <p>Acetylated. Positively correlates with ability to bind RNA.</p> <p>Arginine methylation is required for nuclear localization. Also can affect interaction with other proteins. Inhibits interaction with Src-like SH3 domains, but not interaction with WW domains of WBP4/FBP21 AND FNBP4/FBP30.</p> <p>Arg-291, Arg-331 and Arg-346 are found to be also dimethylated, probably to asymmetric dimethylarginine.</p>
細胞内局在	Nucleus. Membrane.

画像



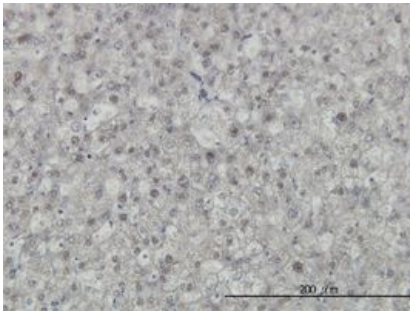
Immunocytochemistry/ Immunofluorescence - Anti-SAM68 antibody (ab56836)

ab56836 stained Malme-3M cells. The cells were 100% methanol fixed (5 min) and then incubated in 1%BSA / 10% normal goat serum / 0.3M glycine in 0.1% PBS-Tween for 1h to permeabilise the cells and block non-specific protein-protein interactions. The cells were then incubated with the antibody ab56836 at 1µg/ml overnight at +4°C. The secondary antibody (green) was DyLight® 488 goat anti- mouse (ab96879) IgG (H+L) used at a 1/250 dilution for 1h. Alexa Fluor® 594 WGA was used to label plasma membranes (red) at a 1/200 dilution for 1h. DAPI was used to stain the cell nuclei (blue) at a concentration of 1.43µM.



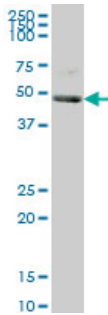
Flow Cytometry - Anti-SAM68 antibody (ab56836)

Overlay histogram showing HeLa cells stained with ab56836 (red line). The cells were fixed with 4% paraformaldehyde (10 min) and then permeabilized with 0.1% PBS-Tween for 20 min. The cells were then incubated in 1x PBS / 10% normal goat serum / 0.3M glycine to block non-specific protein-protein interactions followed by the antibody (ab56836, 0.1µg/1x10⁶ cells) for 30 min at 22°C. The secondary antibody used was DyLight® 488 goat anti-mouse IgG (H+L) (ab96879) at 1/500 dilution for 30 min at 22°C. Isotype control antibody (black line) was mouse IgG2a [ICIGG2A] (ab91361, 1µg/1x10⁶ cells) used under the same conditions. Unlabelled sample (blue line) was also used as a control. Acquisition of >5,000 events were collected using a 20mW Argon ion laser (488nm) and 525/30 bandpass filter. This antibody gave a positive signal in HeLa cells fixed with 80% methanol (5 min)/permeabilized with 0.1% PBS-Tween for 20 min used under the same conditions.



IHC-P - SAM68 antibody (ab56836)

SAM68 antibody (ab56836) used in immunohistochemistry at 3ug/ml on formalin fixed and paraffin embedded human liver.



Western blot - SAM68 antibody (ab56836)

SAM68 antibody (ab56836) at 1ug/lane + A-431 cell lysate at 25ug/lane.

Please note: All products are "FOR RESEARCH USE ONLY AND ARE NOT INTENDED FOR DIAGNOSTIC OR THERAPEUTIC USE"

Our Abpromise to you: Quality guaranteed and expert technical support

- Replacement or refund for products not performing as stated on the datasheet
- Valid for 12 months from date of delivery
- Response to your inquiry within 24 hours
- We provide support in Chinese, English, French, German, Japanese and Spanish
- Extensive multi-media technical resources to help you
- We investigate all quality concerns to ensure our products perform to the highest standards

If the product does not perform as described on this datasheet, we will offer a refund or replacement. For full details of the Abpromise, please visit <http://www.abcam.co.jp/abpromise> or contact our technical team.

Terms and conditions

- Guarantee only valid for products bought direct from Abcam or one of our authorized distributors